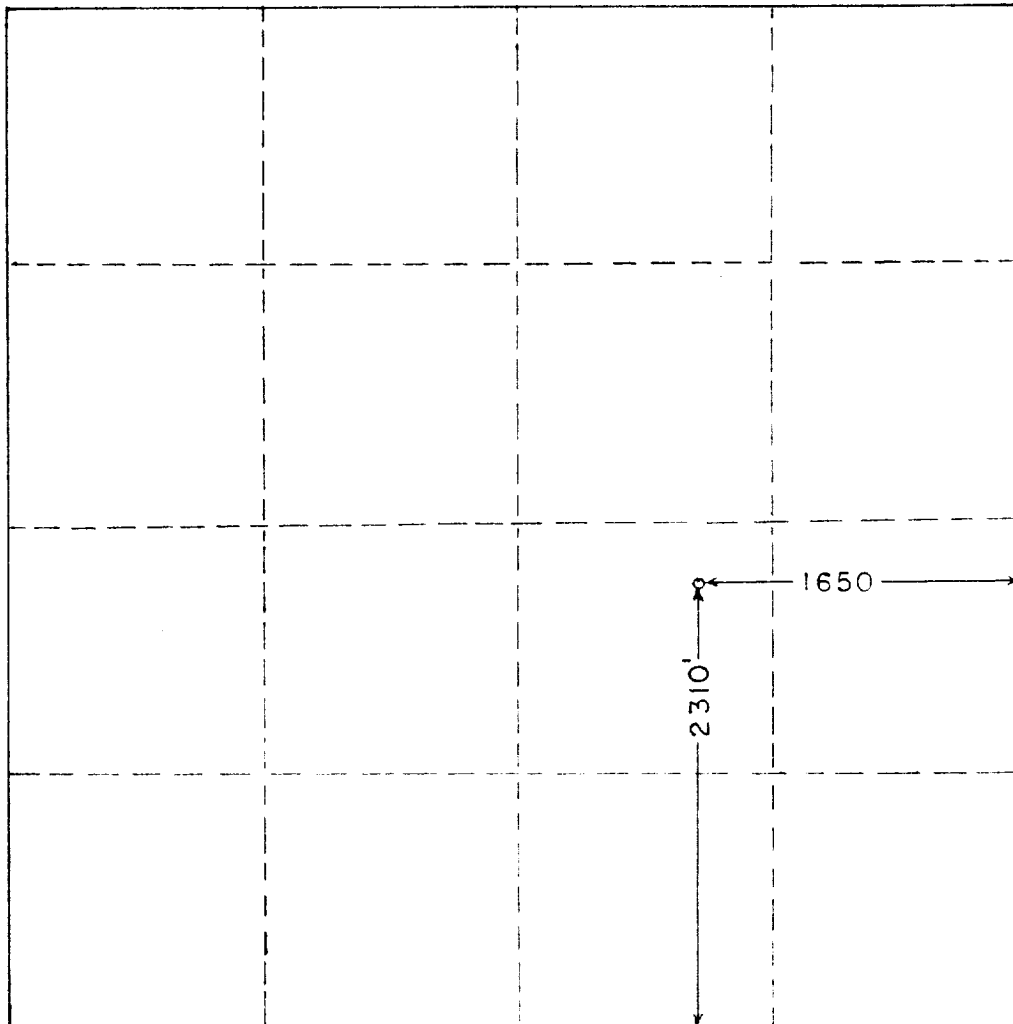


WELL LOCATION SURVEY PLAT

OPERATOR H. S. MOSS
LEASE STATE "B"
WELL NO. 1



SEC. 28, TWP. 13 S., RGE. 33 E., N.M.P.M.

I HEREBY CERTIFY THAT THIS PLAT WAS MADE
FROM NOTES TAKEN IN THE FIELD BY ME AND
THAT THE SAME IS TRUE AND CORRECT TO
THE BEST OF MY KNOWLEDGE AND BELIEF.

John W. West

JOHN W. WEST, PE & LS NO. 676

OCT. 5, 1953