

Submit to Appropriate
District Office
State Lease - 6 copies
Fee Lease - 5 copies

State of New Mexico
Energy, Minerals and Natural Resources Department

Form C-101
Revised 1-1-89

OIL CONSERVATION DIVISION

DISTRICT I
P.O. Box 1980, Hobbs, NM 88240

DISTRICT II
P.O. Drawer DD, Artesia, NM 88210

DISTRICT III
1000 Rio Brazos Rd., Aztec, NM 87410

P.O. Box 2088
Santa Fe, New Mexico 87504-2088

API NO. (assigned by OCD on New Wells)

30-025-01097

5. Indicate Type of Lease

STATE ☒

FEE ☐

6. State Oil & Gas Lease No.

V-3834

APPLICATION FOR PERMIT TO DRILL, DEEPEN, OR PLUG BACK

1a. Type of Work:

DRILL ☐

RE-ENTER ☒

DEEPEN ☒

PLUG BACK ☐

b. Type of Well:

OIL
WELL ☒

GAS
WELL ☐

OTHER ☐

SINGLE
ZONE ☐

MULTIPLE
ZONE ☐

7. Lease Name or Unit Agreement Name

Sapphire ALE State

2. Name of Operator

YATES PETROLEUM CORPORATION

8. Well No.

1

3. Address of Operator

105 South 4th St., Artesia, NM 88210

9. Pool name or Wildcat

Lazy J Penn

4. Well Location

Unit Letter I : 1980 Feet From The South Line and 660 Feet From The East Line

Section 33

Township 13S

Range 33E

NMPM

Lea

County

10. Proposed Depth

10100'

11. Formation

Bough A,B,C,D,E

12. Rotary or C.T.

Workover Rig

13. Elevations (Show whether DF, RT, GR, etc.)

4248' GR

14. Kind & Status Plug. Bond

Blanket

15. Drilling Contractor

-

16. Approx. Date Work will start

When approved

17.

PROPOSED CASING AND CEMENT PROGRAM

SIZE OF HOLE	SIZE OF CASING	WEIGHT PER FOOT	SETTING DEPTH	SACKS OF CEMENT	EST. TOP
17 1/2"	13-3/8"	27.3#, 36#, 48#	389' (in place)	350 sx	Circ
11"	8-5/8"	24#, 32#	4085' (in place)	1175 sx	Circ
7-7/8"	5-1/2"	14#, 15.5#, 17#	9739'	1150 sx	

TD 9739'. Propose to re-enter well and deepen to 10100', approximately 300'. Will squeeze perforations 9680-9726' by setting cement retainer with cement 50-75' above perms 9680-9726'. RIH with workover rig, deepen and clean out well to 10100'. Will evaluate for perforating Bough zones. If commercial, will run liner +9500' to +10100', and cement. Will submit list of perforations and treatment after evaluation.

IN ABOVE SPACE DESCRIBE PROPOSED PROGRAM: IF PROPOSAL IS TO DEEPEN OR PLUG BACK, GIVE DATA ON PRESENT PRODUCTIVE ZONE AND PROPOSED NEW PRODUCTIVE ZONE. GIVE BLOWOUT PREVENTER PROGRAM, IF ANY.

I hereby certify that the information above is true and complete to the best of my knowledge and belief.

SIGNATURE

TITLE

Production Supervisor

DATE 6-25-92

TYPE OR PRINT NAME

Juanita Goodlett

TELEPHONE NO. 505/748-1471

(This space for State Use)

APPROVED BY

TITLE

DATE

CONDITIONS OF APPROVAL, IF ANY:

Submit to Appropriate
District Office
State Lease - 4 copies
Fee Lease - 3 copies

State of New Mexico
Energy, Minerals and Natural Resources Department

Form C-102
Revised 1-1-89

OIL CONSERVATION DIVISION

P.O. Box 2088
Santa Fe, New Mexico 87504-2088

DISTRICT I
P.O. Box 1980, Hobbs, NM 88240

DISTRICT II
P.O. Drawer DD, Artesia, NM 88210

DISTRICT III
1000 Rio Brazos Rd., Aztec, NM 87410

WELL LOCATION AND ACREAGE DEDICATION PLAT
All Distances must be from the outer boundaries of the section

Operator YATES PETROLEUM CORPORATION			Lease Sapphire ALE State		Well No. 1
Unit Letter I	Section 33	Township 13-S	Range 33-E	NMPM	County Lea
Actual Footage Location of Well: 1980 feet from the South line and 660 feet from the East line					
Ground level Elev. 4248'	Producing Formation Bough A,B,C,D,E		Pool Lazy J Penn		Dedicated Acreage: 40 Acres

1. Outline the acreage dedicated to the subject well by colored pencil or hatchure marks on the plat below.

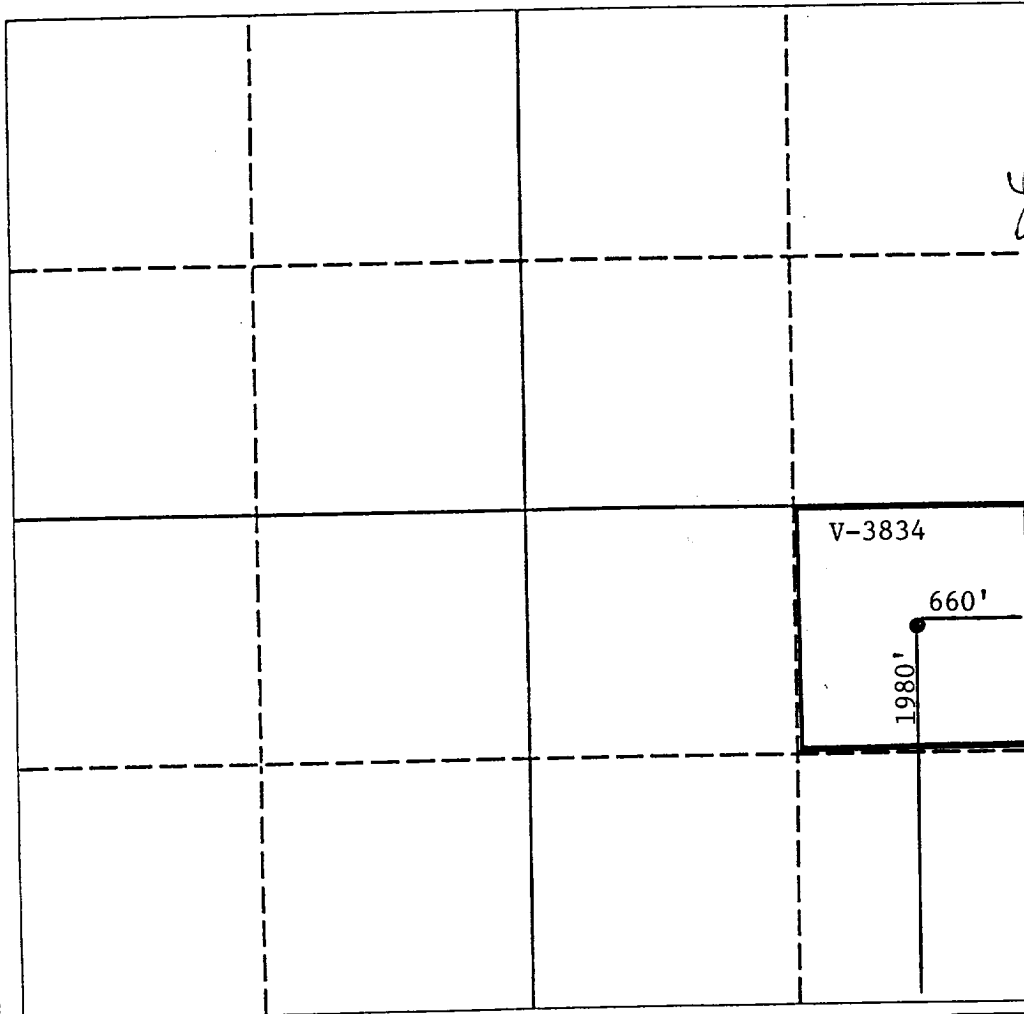
2. If more than one lease is dedicated to the well, outline each and identify the ownership thereof (both as to working interest and royalty).

3. If more than one lease of different ownership is dedicated to the well, have the interest of all owners been consolidated by communitization, unitization, force-pooling, etc.?

☐ Yes ☐ No If answer is "yes" type of consolidation _____

If answer is "no" list the owners and tract descriptions which have actually been consolidated. (Use reverse side of this form if necessary.) _____

No allowable will be assigned to the well until all interests have been consolidated (by communitization, unitization, forced-pooling, or otherwise) or until a non-standard unit, eliminating such interest, has been approved by the Division.



OPERATOR CERTIFICATION

I hereby certify that the information contained herein is true and complete to the best of my knowledge and belief.

Signature

Printed Name

JUANITA GOODLETT

Position

PRODUCTION SUPERVISOR

Company

YATES PETROLEUM CORPORATION

Date

6-25-92

SURVEYOR CERTIFICATION

I hereby certify that the well location shown on this plat was plotted from field notes of actual surveys made by me or under my supervision, and that the same is true and correct to the best of my knowledge and belief.

Date Surveyed

REFER TO ORIGINAL PLAT

Signature & Seal of
Professional Surveyor

Certificate No.