

OIL CONSERVATION DIVISION

STATE OF NEW MEXICO
ENERGY AND MINERALS DEPARTMENTP. O. BOX 2088
SANTA FE, NEW MEXICO 87501Form C-102
Revised 10-1-78

All distances must be from the outer boundaries of the Section.

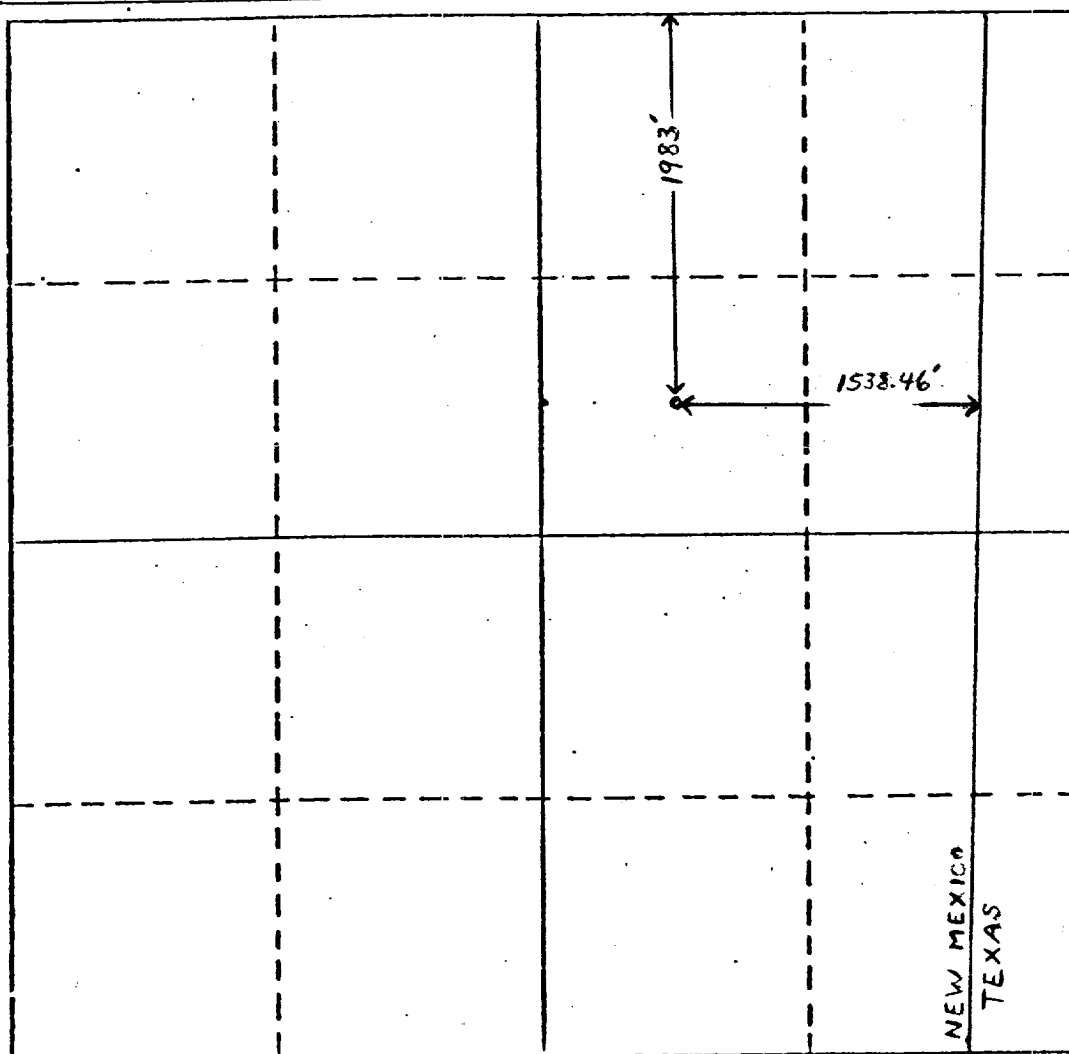
Operator Amerada Hess Corporation			Lease Federal "B"		Well No. 1
Unit Letter G	Section 11	Township 13S	Range 38E	County Lea	
Actual Footage Location of Well: 1983 feet from the North line and 1538.46 feet from the East line					
Ground Level Elev. 3798	Producing Formation Wolfcamp		Pool Bronco - Wolfcamp		Dedicated Acreage: 40 Acres

1. Outline the acreage dedicated to the subject well by colored pencil or hatchure marks on the plat below.
2. If more than one lease is dedicated to the well, outline each and identify the ownership thereof (both as to working interest and royalty).
3. If more than one lease of different ownership is dedicated to the well, have the interests of all owners been consolidated by communitization, unitization, force-pooling, etc?

☐ Yes ☐ No If answer is "yes," type of consolidation _____

If answer is "no," list the owners and tract descriptions which have actually been consolidated. (Use reverse side of this form if necessary.) _____

No allowable will be assigned to the well until all interests have been consolidated (by communitization, unitization, forced-pooling, or otherwise) or until a non-standard unit, eliminating such interests, has been approved by the Division.



CERTIFICATION

I hereby certify that the information contained herein is true and complete to the best of my knowledge and belief.

Name R. C. Wheeler, Jr.
Position Supv. Adm. Svc.
Company Amerada Hess Corporation
Date 6-17-87

I hereby certify that the well location shown on this plat was plotted from field notes of actual surveys made by me or under my supervision, and that the same is true and correct to the best of my knowledge and belief.

Date Surveyed _____
Registered Professional Engineer
and/or Land Surveyor _____

Certificate No. _____

RECEIVED
JUN 18 1987
OCD
HOBBS OFFICE