

NO. OF COPIES RECEIVED		
DISTRIBUTION		
SANTA FE		
FILE		
U.S.G.S.		
LAND OFFICE		
OPERATOR		

NEW MEXICO OIL CONSERVATION COMMISSION

Form C-101
Revised 1-1-65

1A. Indicate Type of Lease	
STATE <input type="checkbox"/>	FEE <input checked="" type="checkbox"/>

5. State Oil & Gas Lease No.

APPLICATION FOR PERMIT TO DRILL, DEEPEN, OR PLUG BACK

1a. Type of Work		7. Unit Agreement Name	
b. Type of Well DRILL <input type="checkbox"/> DEEPEN <input checked="" type="checkbox"/> PLUG BACK <input type="checkbox"/> OIL WELL <input checked="" type="checkbox"/> GAS WELL <input type="checkbox"/> OTHER <input type="checkbox"/> SINGLE ZONE <input checked="" type="checkbox"/> MULTIPLE ZONE <input type="checkbox"/>		8. Farm or Lease Name L. W. Ward	
2. Name of Operator Amerada Hess Corporation - Att'n: Drilling Services		9. Well No. 4	
3. Address of Operator Box 2040 - Tulsa, Oklahoma 74102		10. Field and Pool, or Wildcat	
4. Location of Well UNIT LETTER P LOCATED 990 FEET FROM THE South LINE AND 400 FEET FROM THE East LINE OF SEC. 11 TWP. 13S RGL. 38E NHEM		17. County Lea	
19. Proposed Depth 11,800' +/-		19A. Formation Silurio Devonian	20. Rotary or C.T. Rotary
21. Elevations (Show whether DF, RT, etc.) 3809' DF	21A. Kind & Status Plug. Bond	21B. Drilling Contractor Cactus Drilling Company	22. Approx. Date Work will start 12/1/77

23.

PROPOSED CASING AND CEMENT PROGRAM

SIZE OF HOLE	SIZE OF CASING	WEIGHT PER FOOT	SETTING DEPTH	SACKS OF CEMENT	EST. TOP
Already in hole.	7"	23-26-29	9645		
6"	5" Liner	15#	11800	150	

This is a re-entry of well #4 drilled as a Wolfcamp in 1954. Well has been T.A.

Well has a C.I. bridge plug set at 9150 and 9600'. Perfs. above the top bridge plug are from 9032' to 9092' and below the bridge plug at 9522 to 9586. Below the bottom bridge plug are open perfs from 9607' to 9625'.

Plans are to fish the cement bailer on top bridge plug at 9150', squeeze perfs. from 9032' to 9092', drill out and test. Drill out bridge plug at 9150. Squeeze perfs. from 9522' to 9586' test and drill out bridge plug at 9600'. Squeeze perfs. from 9607' to 9625', clean up hole, lay down tbg., and proceed to drill from 9645' to 11,800' +/- to Devonian Zone, run liner and complete as a Devonian oil well.

BLOWOUT EQUIPMENT CONSISTS OF:

10" Cameron Type "F" Series 900, Dbl.Hyd. w/Payne closing unit, Gas separator and Degasser complete with auto. choke. This equip. will be checked periodically by Cactus driller and All

IN ABOVE SPACE DESCRIBE PROPOSED PROGRAM: IF PROPOSAL IS TO DEEPEN OR PLUG BACK, GIVE DATA ON PRESENT PRODUCTIVE ZONE AND PROPOSED NEW PRODUCTIVE ZONE. GIVE BLOWOUT PREVENTER PROGRAM, IF ANY.

I hereby certify that the information above is true and complete to the best of my knowledge and belief.

Signed H.O. Porter H.O. Porter Title Supv. Drilling Admin. Services Date November 17, 1977

(This space for State Use)

APPROVED BY Jerry Sartin TITLE SUPV. DRILLING DATE 11/17/77

CONDITIONS OF APPROVAL, IF ANY:

RECEIVED

21 1977

OIL CONSERVATION COMM.
HOBBS, N. M.

NEW MEXICO OIL CONSERVATION COMMISSION
WELL LOCATION AND ACREAGE DEDICATION AT

Form C-102
Supersedes C-128
Effective 1-1-65

All distances must be from the outer boundaries of the Section.

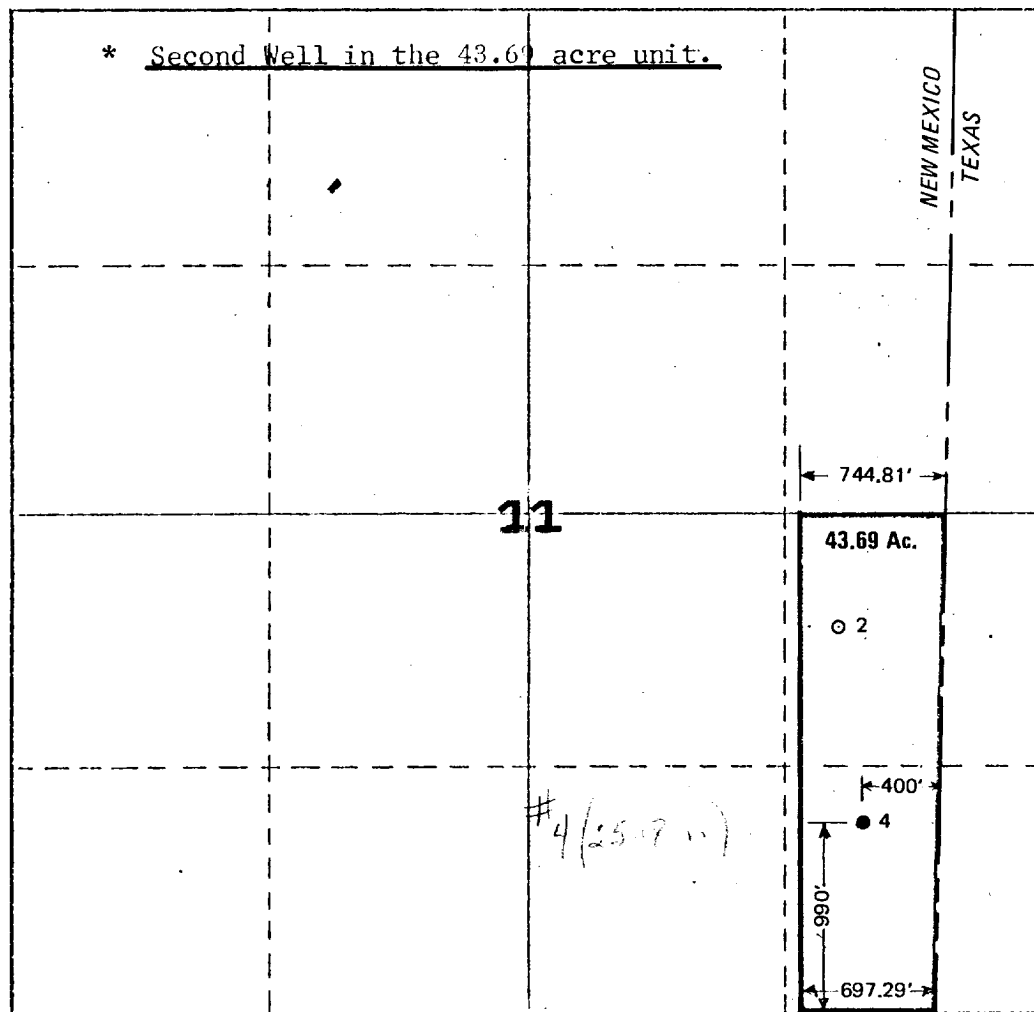
Operator Amerada Hess Corporation			Lease L. W. Ward		Well No. 4
Unit Letter P	Section 11	Township 13S	Range 38E	County Lea	
Actual Footage Location of Well: 990 feet from the South line and 400 feet from the East line					
Ground Level Elev. 3809 DF	Producing Formation Silurio Devonian		Pool Bronco Siluro Devonian		Dedicated Acreage: 40* Acres

1. Outline the acreage dedicated to the subject well by colored pencil or hachure marks on the plat below.
2. If more than one lease is dedicated to the well, outline each and identify the ownership thereof (both as to working interest and royalty).
3. If more than one lease of different ownership is dedicated to the well, have the interests of all owners been consolidated by communitization, unitization, force-pooling, etc?

☐ Yes ☐ No If answer is "yes," type of consolidation _____

If answer is "no," list the owners and tract descriptions which have actually been consolidated. (Use reverse side of this form if necessary.) _____

No allowable will be assigned to the well until all interests have been consolidated (by communitization, unitization, forced-pooling, or otherwise) or until a non-standard unit, eliminating such interests, has been approved by the Commission.



CERTIFICATION

I hereby certify that the information contained herein is true and complete to the best of my knowledge and belief.

Name
H.O. Porter H.O. Porter

Position
Supv. Drlg. Admin. Services

Company
Amerada Hess Corporation

Date
November 17, 1977

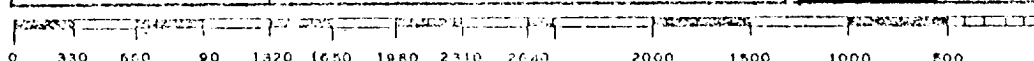
I hereby certify that the well location shown on this plat was plotted from field notes of actual surveys made by me or under my supervision, and that the same is true and correct to the best of my knowledge and belief.

Date Surveyed
October 23/1954

Registered Professional Engineer and/or Land Surveyor

John West Engr.

Certificate No.
LS676



RECEIVED

21 1977

OIL CONSERVATION COMM.
HOBBS, N. M.