

NUMBER OF COPIES RECEIVED	
DISTRIBUTION	
SANTA FE	
FILE	
U.S.G.S.	
LAND OFFICE	
TRANSPORTER	OIL GAS
PRODUCTION OFFICE	
OPERATOR	

**NEW MEXICO OIL CONSERVATION COMMISSION**  
**Santa Fe, New Mexico**

Form C-101  
Revised (12/1/55)

HOBBS OFFICE D. C. C.

**NOTICE OF INTENTION TO DRILL**

MAY 27 10 25 AM '64

Notice must be given to the District Office of the Oil Conservation Commission and approval obtained before drilling or recompletion begins. If changes in the proposed plan are considered advisable, a copy of this notice showing such changes will be returned to the sender. Submit this notice in **QUINTUPLICATE**. One copy will be returned following approval. See additional instructions in Rules and Regulations of the Commission. If State Land submit 6 Copies Attach Form C-128 in triplicate to first 3 copies of form C-101

Roswell, New Mexico

MAY 26 1964

(Place)

(Date)

**OIL CONSERVATION COMMISSION**  
**SANTA FE, NEW MEXICO**

Gentlemen:

You are hereby notified that it is our intention to commence the Drilling of a well to be known as  
Shell Oil Company

(Company or Operator)

Levick State

(Lease)

Well No. 1, in I The well is

(Unit)

located 1980 feet from the south line and 660 feet from the east line of Section 20, T. 8S, R. 33E, NMPM.

(GIVE LOCATION FROM SECTION LINE) Tobac Pennsylvanian Pool, Chaves County

**R-33-E**

D	C	B	A
E	F	G	H
L	K	J	X
M	N	O	P

**Section 20**

If State Land the Oil and Gas Lease is No. B-8638

If patented land the owner is -

Address -

We propose to drill well with drilling equipment as follows: Rotary Tools

The status of plugging bond is Blanket

Drilling Contractor undetermined

We intend to complete this well in the Pennsylvanian formation at an approximate depth of 9150 feet.

**CASING PROGRAM**

We propose to use the following strings of Casing and to cement them as indicated:

Size of Hole	Size of Casing	Weight per Foot	New or Second Hand	Depth	Sacks Cement
15"	10 3/4"	32.75#	New	380'	300
9 5/8"	7 5/8"	24#	New	3650'	300
6 3/4"	4 1/2"	9.5# & 11.6#	New	9150'	300

If changes in the above plans become advisable we will notify you immediately.

**ADDITIONAL INFORMATION** (If recompletion give full details of proposed plan of work.)

MAY 27 1964

Approved \_\_\_\_\_, 19\_\_\_\_\_  
Except as follows:

Sincerely yours,

Shell Oil Company

(Company or Operator)

By Original Signed By R. A. Lowery

Position District Exploitation Engineer

Send Communications regarding well to

Name Shell Oil Company

Address P. O. Box 1858, Roswell, New Mexico 8820

**OIL CONSERVATION COMMISSION**

By Engineer District 1

NEW MEXICO OIL CONSERVATION COMMISSION  
WELL LOCATION AND ACREAGE DEDICATION PLAT

FORM C-128  
Revised 5/1/57  
HOBBS OFFICE O. C. C.  
MAY 27 10 25 AM '64

SEE INSTRUCTIONS FOR COMPLETING THIS FORM ON THE REVERSE SIDE

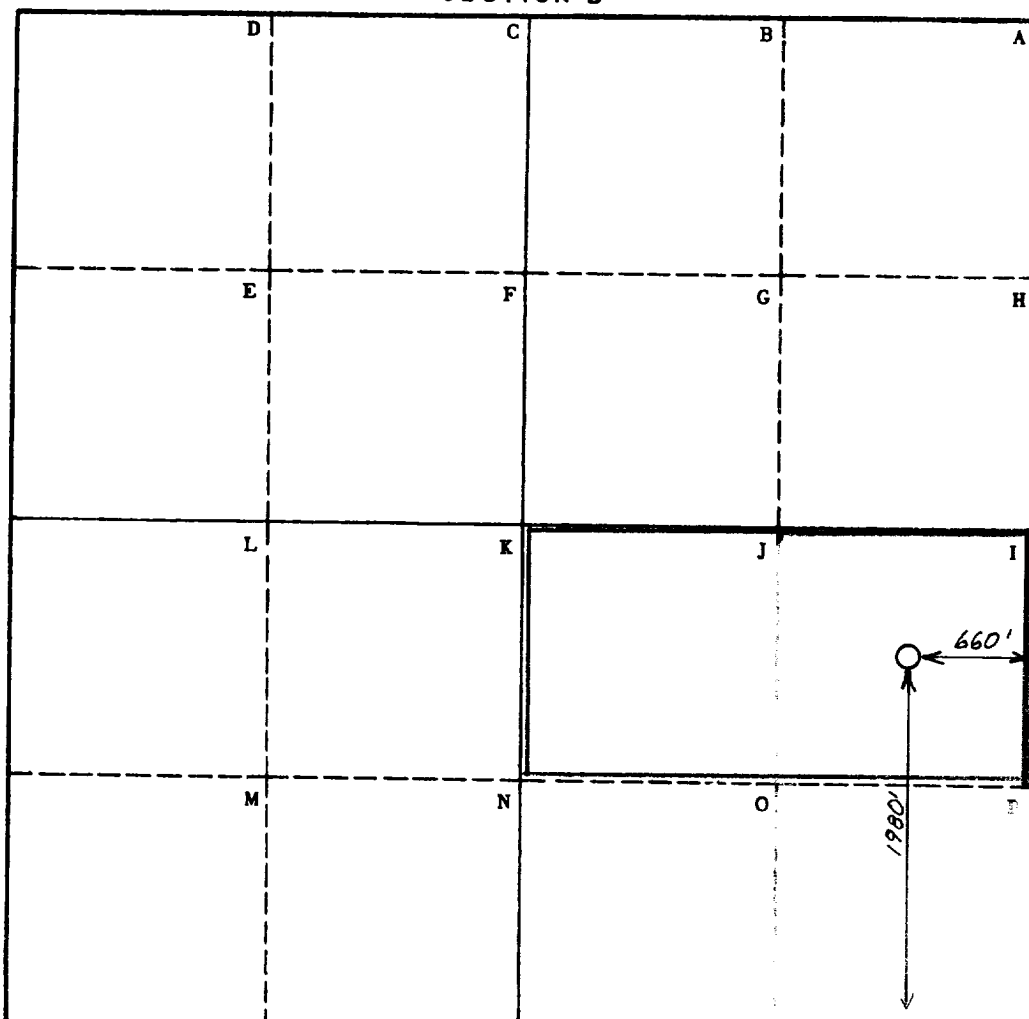
SECTION A

Operator Shell Oil Company		Lease Levick State		Well No. 1	
Unit Letter I	Section 20	Township 8S	Range 33E	County Chaves	
Actual Footage Location of Well: 1980 feet from the south line and 660 feet from the east line					
Ground Level Elev. not available	Producing Formation Pennsylvanian		Pool Tobac Pennsylvanian	Dedicated Acreage: 80 Acres	

1. Is the Operator the only owner in the dedicated acreage outlined on the plat below? YES ☒ NO \_\_\_\_ . ("Owner" means the person who has the right to drill into and to produce from any pool and to appropriate the production either for himself or for himself and another. (65-3-29 (e) NMSA 1935 Comp.)
2. If the answer to question one is "no," have the interests of all the owners been consolidated by communitization agreement or otherwise? YES \_\_\_\_ NO \_\_\_\_ . If answer is "yes," Type of Consolidation \_\_\_\_
3. If the answer to question two is "no," list all the owners and their respective interests below:

Owner	Land Description

SECTION B



CERTIFICATION

I hereby certify that the information in SECTION A above is true and complete to the best of my knowledge and belief.

Original Signed By

Name  
R. A. Lowery

Position  
District Exploitation Engineer

Company  
Shell Oil Company

Date  
MAY 26 1964

I hereby certify that the well location shown on the plat in SECTION B was plotted from field notes of actual surveys made by me or under my supervision, and that the same is true and correct to the best of my knowledge and belief.

Date Surveyed

April 23, 1964  
T. J. Chapman, Jr., Chief Surveyor

Shell Oil Company

T. J. Chapman, Jr.

0 330 660 990 1320 1650 1980 2310 2640 2000 1500 1000 500 0