

NUMBER OF COPIES RECEIVED	
DISTRIBUTION	
SANTA FE	
FILE	
U.S.G.S.	
LAND OFFICE	
TRANSPORTER	OIL
	GAS
PRODUCTION OFFICE	
OPERATOR	

NEW MEXICO OIL CONSERVATION COMMISSION  
Santa Fe, New Mexico

Form C-101  
Revised (12/1/55)  
HOBBBS OFFICE O. C. C.  
DEC 13 9 42 AM '63

## NOTICE OF INTENTION TO DRILL

Notice must be given to the District Office of the Oil Conservation Commission and approval obtained before drilling or recompletion begins. If changes in the proposed plan are considered advisable, a copy of this notice showing such changes will be returned to the sender. Submit this notice in QUINTUPLICATE. One copy will be returned following approval. See additional instructions in Rules and Regulations of the Commission. If State Land submit 6 Copies Attach Form C-128 in triplicate to first 3 copies of form C-101

Hobbs, New Mexico  
(Place)

December 12, 1963  
(Date)

OIL CONSERVATION COMMISSION  
SANTA FE, NEW MEXICO

Gentlemen:

You are hereby notified that it is our intention to commence the Drilling of a well to be known as

**AMERADA PETROLEUM CORPORATION**

(Company or Operator)

State SH "B"  
(Lease)

Well No. 1, in K (Unit) The well is

located 1980' feet from the South line and 1980' feet from the West line of Section 5, T. 13S, R. 33E, NMPM.

(GIVE LOCATION FROM SECTION LINE) Wildcat - NW Lasy "J" Area Pool, Lea County

R-33E

If State Land the Oil and Gas Lease is No. R-8150

If patented land the owner is

Address

We propose to drill well with drilling equipment as follows: Rotary Equipment

The status of plugging bond is Blanket

Drilling Contractor Cactus Drilling Co.

Box 1826

Hobbs, New Mexico

We intend to complete this well in the Pennsylvanian

formation at an approximate depth of 9800 feet.

### CASING PROGRAM

We propose to use the following strings of Casing and to cement them as indicated:

Size of Hole	Size of Casing	Weight per Foot	New or Second Hand	Depth	Sacks Cement
17-1/2"	13-3/8"	48#	New	350'	350
11"	8-5/8"	24 & 32#	New	4000'	1500
7-7/8"	5-1/2" Liner	15.5 & 17#	New	9800'	600

If changes in the above plans become advisable we will notify you immediately.

ADDITIONAL INFORMATION (If recompletion give full details of proposed plan of work.)

Approved \_\_\_\_\_, 19\_\_\_\_  
Except as follows:

Sincerely yours,

**AMERADA PETROLEUM CORPORATION**  
(Company or Operator)

By \_\_\_\_\_

Position District Superintendent

Send Communications regarding well to

Name Amerada Petroleum Corporation

Address Box 668 - Hobbs, New Mexico

OIL CONSERVATION COMMISSION

By \_\_\_\_\_

NEW MEXICO OIL CONSERVATION COMMISSION  
WELL LOCATION AND ACREAGE DEDICATION PLAT

SEE INSTRUCTIONS FOR COMPLETING THIS FORM ON THE REVERSE SIDE

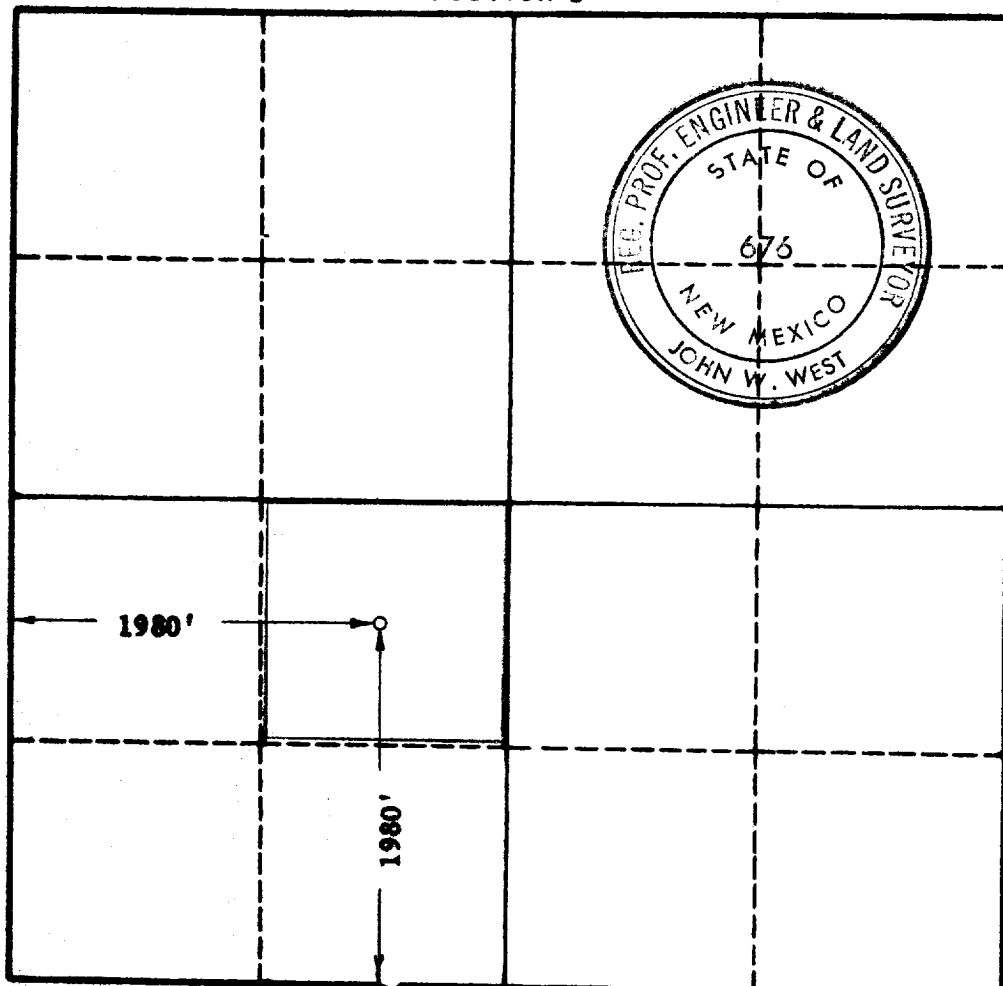
SECTION A

Operator <b>AMERADA PETROLEUM CORP.</b>			Lease <b>STATE SHB</b>		Well No. <b>1</b>
Unit Letter <b>K</b>	Section <b>5</b>	Township <b>13 SOUTH</b>	Range <b>33 EAST</b>	County <b>LEA</b>	
Actual Footage Location of Well: <b>1980</b> feet from the <b>SOUTH</b> line and <b>1980</b> feet from the <b>WEST</b> line					
Ground Level Elev.	Producing Formation <b>Pennsylvanian</b>		Pool <b>Wildcat - NW 1/4 "J" Area</b>		Dedicated Acreage: <b>40</b> Acres

1. Is the Operator the only owner in the dedicated acreage outlined on the plat below? YES ☒ NO \_\_\_\_ . ("Owner" means the person who has the right to drill into and to produce from any pool and to appropriate the production either for himself or for himself and another. (65-3-29 (e) NMSA 1955 Comp.)
2. If the answer to question one is "no," have the interests of all the owners been consolidated by communitization agreement or otherwise? YES \_\_\_\_ NO \_\_\_\_ . If answer is "yes," Type of Consolidation \_\_\_\_
3. If the answer to question two is "no," list all the owners and their respective interests below:

Owner	Land Description

SECTION B



CERTIFICATION

I hereby certify that the information in SECTION A above is true and complete to the best of my knowledge and belief.

Name	<i>D. C. C. J. J. L.</i>
Position	<b>District Superintendent</b>
Company	<b>Ameraga Pet. Corp.</b>
Date	<b>December 9, 1963</b>

I hereby certify that the well location shown on the plat in SECTION B was plotted from field notes of actual surveys made by me or under my supervision, and that the same is true and correct to the best of my knowledge and belief.

Date Surveyed	<b>DEC. 7, 1963</b>
Registered Professional Engineer and/or Land Surveyor, <b>JOHN W. WEST</b>	
<i>John W. West</i>	
Certificate No.	<b>N. M. - P. E. &amp; L. S. NO. 676</b>

0 330 660 990 1320 1650 1980 2310 2640 2970 3300 3630 3960 4290 4620 4950 5280 5610 5940 6270 6600