

District I  
PO Box 1980, Hobbs, NM 88241-1980

District II  
811 South First, Artesia, NM 88210

District III  
1000 Rio Brazos Rd., Aztec, NM 87410

District IV  
2040 South Pacheco, Santa Fe, NM 87505

State of New Mexico  
Energy, Minerals & Natural Resources Department

OIL CONSERVATION DIVISION  
2040 South Pacheco  
Santa Fe, NM 87505

Form C-101  
Revised October 18, 1994  
Instructions on back  
Submit to Appropriate District Office  
State Lease - 6 Copies  
Fee Lease - 5 Copies

☐ AMENDED REPORT

APPLICATION FOR PERMIT TO DRILL, RE-ENTER, DEEPEN, PLUGBACK, OR ADD A ZONE

<sup>1</sup> Operator Name and Address MARBOB ENERGY CORPORATION P.O. BOX 227 ARTESIA NM 88210		<sup>2</sup> OGRID Number 14049
		<sup>3</sup> API Number 30 - 025-20479
<sup>4</sup> Property Code 27769	<sup>5</sup> Property Name UNOCAL 9 STATE	<sup>6</sup> Well No. 1

<sup>7</sup>Surface Location

UL or lot no.	Section	Township	Range	Lot Idn	Feet from the	North/South line	Feet from the	East/West Line	County
E	9	14S	35E		1980	NORTH	660	WEST	LEA

<sup>8</sup>Proposed Bottom Hole Location If Different From Surface

UL or lot no.	Section	Township	Range	Lot Idn	Feet from the	North/South line	Feet from the	East/West Line	County
<sup>9</sup> Proposed Pool 1 WILDCAT; MORROW					<sup>10</sup> Proposed Pool 2				

<sup>11</sup> Work Type Code E	<sup>12</sup> Well Type Code G	<sup>13</sup> Cable/Rotary R	<sup>14</sup> Lease Type Code S	<sup>15</sup> Ground Level Elevation 4043
<sup>16</sup> Multiple No	<sup>17</sup> Proposed Depth 13600	<sup>18</sup> Formation MORROW	<sup>19</sup> Contractor UNKNOWN	<sup>20</sup> Spud Date 04-01-01

<sup>21</sup>Proposed Casing and Cement Program

Hole Size	Casing Size	Casing weight/foot	Setting Depth	Sacks of Cement	Estimated TOC
17 1/2"	13 3/8"	48#, H-40	506'	650 SX	SURF
12 1/4"	9 5/8"	36# & 40#, J-55	4551'	100 SX	TIE-IN
8 3/4"	5 1/2"	17#, N-80 & P110	13,600'	1250 SX	7500'

<sup>22</sup>Describe the proposed program. If this application is to DEEPEN or PLUG BACK give the data on the present productive zone and proposed new productive zone. Describe the blowout prevention program, if any. Use additional sheets if necessary.

WE PROPOSE TO DRILL OUT PLUGS TO 9 5/8", STUB @ 1208', TIE BACK 9 5/8" TO SURF, CONT TO DRILL OUT PLUGS IN ORIGINAL WELL BORE, CLEAN OUT TO 13,600', RUN OPEN HOLE LOGS & RUN 5 1/2" CSG TO 13,600', IF LOGS LOOK GOOD, WILL TEST MORROW OR ATOKA SANDS FOR GAS POTENTIAL.

Permit Expires 1 Year From Approval  
Date Unless ~~Drilling~~ Underway  
Re-Entry

<sup>23</sup>I hereby certify that the information given above is true and complete to the best of my knowledge and belief.

Signature:

*Robin Cockrum*

Printed name: ROBIN COCKRUM

Title: PRODUCTION ANALYST

Date: 03-19-01

Phone: 748-3303

OIL CONSERVATION DIVISION

Approved By:

Title:

Approval Date: 3/21/2001

Expiration Date:

Conditions of Approval:

Attached: ☐

*mp*

District I  
1625 N. French Dr., Hobbs, NM 88240

District II  
811 South First, Artesia, NM 88210

District III  
1000 Rio Brazos Rd., Aztec, NM 87410

District IV  
1220 S. St. Francis Dr., Santa Fe, NM 87505

State of New Mexico  
Oil, Minerals & Natural Resources Department

Form C-102  
Revised August 15, 2000

OIL CONSERVATION DIVISION  
1220 South St. Francis Dr.  
Santa Fe, NM 87505

Submit to Appropriate District Office  
State Lease - 4 Copies  
Fee Lease - 3 Copies

☐ AMENDED REPORT

WELL LOCATION AND ACREAGE DEDICATION PLAT

<sup>1</sup> API Number 30-025-20479	<sup>2</sup> Pool Code WILDCAT	<sup>3</sup> Pool Name Morrow
<sup>4</sup> Property Code 27769	<sup>5</sup> Property Name UNOCAL 9 STATE	<sup>6</sup> Well Number 1
<sup>7</sup> OGRID No. 14049	<sup>8</sup> Operator Name MARBOB ENERGY CORPORATION	<sup>9</sup> Elevation 4043' GR

<sup>10</sup> Surface Location

UL or lot no.	Section	Township	Range	Lot Idn	Feet from the	North/South line	Feet from the	East/West line	County
E	9	14S	35E		1980	NORTH	660	WEST	LEA

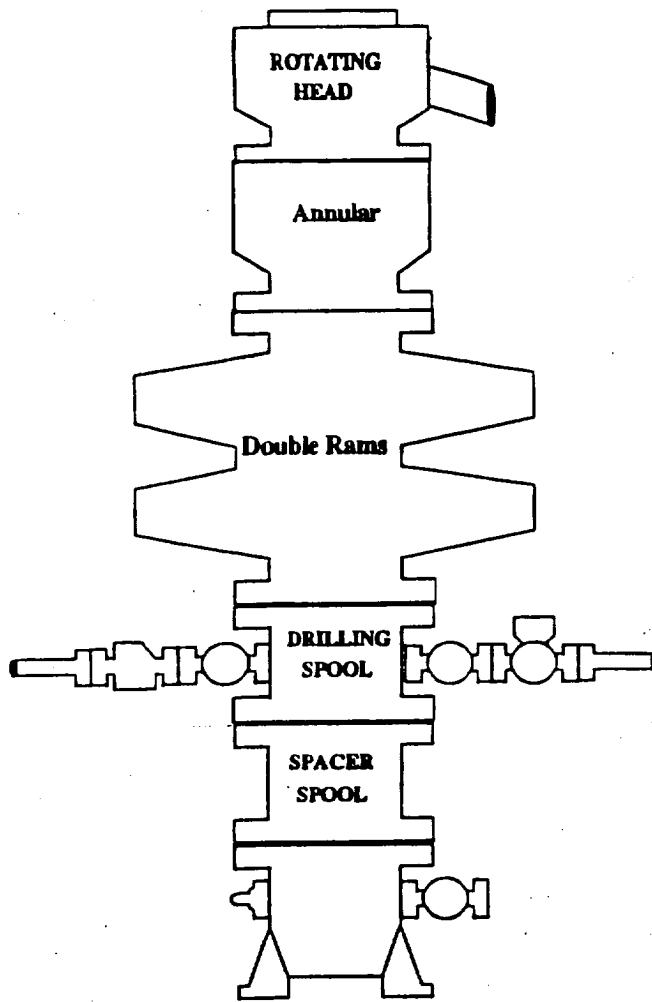
<sup>11</sup> Bottom Hole Location If Different From Surface

UL or lot no.	Section	Township	Range	Lot Idn	Feet from the	North/South line	Feet from the	East/West line	County
<sup>12</sup> Dedicated Acres 320	<sup>13</sup> Joint or Infill	<sup>14</sup> Consolidation Code	<sup>15</sup> Order No.						

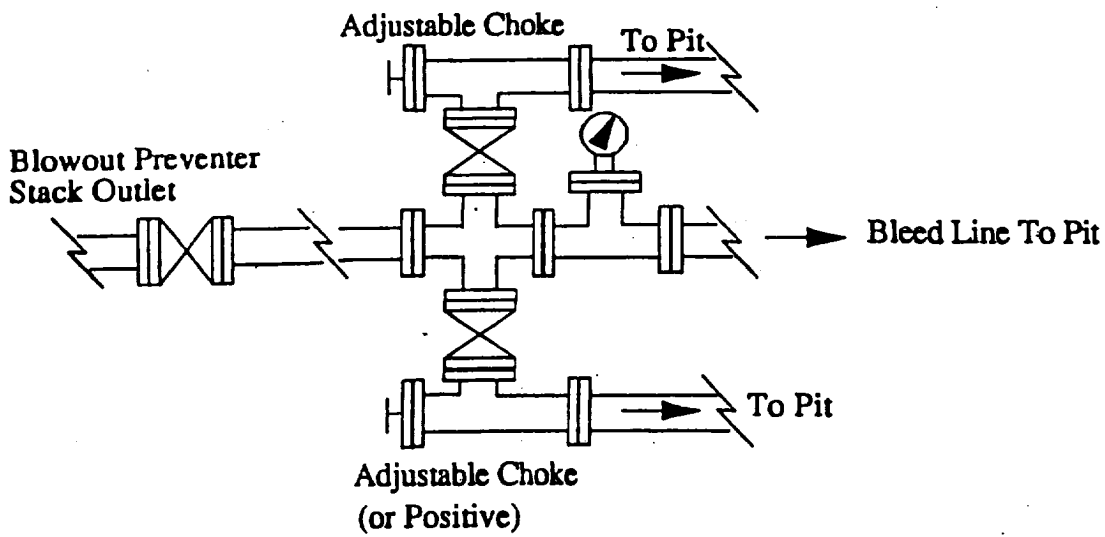
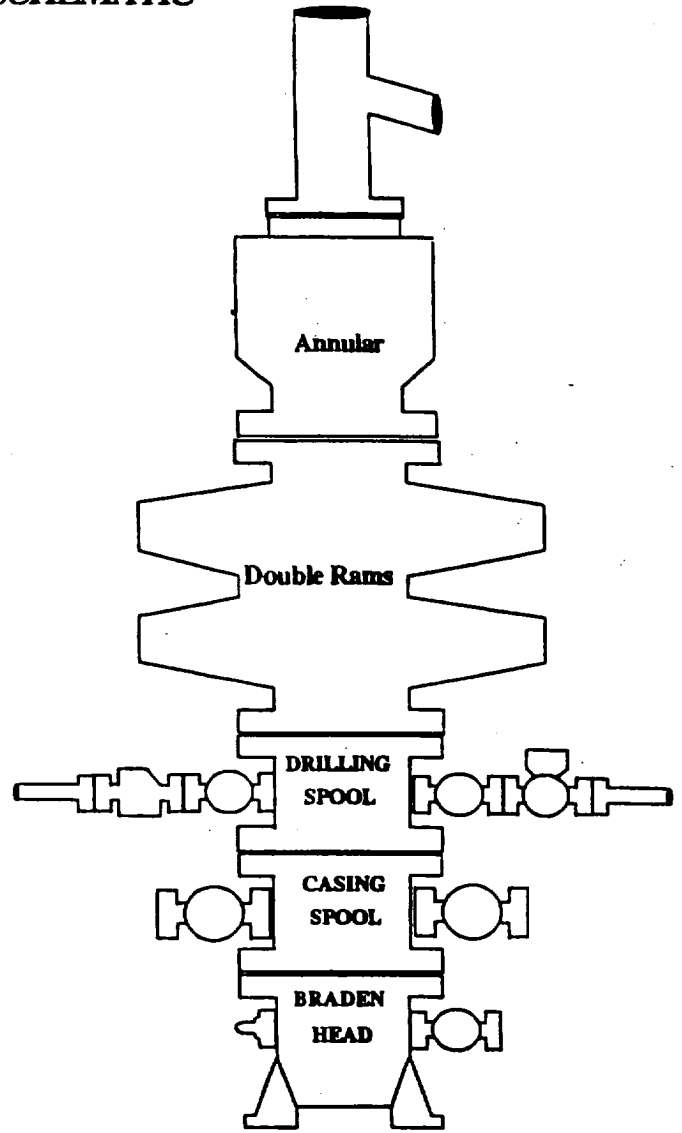
NO ALLOWABLE WILL BE ASSIGNED TO THIS COMPLETION UNTIL ALL INTERESTS HAVE BEEN CONSOLIDATED OR A NON-STANDARD UNIT HAS BEEN APPROVED BY THE DIVISION

<sup>16</sup> <p>1980' FNL</p> <p>660' FWL</p>				<sup>17</sup> OPERATOR CERTIFICATION I hereby certify that the information contained herein is true and complete to the best of my knowledge and belief.  Signature ROBIN COCKRUM Printed Name PRODUCTION ANALYST Title 3/19/01 Date
				<sup>18</sup> SURVEYOR CERTIFICATION I hereby certify that the well location shown on this plat was plotted from field notes of actual surveys made by me or under my supervision, and that the same is true and correct to the best of my belief. Date of Survey Signature and Seal of Professional Surveyor: Certificate Number

# BOPE SCHEMATIC

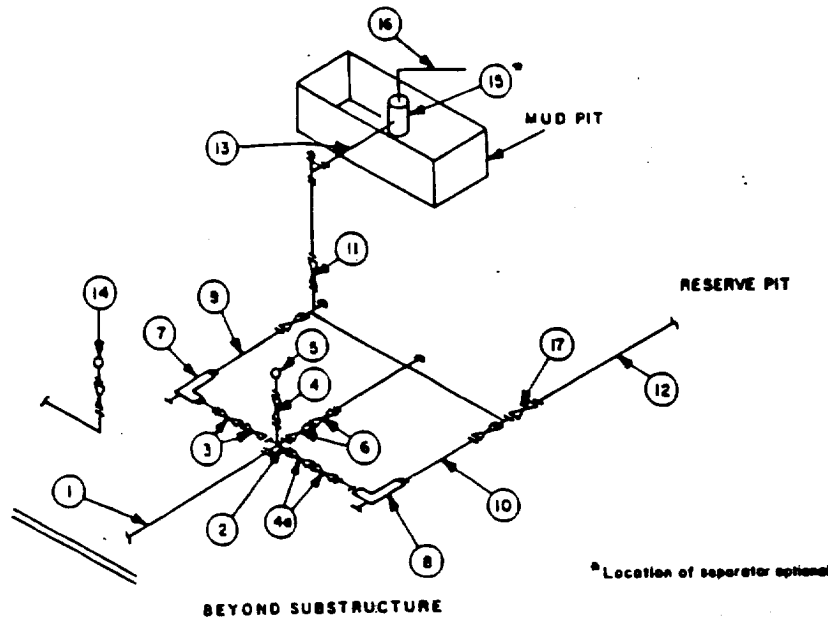


**Choke Manifold**



**MINIMUM CHOKE MANIFOLD**  
3,000, 5,000 and 10,000 PSI Working Pressure

**3 MWP - 5 MWP - 10 MWP**



MINIMUM REQUIREMENTS										
No.		3,000 MWP			5,000 MWP			10,000 MWP		
		I.D.	NOMINAL	RATING	I.D.	NOMINAL	RATING	I.D.	NOMINAL	RATING
1	Line from drilling spool		3"	3,000		3"	5,000		3"	10,000
2	Cross 3"x3"x3"x2"			3,000			5,000			
	Cross 3"x3"x3"x3"									10,000
3	Valves (1) Gate <input type="checkbox"/> Plug <input type="checkbox"/> (2)	3-1/8"		3,000	3-1/8"		5,000	3-1/8"		10,000
4	Valve Gate <input type="checkbox"/> Plug <input type="checkbox"/> (2)	1-13/16"		3,000	1-13/16"		5,000	1-13/16"		10,000
4a	Valves (1)	2-1/16"		3,000	2-1/16"		5,000	3-1/8"		10,000
5	Pressure Gauge			3,000			5,000			10,000
6	Valves Gate <input type="checkbox"/> Plug <input type="checkbox"/> (2)	3-1/8"		3,000	3-1/8"		5,000	3-1/8"		10,000
7	Adjustable Choke (3)	2"		3,000	2"		5,000	2"		10,000
8	Adjustable Choke	1"		3,000	1"		5,000	2"		10,000
9	Line		3"	3,000		3"	5,000		3"	10,000
10	Line		2"	3,000		2"	5,000		3"	10,000
11	Valves Gate <input type="checkbox"/> Plug <input type="checkbox"/> (2)	3-1/8"		3,000	3-1/8"		5,000	3-1/8"		10,000
12	Lines		3"	1,000		3"	1,000		3"	2,000
13	Lines		3"	1,000		3"	1,000		3"	2,000
14	Remote reading compound standpipe pressure gauge			3,000			5,000			10,000
15	Gas Separator		2'x5'			2'x5'			2'x5'	
16	Line		4"	1,000		4"	1,000		4"	2,000
17	Valves Gate <input type="checkbox"/> Plug <input type="checkbox"/> (2)	3-1/8"		3,000	3-1/8"		5,000	3-1/8"		10,000

(1) Only one required in Class 3M.

(2) Gate valves only shall be used for Class 10M.

(3) Remote operated hydraulic choke required on 5,000 psi and 10,000 psi for drilling.

**EQUIPMENT SPECIFICATIONS AND INSTALLATION INSTRUCTIONS**

- All connections in choke manifold shall be welded, studded, flanged or Cameron clamp of comparable rating.
- All flanges shall be API 6B or 6BX and ring gaskets shall be API RX or BX. Use only BX for 10 MWP.
- All lines shall be securely anchored.
- Chokes shall be equipped with tungsten carbide seats and needles, and replacements shall be available.
- Choke manifold pressure and standpipe pressure gauges shall be available at the choke manifold to assist in regulating chokes. As an alternate with automatic chokes, a choke manifold pressure gauge shall be located on the rig floor in conjunction with the standpipe pressure gauge.
- Line from drilling spool to choke manifold should be as straight as possible. Lines downstream from chokes shall make turns by large bends or 90° bends using bull plugged tees.