

NUMBER OF COPIES RECEIVED	
DISTRIBUTION	
SANTA FE	
FILE	
U.S.G.S.	
LAND OFFICE	
TRANSPORTER	OIL
	GAS
PRODUCTION OFFICE	
OPERATOR	

NEW MEXICO OIL CONSERVATION COMMISSION
Santa Fe, New Mexico

Form C-101
Revised (12/1/55)

HOBBS OFFICE O. C. C.

NOTICE OF INTENTION TO DRILL

MAY 4 8 31 AM '64

Notice must be given to the District Office of the Oil Conservation Commission and approval obtained before drilling or recompletion begins. If changes in the proposed plan are considered advisable, a copy of this notice showing such changes will be returned to the sender. Submit this notice in **QUINTUPPLICATE**. One copy will be returned following approval. See additional instructions in Rules and Regulations of the Commission. If State Land submit 6 Copies Attach Form C-128 in triplicate to first 3 copies of form C-101

Hobbs, New Mexico

(Place)

May 4, 1964

(Date)

OIL CONSERVATION COMMISSION
SANTA FE, NEW MEXICO

Gentlemen:

You are hereby notified that it is our intention to commence the Drilling of a well to be known as

AMERADA PETROLEUM CORPORATION

(Company, or Operator)

Karl Cayton

(Lease)

, Well No. **1**, in **6** (Unit) The well is

located **810** feet from the **North** line and **1900** feet from the

West

line of Section **9**, T. **14S**, R. **36E**, NMPM.

(GIVE LOCATION FROM SECTION LINE) **Wildcat - McDonald Area** Pool, **Lea** County

B-36E

If State Land the Oil and Gas Lease is No.

If patented land the owner is **Karl Cayton**

Address **Cayton Bldg., Lamesa, Texas**

We propose to drill well with drilling equipment as follows: **Rotary Equipment**

The status of plugging bond is **Blanket**

Drilling Contractor **McVay Drilling Company**

306 Philtower Bldg.

Tulsa, Oklahoma

We intend to complete this well in the **Strawn**

formation at an approximate depth of **12,000** feet.

CASING PROGRAM

We propose to use the following strings of Casing and to cement them as indicated:

Size of Hole	Size of Casing	Weight per Foot	New or Second Hand	Depth	Sacks Cement
17-1/2"	13-3/8"	42#	New	350'	350
12-1/4"	9-5/8"	36# & 40#	New	4650'	1500
8-3/4"	5-1/2"	17# & 20#	New	12,000'	500

If changes in the above plans become advisable we will notify you immediately.

ADDITIONAL INFORMATION (If recompletion give full details of proposed plan of work.)

Approved _____, 19____
Except as follows:

* Cover Commercial Horizons

OIL CONSERVATION COMMISSION

By *Joe J. Ramsey*

Sincerely yours,

Amerada Petroleum Corporation

(Company or Operator)

By *W. L. Carter*

Position **District Superintendent**

Send Communications regarding well to

Name **Amerada Petroleum Corporation**

Address **Box 668 - Hobbs, New Mexico**

NEW MEXICO OIL CONSERVATION COMMISSION
WELL LOCATION AND ACREAGE DEDICATION PLAT

HUBBS OFFICE O. C. C. FORM C-128
Revised 5/1/57

SEE INSTRUCTIONS FOR COMPLETING THIS FORM ON THE REVERSE SIDE

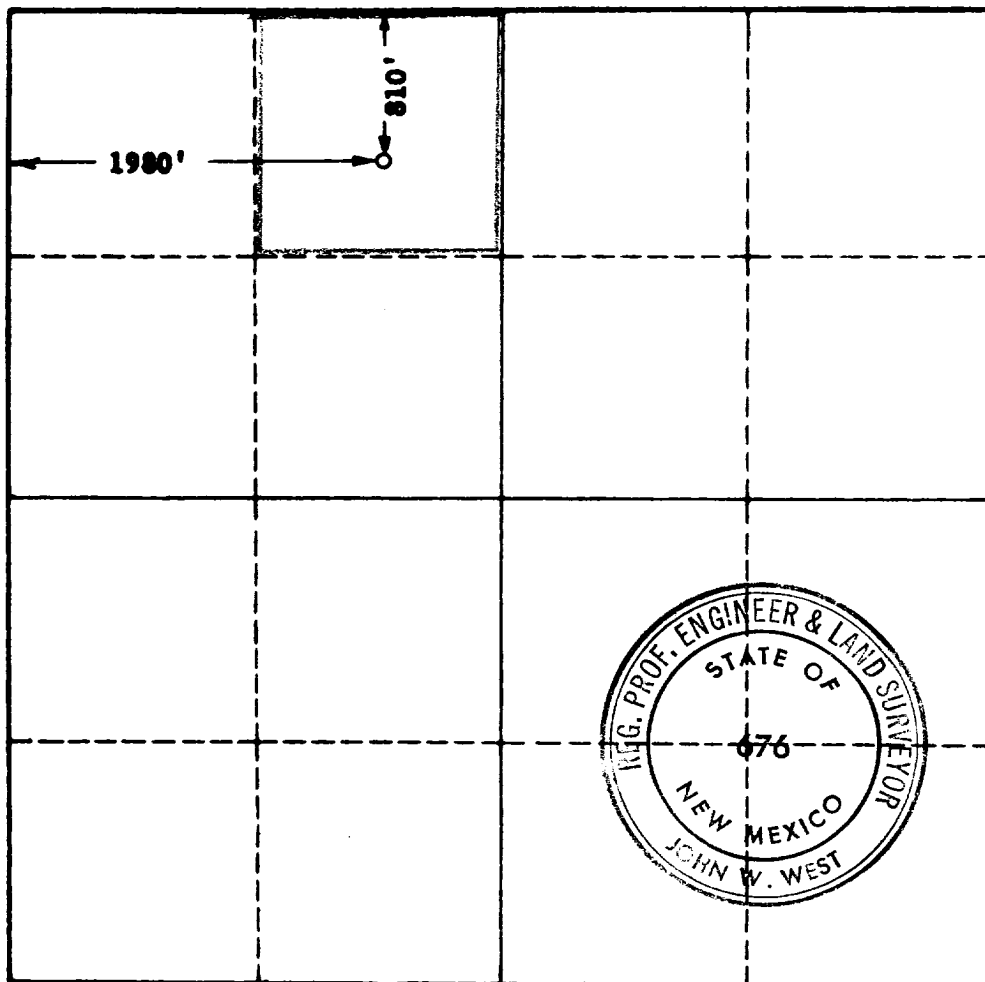
SECTION A

Operator AMERADA PETROLEUM CORP.		Lease KARL CAYTON		Well No. 1
Unit Letter C	Section 9	Township 14 SOUTH	Range 36 EAST	County LEA
Actual Well Location of Well: 810 feet from the NORTH line and 1980 feet from the WEST line				
Ground Level Elev.	Producing Formation Strawn		Pool Wildcat - McDonald Area	Dedicated Acreage: 40 Acres

1. Is the Operator the only owner in the dedicated acreage outlined on the plat below? YES ☒ NO ☐ ("Owner" means the person who has the right to drill into and to produce from any pool and to appropriate the production either for himself or for himself and another. (65-3-29 (e) NMSA 1935 Comp.)
2. If the answer to question one is "no," have the interests of all the owners been consolidated by communization agreement or otherwise? YES ☐ NO ☐ If answer is "yes," Type of Consolidation _____
3. If the answer to question two is "no," list all the owners and their respective interests below:

Owner	Land Description

SECTION B



CERTIFICATION

I hereby certify that the information in SECTION A above is true and complete to the best of my knowledge and belief.

Name W. C. J. J. J.
Position **District Superintendent**
Company **Amerada Petroleum Corp.**
Date **May 1, 1964**

I hereby certify that the well location shown on the plat in SECTION B was plotted from field notes of actual surveys made by me or under my supervision, and that the same is true and correct to the best of my knowledge and belief.

Date Surveyed **APRIL 28, 1964**
Registered Professional Engineer and/or Land Surveyor, **JOHN W. WEST**
Certificate No. John W. West
N. M. - P. E. & L. S. NO. 676

0 330 660 990 1320 1650 1980 2310 2640 2000 1500 1000 500 0

