

NUMBER OF COPIES RECEIVED	
DISTRIBUTION	
SANTA FE	
FILE	
U.S.G.S.	
LAND OFFICE	
TRANSPORTER	OIL
	GAS
PRODUCTION OFFICE	
OPERATOR	

NEW MEXICO OIL CONSERVATION COMMISSION
Santa Fe, New Mexico

Form C-101
Revised (12/1/55)

HOBBBS, NEW MEXICO

NOTICE OF INTENTION TO DRILL

Notice must be given to the District Office of the Oil Conservation Commission and approval obtained before drilling or recompletion begins. If changes in the proposed plan are considered advisable, a copy of this notice showing such changes will be returned to the sender. Submit this notice in QUINTUPPLICATE. One copy will be returned following approval. See additional instructions in Rules and Regulations of the Commission. If State Land submit 6 Copies Attach Form C- 128 in triplicate to first 3 copies of form C-101

Hobbs, New Mexico
(Place)

February 7, 1964
(Date)

OIL CONSERVATION COMMISSION
SANTA FE, NEW MEXICO

Gentlemen:

You are hereby notified that it is our intention to commence the Drilling of a well to be known as

Skelly Oil Company
(Company or Operator)

Hobbs "P"
(Lease)

Well No. 1, in "K" (Unit) The well is

located 1980 feet from the South line and 1980 feet from the West line of Section 20, T. 14-S, R. 34-E, NMPM.

(GIVE LOCATION FROM SECTION LINE) East, Sec. 20, T. 14-S, R. 34-E, NMPM. Pool, Lea County

If State Land the Oil and Gas Lease is No. 00 - 4779

If patented land the owner is

Address

We propose to drill well with drilling equipment as follows: To be drilled with Rotary Tools from surface to total depth.

The status of plugging bond is Blanket Bond No. 1253688 for \$100,000.00 with Federal Insurance Company.

Drilling Contractor Not Selected

We intend to complete this well in the Permian - Penn formation at an approximate depth of 10,500 feet.

CASING PROGRAM

We propose to use the following strings of Casing and to cement them as indicated:

Size of Hole	Size of Casing	Weight per Foot	New or Second Hand	Depth	Sacks Cement
17-1/2"	13-3/8"	35.6#	New	300'	300
11"	8-5/8"	32#	New	4500'	200
7-7/8"	5-1/2"	17#	New	10,500'	500

If changes in the above plans become advisable we will notify you immediately.

ADDITIONAL INFORMATION (If recompletion give full details of proposed plan of work.)

The Pump & Plug Process will be used in cementing all strings of casing and cement will be circulated to surface on the 13-3/8" OD casing. The 5-1/2" OD casing will be set at approximately 10,500'. The 5-1/2" OD casing will be perforated and treated with approximately 2,000 gallons of Acid.

Approved _____, 19____
Except as follows:

Sincerely yours,

Skelly Oil Company
(Company or Operator)

By (ORIGINAL) H. E. Ash

Position Dist. Supt.

Send Communications regarding well to

Name Skelly Oil Company

Address Box 730 - Hobbs, New Mexico

OIL CONSERVATION COMMISSION

By _____ District 1

NEW MEXICO OIL CONSERVATION COMMISSION
WELL LOCATION AND ACREAGE DEDICATION PLAT

SEE INSTRUCTIONS FOR COMPLETING THIS FORM ON THE REVERSE SIDE

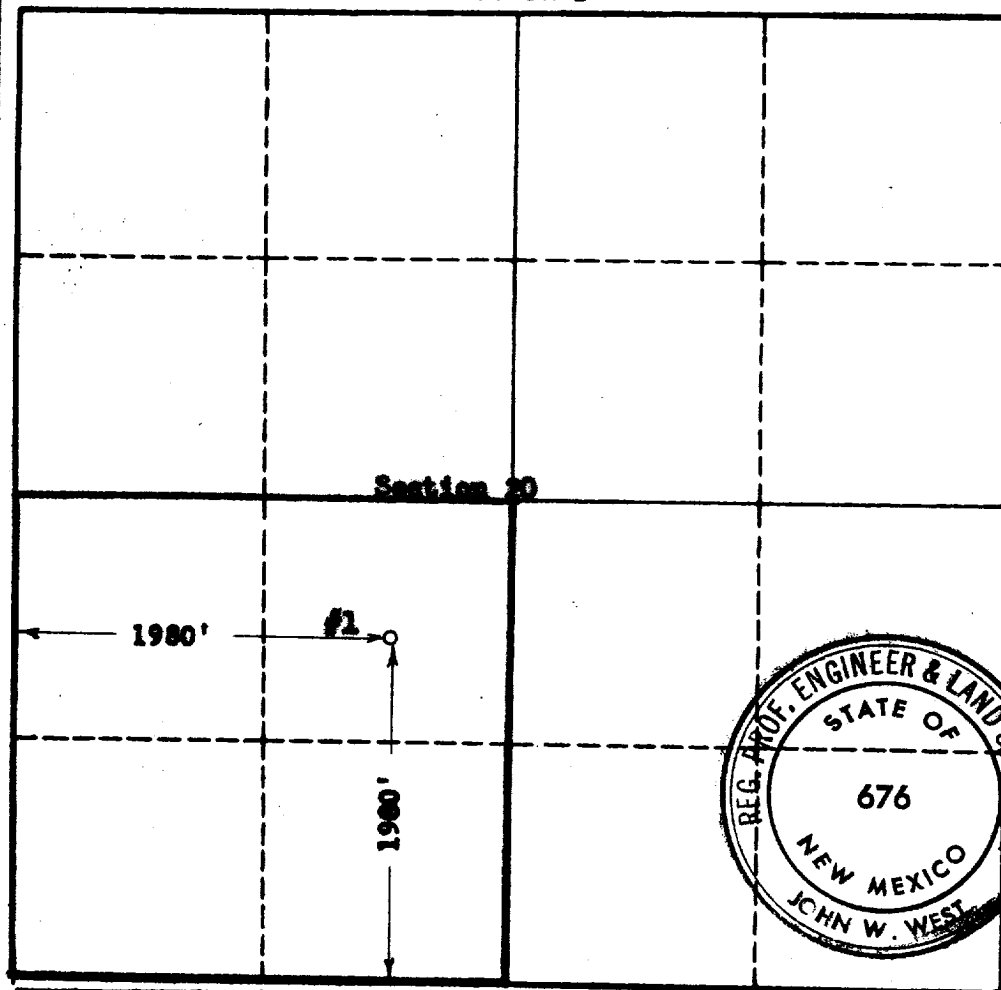
SECTION A

Operator SKELLY OIL COMPANY		Lease HOBBS NthW		Well No. 1
Unit Letter K	Section 20	Township 14 SOUTH	Range 34 EAST	County LEA
Actual Footage Location of Well: 1980 feet from the SOUTH line and 1980 feet from the WEST line				
Ground Level Elev. 5000	Producing Formation Permo Penn	Pool East Saunders Permo Penn	Dedicated Acreage: 160 Acres	

1. Is the Operator the only owner in the dedicated acreage outlined on the plat below? YES ☒ NO ☐ ("Owner" means the person who has the right to drill into and to produce from any pool and to appropriate the production either for himself or for himself and another. (65-3-29 (e) NMSA 1935 Comp.)
2. If the answer to question one is "no," have the interests of all the owners been consolidated by communitization agreement or otherwise? YES ☐ NO ☐ If answer is "yes," Type of Consolidation _____
3. If the answer to question two is "no," list all the owners and their respective interests below:

Owner	Land Description

SECTION B

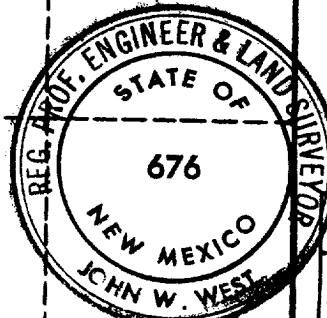


CERTIFICATION

I hereby certify that the information in SECTION A above is true and complete to the best of my knowledge and belief.

Name (ORIGINAL) (SIGNED) H. E. Ash
Position Dist. Supt.
Company Skelly Oil Company
Date February 6, 1964

I hereby certify that the well location shown on the plat in SECTION B was plotted from field notes of actual surveys made by me or under my supervision, and that the same is true and correct to the best of my knowledge and belief.



Date Surveyed 2-3-1964
Registered Professional Engineer and/or Land Surveyor, JOHN W. WEST
Certificate No. N.M. - P.E. & L.S. NO. 676