

OIL CONSERVATION DIVISION

STATE OF NEW MEXICO
ENERGY AND MINERALS DEPARTMENT

P. O. BOX 2088

SANTA FE, NEW MEXICO 87501

Form C-102
Revised 10-1-78

All distances must be from the outer boundaries of the Section.

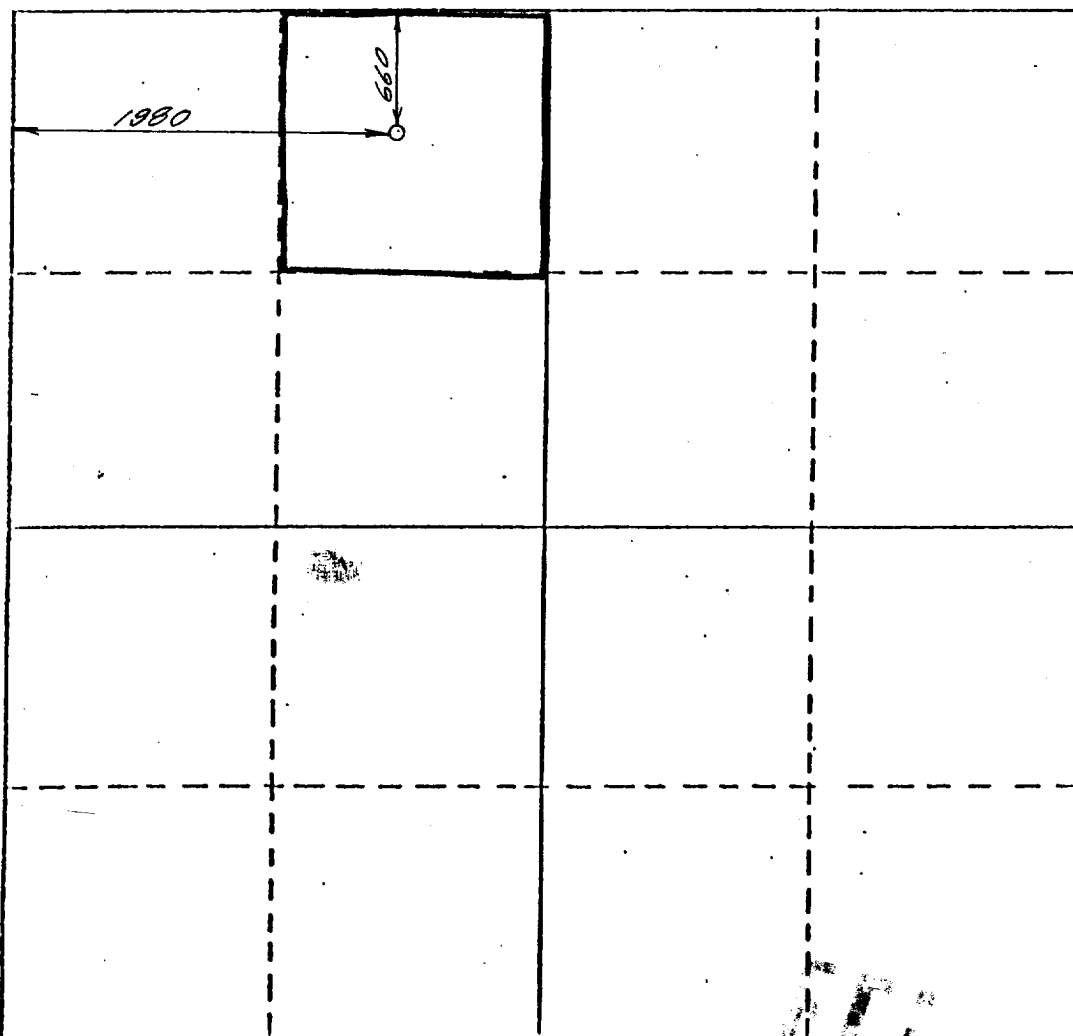
| | | | | | |
|----------------------------------|-----------------------------------|------------------------------|------------------|--------------------------------|---------------|
| Operator Grover Oil Company | | | Lease Caudill | | Well No. 1 |
| Unit Letter C | Section 34 | Township 13 South | Range 31 East | County Chaves | |
| Actual Footage Location of Well: | | | | | |
| 660 feet from the North line and | | 1980 feet from the West line | | | |
| Ground Level Elev. 4267 | Producing Formation Queen Sand | Pool | | Dedicated Acreage: 40 Acres | |

1. Outline the acreage dedicated to the subject well by colored pencil or hatchure marks on the plat below.
2. If more than one lease is dedicated to the well, outline each and identify the ownership thereof (both as to working interest and royalty).
3. If more than one lease of different ownerships is dedicated to the well, have the interests of all owners been consolidated by communitization, unitization, forced-pooling, or otherwise?

☐ Yes ☐ No If answer is "yes," type of consolidation _____

If answer is "no," list the owners and tract descriptions which have actually been consolidated. (Use reverse side of this form if necessary.) _____

No allowable will be assigned to the well until all interests have been consolidated (by communitization, unitization, forced-pooling, or otherwise) or until a non-standard unit, eliminating such interests, has been approved by the Division.



CERTIFICATION

I hereby certify that the information contained herein is true and complete to the best of my knowledge and belief.

Daniel J. Miller

Name
Daniel T. Miller

Position
Agent.

Company
Grover Oil Company

Date
9-2-86

I hereby certify that the well location shown on this plat was plotted from field notes of actual surveys made by me or under my supervision, and that the same is true and correct to the best of my knowledge and belief.

25 August 1986

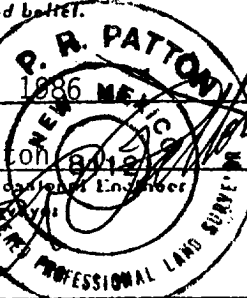
Date Surveyed

P. R. Patton

Registered Professional Engineer and/or Land Surveyor

8112

Certificate No.



0 330 660 990 1320 1650 1980 2310 2640 2970 3300 3630 3960 4290 4620 4950 5280 5610 5940 6270 6600



RECEIVED

OCT 13 1986

A.C.S.
HOBBS OFFICE

RECEIVED

SEP 15 1986

A.C.S.
HOBBS OFFICE

821015 180024

173