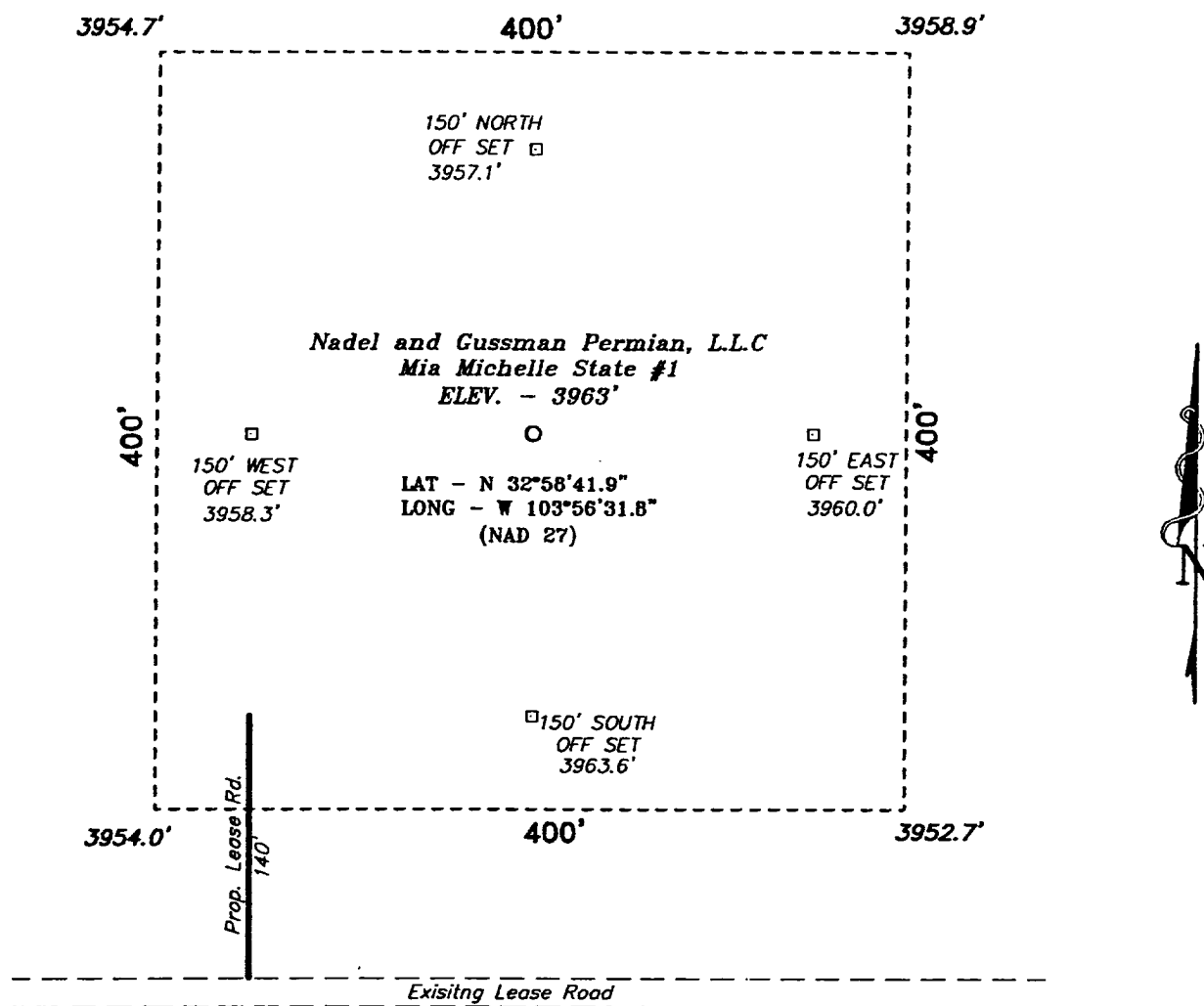
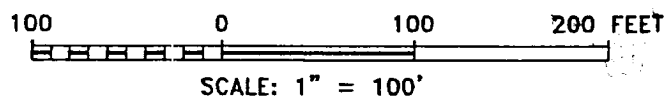


SECTION 32, TOWNSHIP 15 SOUTH, RANGE 30 EAST, N.M.P.M.,
CHAVES COUNTY, NEW MEXICO.



DIRECTIONS TO WELL LOCATION

FROM THE JUNCTION OF US HWY 82 AND CO. RD. 217 IN LOCO HILLS, GO NORTH ON CO. RD. 217 APPROX. 13 MILES TO HWY 31; THENCE WEST ON HWY 31 APPROX. 9 MILES TO A LEASE ROAD; THENCE SOUTH ON LEASE ROAD APPROX. 4 MILES; THENCE EAST APPROX. 1500 FEET TO A PROPOSED LEASE ROAD.



NADEL AND GUSSMAN PERMIAN, L.L.C.

REF: Mia Michelle State No. 1 / Well Pad Topo

THE MIA MICHELLE STATE No. 1 LOCATED 467' FROM THE NORTH LINE AND 1200' FROM THE EAST LINE OF SECTION 32, TOWNSHIP 15 SOUTH, RANGE 30 EAST, N.M.P.M., CHAVES COUNTY, NEW MEXICO.

BASIN SURVEYS P.O. BOX 1786 - HOBBS, NEW MEXICO

W.O. Number: 2593

Drawn By: K. GOAD

Date: 07-01-2002

Disk: KJG #123 - 2593A.DWG

Survey Date: 07-01-2002

Sheet 1 of 1 Sheets