

NEW MEXICO OIL CONSERVATION COMMISSION  
Santa Fe, New Mexico

NOTICE OF INTENTION TO DRILL OR RECOMPLETE

Notice must be given to the District Office of the Oil Conservation Commission and approved before drilling or recompletion begins. If changes in the proposed plan are considered advisable, a copy of this notice showing such changes will be returned to the sender. Submit this notice in QUINTUPPLICATE. One copy will be returned following approval. See additional instructions in Rules and Regulations of the Commission. If State Land submit 6 Copies

Midwest Oil Corporation 1500 Wilco Bldg., Midland, Texas February 17, 1963  
(Place) (Date)

OIL CONSERVATION COMMISSION  
SANTA FE, NEW MEXICO

Gentlemen:

You are hereby notified that it is our intention to commence the (Drilling) (Recompletion) of a well to be known as

Midwest Oil Corporation  
(Company or Operator)

State "C"

(Lease)

, Well No. 1, in K The well is

located 1980 feet from the South line and 1980 feet from the

West

Line of Section 32, T. 13-S, R. 34-E, NMPM.

(GIVE LOCATION FROM SECTION LINE)

Pool, Lea County

If State Land the Oil and Gas Lease is No. K-1038

If patented land the owner is

Address

We propose to drill well with drilling equipment as follows: Rotary

The status of plugging bond is Active

Drilling Contractor Cactus Drilling Corporation

We intend to complete this well in the Penn. formation at an approximate depth of 11,000 feet.

CASING PROGRAM

We propose to use the following strings of Casing and to cement them as indicated:

| Size of Hole | Size of Casing | Weight per Foot | New or Second Hand | Depth | Sacks Cement |
|--------------|----------------|-----------------|--------------------|-------|--------------|
| 17 1/2"      | 13 3/8"        | 35.6            | New                | 300   | 300          |
| 11"          | 8 5/8"         | 24# & 32#       | New                | 4500  | 500          |
| 7 7/8"       | 5 1/2"         | 155#, 17# & 20# | New                | 11000 | 500          |

If changes in the above plans become advisable we will notify you immediately.

ADDITIONAL INFORMATION (If recompletion give full details of proposed plan of work.)

Approved, 19.....  
Except as follows:

OIL CONSERVATION COMMISSION

By.....

Sincerely yours,

Midwest Oil Corporation

(Company or Operator)

By.....

Position.....

District Clerk

Send Communications regarding well to

Name.....

Midwest Oil Corporation

Address.....

1500 Wilco Bldg., Midland, Texas

NEW MEXICO OIL CONSERVATION COMMISSION  
HARRIS OFFICE B.C.C.  
WELL LOCATION AND ACREAGE DEDICATION PLAT

FORM C-128  
Revised 5/1/57

SEE INSTRUCTIONS FOR COMPLETING THIS PLAT IN THE REVERSE SIDE

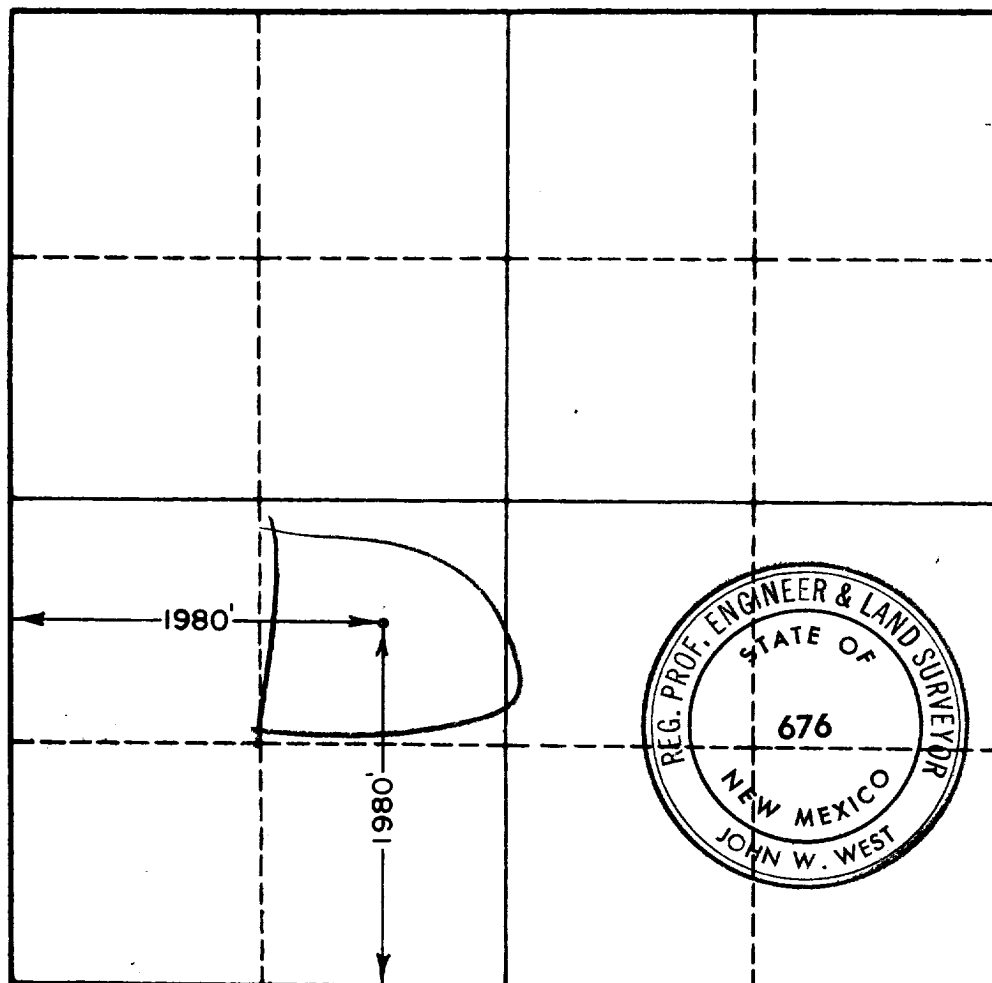
SECTION A

|  |                                    |                             |   |  |                      |
|--|------------------------------------|-----------------------------|---|--|----------------------|
| Operator<br><b>MIDWEST OIL CORP.</b>   |                                    |                             | Lease<br><b>STATE "C"</b>                       |  | Well No.<br><b>1</b> |
| Unit Letter<br><b>K</b>  | Section<br><b>32</b>               | Township<br><b>13 SOUTH</b> | Range<br><b>34 EAST</b>                         | County<br><b>LEA</b>                     |                      |
| Actual Footage Location of Well:<br><b>1980</b> feet from the <b>SOUTH</b> line and <b>1980</b> feet from the <b>WEST</b> line |                                    |                             |   |  |                      |
| Ground Level Elev.   | Producing Formation<br><b>Penn</b> |                             | Pool<br><i>Childress</i><br><b>Undesignated</b> | Dedicated Acreage:<br><b>80 40</b> Acres |                      |

1. Is the Operator the only owner in the dedicated acreage outlined on the plat below? YES X NO \_\_\_\_ . ("Owner" means the person who has the right to drill into and to produce from any pool and to appropriate the production either for himself or for himself and another. (65-3-29 (e) NMSA 1955 Comp.)
2. If the answer to question one is "no," have the interests of all the owners been consolidated by communitization agreement or otherwise? YES \_\_\_\_ NO \_\_\_\_ . If answer is "yes," Type of Consolidation \_\_\_\_
3. If the answer to question two is "no," list all the owners and their respective interests below:

| Owner | Land Description |
|-------|------------------|
|       |                  |
|       |                  |

SECTION B



CERTIFICATION

I hereby certify that the information in SECTION A above is true and complete to the best of my knowledge and belief.

|                                     |
|-------------------------------------|
| Name<br><i>W.C. McWhorter</i>       |
| Position<br><b>District Clerk</b>   |
| Company<br><b>Midwest Oil Corp.</b> |
| Date<br><b>February 17, 1965</b>    |

I hereby certify that the well location shown on the plat in SECTION B was plotted from field notes of actual surveys made by me or under my supervision, and that the same is true and correct to the best of my knowledge and belief.

|   |
|---|
| Date Surveyed<br><b>2-13-65</b>   |
| Registered Professional Engineer and/or Land Surveyor, <b>JOHN W. WEST</b>      |
| Certificate No.<br><i>John W. West</i><br><b>N.M. - P.E. &amp; L.S. NO. 676</b> |