

# WRS COMPLETION REPORT

COMPLETIONS SEC 22 TWP 14S RGE 34E  
PI# 30-T-0014 10/13/86 30-025-21660-0001 PAGE 1

NMEX LEA \* 2086FSL 766FEL SEC NE SE  
STATE COUNTY FOOTAGE SPOT  
TIPTON DWIGHT A D X  
OPERATOR WELL CLASS INIT FIN

1 UNION STATE  
WELL NO. LEASE NAME  
4101GR HIGH PLAINS  
OPER ELEV FIELD POOL AREA

API 30-025-21660-0001  
LEASE TYPE NO. PERMIT OR WELL I.D. NO.  
10/02/1986 AB-LOC  
SPUD DATE COMP. DATE TYPE TOOL STATUS

9700 PNNSYLVN  
PROJ. DEPTH PROJ. FORM CONTRACTOR

OTD 10567  
DRILLERS T.D. LOG T.D. PLUG BACK TD OLD T.D. FORM T.D.

## LOCATION DESCRIPTION

24 MI SE CAPROCK, NM

## DRILLING PROGRESS DETAILS

TIPTON DWIGHT A  
BOX 1597  
LOVINGTON, NM 88260  
505-396-2114  
OWWO: OLD INFO: FORMERLY SUNSET INTERNATIONAL  
1 UNION-STATE. SPUD 2/16/66. 13 3/8 @ 350  
W/300 SX, 8 5/8 @ 4475 W/350 SX, 4 1/2 @ 10567  
W/300 SX. LOG TOP: PERMO-PENNSYLVANIAN  
10403. OTD 10567. COMP 4/20/66. D&A.  
11/21 LOC/1985/  
10/06 ABND OWWO

IC# 300257058885

Copyrighted  
Reproduction  
Prohibited



Petroleum Information  
CORPORATION

PI-WRS-GE  
Form No 18

**NEW MEXICO OIL CONSERVATION COMMISSION  
WELL LOCATION AND ACREAGE DEDICATION PLAT**

Form C-102  
Supersedes C-128  
Effective 1-1-65

All distances must be from the outer boundaries of the Section.

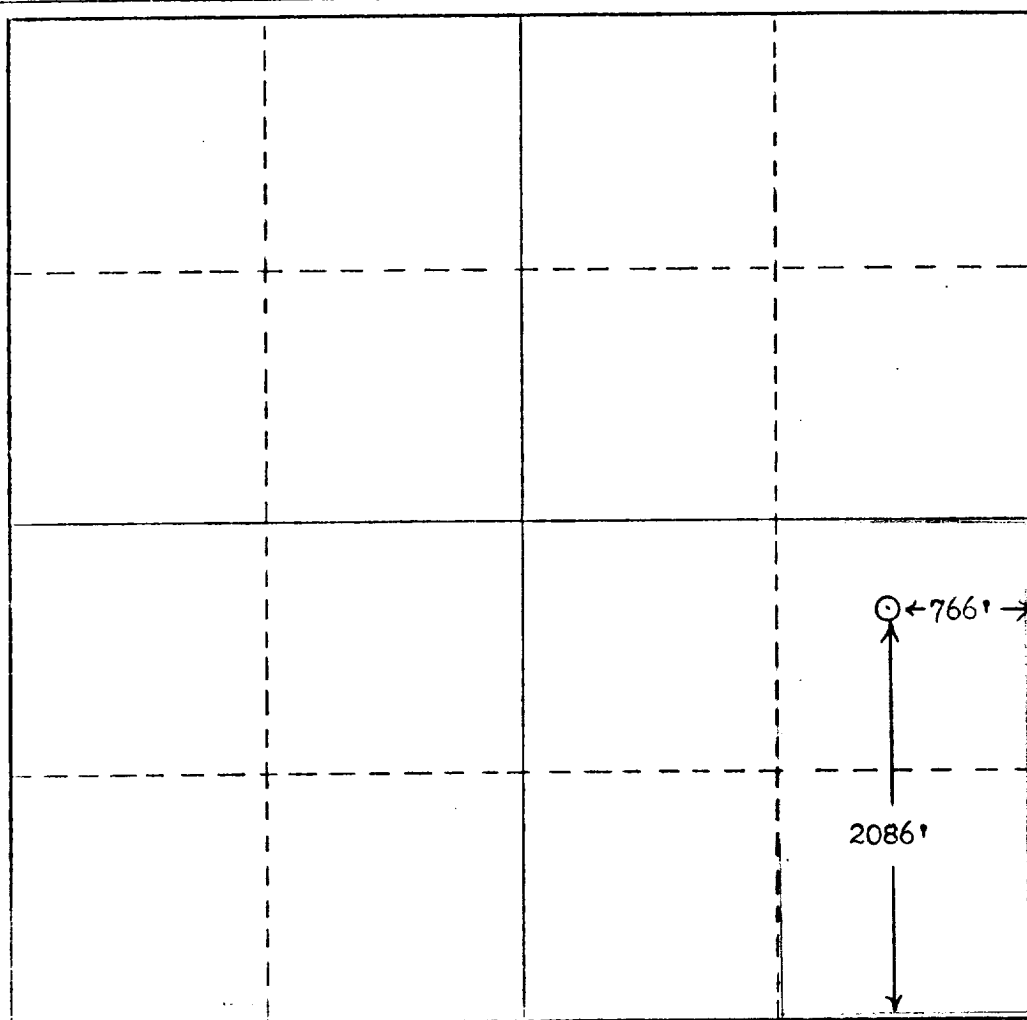
Operator <b>Dwight A. Tipton</b>			Lease <b>Union State</b>		Well No. <b>1</b>
Unit Letter <b>I</b>	Section <b>22</b>	Township <b>14S</b>	Range <b>34E</b>	County <b>Lea</b>	
Actual Footage Location of Well:					
<b>2086</b> feet from the <b>South</b> line and		<b>766</b> feet from the <b>East</b> line			
Ground Level Elev. <b>4100.9</b>	Producing Formation <b>Penn</b>	Pool <b>High Plains</b>		Dedicated Acreage: <b>80</b> Acres	

1. Outline the acreage dedicated to the subject well by colored pencil or hachure marks on the plat below.
2. If more than one lease is dedicated to the well, outline each and identify the ownership thereof (both as to working interest and royalty).
3. If more than one lease of different ownership is dedicated to the well, have the interests of all owners been consolidated by communitization, unitization, force-pooling, etc?

☐ Yes   ☐ No   If answer is "yes," type of consolidation \_\_\_\_\_

If answer is "no," list the owners and tract descriptions which have actually been consolidated. (Use reverse side of this form if necessary.) \_\_\_\_\_

No allowable will be assigned to the well until all interests have been consolidated (by communitization, unitization, forced-pooling, or otherwise) or until a non-standard unit, eliminating such interests, has been approved by the Commission.



**CERTIFICATION**

*I hereby certify that the information contained herein is true and complete to the best of my knowledge and belief.*

Name

*Dwight A. Tipton*

Position

**Agent**

Company

**Dwight A. Tipton**

Date

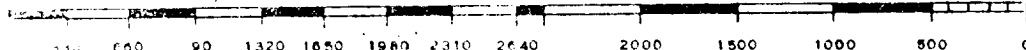
**12/3/85**

*I hereby certify that the well location shown on this plat was plotted from field notes of actual surveys made by me or under my supervision, and that the same is true and correct to the best of my knowledge and belief.*

Date Surveyed

Registered Professional Engineer  
and/or Land Surveyor

Certificate No.



RECEIVED

DEC 4 - 1985

O.C.D.  
HOBBS OFFICE

COUNTY	LFA	FIELD	High Plains	STATE	NM
OPR	SUNSET INTERNATIONAL PETROLEUM CORP.				MAP
1 Union-State					
Sec. 22, T-14-S, R-34-E				CO-ORD	
2086' FSL, 766' FEL of Sec.				MN 21660	
Spd 2-16-66		CLASS		EL [REDACTED]	
Cmp 4-20-66		FORMATION	DATUM	FORMATION	DATUM
CSG & SX - TUBING					
13 3/8" 350' 300					
8 5/8" 4475' 350					
4 1/2" 10567' 300					
LOGS EL GR RA IND HC A					
		TD 10567'			

PLUGGED & ABANDONED

Distribution limited and publication prohibited by subscribers' agreement.  
Reproduction rights reserved by Williams & Lee Scouting Service, Inc.

CONT.	PROP DEPTH	10,600'	TYPE
DATE			

F.R. 2-17-66; Opr's Elev. 4114' KB  
PD 10,600' - Penn.

2-21-66 Drlg. 3515'.  
2-28-66 Drlg. 5297'.  
3-7-66 Drlg. 7530'.  
3-14-66 Drlg. 9455' lm & sh.  
3-21-66 TD 10567', running casing.  
No cores or DST's.  
3-28-66 TD 10567', RU Completion Unit.  
4-4-66 TD 10567', swbg.  
Perf 10521-522'  
Ac (10521-522') 250 gals.  
Swbd salt wtr.  
Set BP @ 10510'  
Perf 10424-427', 10459-461', 10470-472',  
10480-488'

4-11-66 TD 10567', prep to swab.  
Swbd 10 BO & wtr (10424-488')  
Set Pkr @ 10476'  
Swbd 5 BW PH, no oil (10480-488')  
Set Pkr @ 10420'  
Swbd 4 BF PH (15% oil) 10424-427')  
Set Pkrs @ 10444' & 10475'  
Swbd 1 BOPH, no wtr (10459-472')  
Att. Acid (10424-472') 250 gals.  
would not break.  
Set BP @ 10476'  
Perf 10423-428', 10450-453', 10458-464'  
W/2 SPF  
4-25-66 TD 10567', prep to P&A.

Ac (10423-464') 2500 gals.  
Swbd 41 BLO/24 hrs (10423-464')  
Att. Ac (10423-464') 250 gals.  
Would not take.  
LOG TOP: Permo-Pennsylvanian 10403'.  
5-2-66 TD 10567', PLUGGED & ABANDONED.