

NEW MEXICO OIL CONSERVATION COMMISSION
WELL LOCATION AND ACREAGE DEDICATION PLAT
HOBBS OFFICE O. C. C.

Form C-102
Supersedes C-128
Effective 1-1-65

All distances must be from the outer boundaries of the Section.

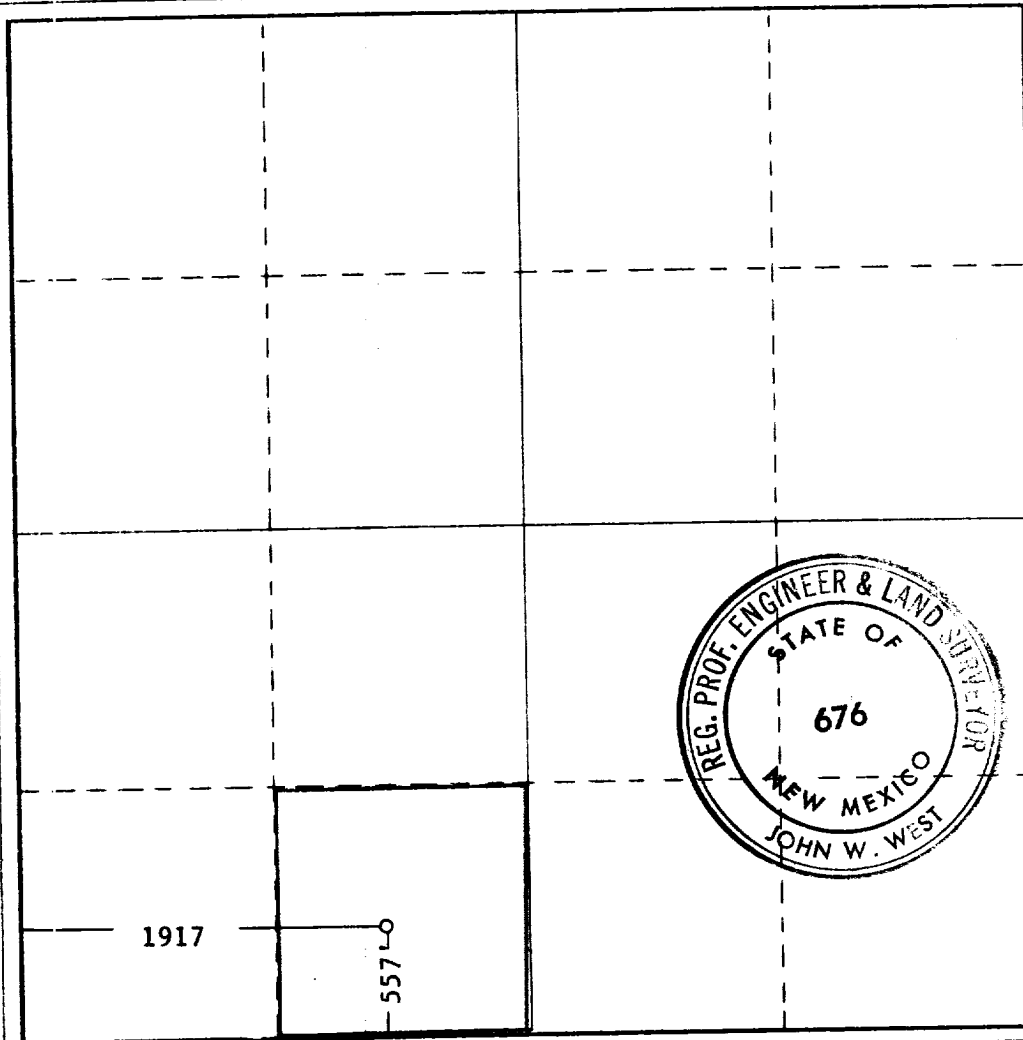
Operator CORINNE GRACE		Lease DEC. 19 3:32 PM '66		Well No. 3
Unit Letter N	Section 11	Township 12 SOUTH	Range 34 EAST	County LEA
Actual Portage Location of Well: 557 feet from the SOUTH line and 1917 feet from the WEST line				
Ground Level Elev.	Producing Formation San Andres		Pool Wildcat	Dedicated Acreage: 40 Acres

1. Outline the acreage dedicated to the subject well by colored pencil or hachure marks on the plat below.
2. If more than one lease is dedicated to the well, outline each and identify the ownership thereof (both as to working interest and royalty).
3. If more than one lease of different ownership is dedicated to the well, have the interests of all owners been consolidated by communitization, unitization, force-pooling, etc?

☐ Yes ☐ No If answer is "yes," type of consolidation _____

If answer is "no," list the owners and tract descriptions which have actually been consolidated. (Use reverse side of this form if necessary.) _____

No allowable will be assigned to the well until all interests have been consolidated (by communitization, unitization, forced-pooling, or otherwise) or until a non-standard unit, eliminating such interests, has been approved by the Commission.



CERTIFICATION

I hereby certify that the information contained herein is true and complete to the best of my knowledge and belief.

Name
A. L. Smith

Position
Agent

Company
Corinne Grace

Date
December 19, 1966

I hereby certify that the well location shown on this plat was plotted from field notes of actual surveys made by me or under my supervision, and that the same is true and correct to the best of my knowledge and belief.

Date Surveyed

DEC. 18, 1966

Registered Professional Engineer
and/or Land Surveyor

John W. West
Certificate No. **676**