

NEW MICO OIL CONSERVATION COMMISSION  
WELL LOCATION AND ACREAGE DEDICATION PLAT

Form C-102  
Supersedes C-128  
Effective 1-1-65

All distances must be from the corner boundaries of the Section.

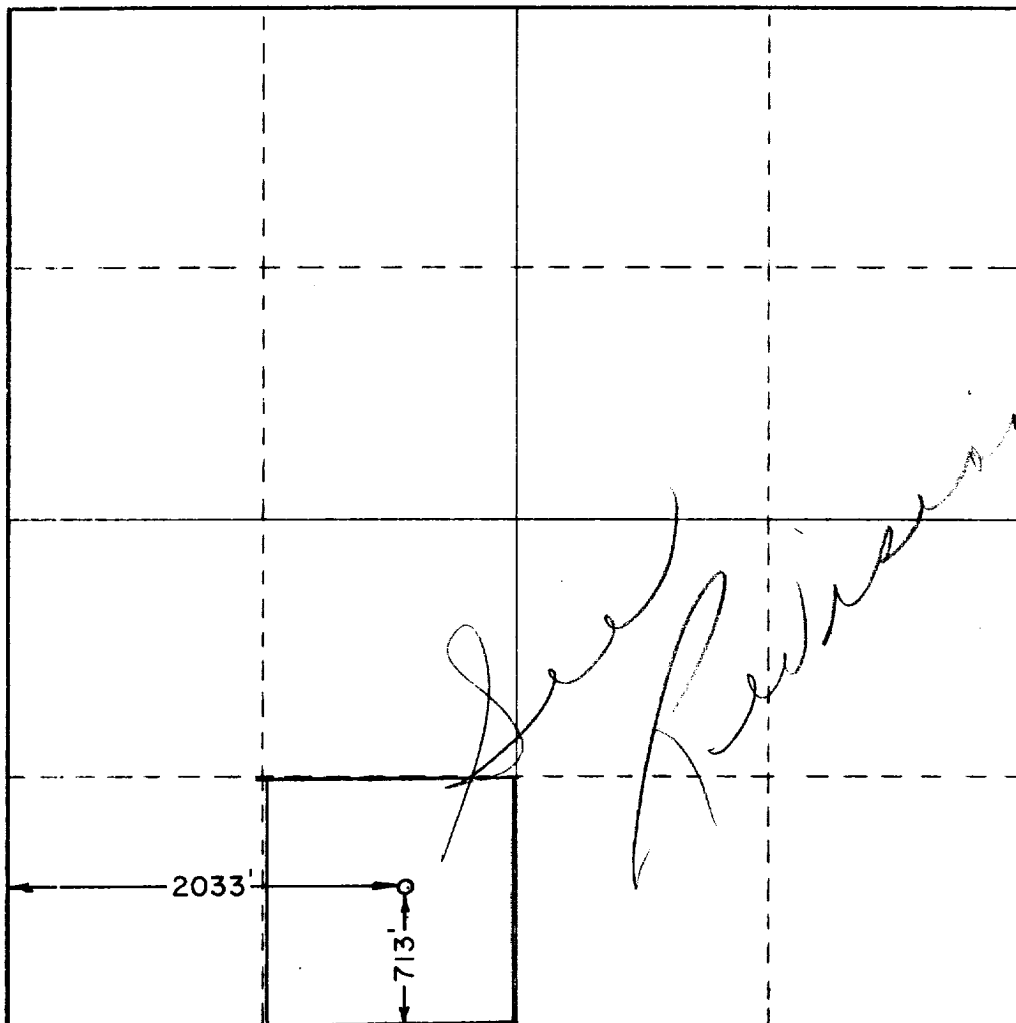
Operator <b>CORINNE GRACE</b>			Lease <b>Dec. 1-1-66</b>		Well No. <b>3</b>
East Letter <b>N</b>	Section <b>11</b>	Township <b>12 SOUTH</b>	Range <b>34 EAST</b>	County <b>LEA</b>	
Actual Plotage Location of Well: <b>713</b> feet from the <b>SOUTH</b> line and <b>2033</b> feet from the <b>WEST</b> line					
Ground Level Elev. <b>1158.8</b>	Producing Formation <b>San Andres</b>		Pool <b>Wilcat</b>		Dedicated Acreage: <b>40</b> Acres

1. Outline the acreage dedicated to the subject well by colored pencil or hachure marks on the plat below.
2. If more than one lease is dedicated to the well, outline each and identify the ownership thereof (both as to working interest and royalty).
3. If more than one lease of different ownership is dedicated to the well, have the interests of all owners been consolidated by communitization, unitization, force-pooling, etc?

☐ Yes ☐ No If answer is "yes," type of consolidation \_\_\_\_\_

If answer is "no," list the owners and tract descriptions which have actually been consolidated. (Use reverse side of this form if necessary.) \_\_\_\_\_

No allowable will be assigned to the well until all interests have been consolidated (by communitization, unitization, forced-pooling, or otherwise) or until a non-standard unit, eliminating such interests, has been approved by the Commission.



CERTIFICATION

I hereby certify that the information contained herein is true and complete to the best of my knowledge and belief.

Name **H. L. Smith**

Position  
**Agent**

Company  
**Corinne Grace**

Date  
**December 8, 1966**

I hereby certify that the well location shown on this plat was plotted from field notes of actual surveys made by me or under my supervision, and that the same is true and correct to the best of my knowledge and belief.

Date Surveyed  
**DECEMBER 6, 1966**

Registered Professional Engineer and/or Land Surveyor

**John W. Cebest**  
Certificate No. **676**



20' 43" 01 1

00000000

00000000

00000000

00000000

00000000

00000000

00000000

COUNTY **LEA** FIELD **Wildcat** STATE **NM**

OPR **GRACE, CORINNE** MAP

**3** **Ranger Lake**

**Sec. 11, T-12-S, R-34-E**

**557' FSL, 1917' FWL of Sec.** CO-ORD **MN 21945**

**Spd 12-20-66**

**Cmp 1-17-67**

CSG & SX - TUBING	FORMATION		CLASS		EL
	FORMATION	DATUM	FORMATION	DATUM	
8 5/8" 378' 230					
4 1/2" 5315' 1000					

LOGS EL GR RA IND HC A

**TD 5315', PRD 5269'**

IP San Andres Perfs 4833-68' Pmpd 54 BOPD + 15 BW. Pot. Based on 24 hr test.

Distribution limited and publication prohibited by subscribers' agreement.  
 Reproduction rights reserved by Williams & Lee Scouting Service, Inc.

CONT. **McFarland Drlg. Co.** PROP DEPTH **5200'** TYPE **RT**

DATE

F.R. 12-15-66  
 PD 5200' - SA  
 Contractor - McFarland  
 12-22-66 AMEND FOOTAGE: Formerly 713' FSL, 2033' FWL of  
 Sec.  
 1-3-67 Coring @ 4989'.  
 Cored 4815-32', rec 16½', no description;  
 Cored 4883-4925', rec 42', no description;  
 DST 4832-4925', open 2 hrs,  
 Rec 3000' Salt Wtr, w/tr. oil,  
 Pressures not available.

LEA Wildcat NM  
GRACE, CORINNE, #3 Ranger Lake

Sec. 11-12S-34E  
Page #2

3-67

Cont.  
Cored 4925-33', rec 8' no description;  
Cored 4933-52', rec 19' no description;  
Cored 4952-66', rec 14' no description;

1-9-67

TD 5315', prep to run casing.  
SP DST 4831-89', pkrs failed.  
Cored 4966-89', rec 23' no description.  
Cored 4989-5015', rec 26' no description.  
DST 4939-5015', open 1 hr,  
Rev out 648' Salt Wtr + 2081' Sli OC  
Salt Wtr,  
45 min ISIP 1889#, FP 106-1508#,  
2 hr FSIP 1889#.

1-16-67

No Report

1-23-67

No Report

1-24-67

TD 5315', PBD 5269', COMPLETED.  
Perf @ 4833', 4843', 4849', 4858', 4864',  
4868' w/1 SPI  
Acid (4833-68') 1000 gals.  
(Tops & Core Descriptions not available)

COUNTY LEA FIELD Wildcat STATE NM  
 OPR GRACE, CORINNE MAP  
 3 Ranger Lake  
 Sec. 11, T-12-S, R-34-E CO-ORD  
 557' FSL, 1917' FWL of Sec. MN 21945

	CLASS		EL	
	FORMATION	DATUM	FORMATION	DATUM
CSG & SX - TUBING				
LOGS EL GR RA IND HC A				

Distribution limited and publication prohibited by subscribers' agreement.  
 Reproduction rights reserved by Williams & Lee Scouting Service, Inc.

CONT. PROP. DEPTH 5200' TYPE  
 DATE

F.R. 12-15-66  
 PD 5200' - SA  
 12-22-66 AMEND FOOTAGE: Formerly 713' FSL, 2033' FWL of Sec.