

NO. OF COPIES RECEIVED	
DISTRIBUTION	
SANTA FE	
FILE	
U.S.G.S.	
LAND OFFICE	
OPERATOR	

# NEW MEXICO OIL CONSERVATION COMMISSION

H0585 OFF  
JUL 17 11 43 AM '68

Form C-101  
Revised 1-1-65

5A. Indicate Type of Lease
STATE <input checked="" type="checkbox"/> FEE <input type="checkbox"/>
5. State Oil & Gas Lease No.
K-4421

APPLICATION FOR PERMIT TO DRILL, DEEPEN, OR PLUG BACK			
1a. Type of Work		7. Unit Agreement Name	
b. Type of Well DRILL <input checked="" type="checkbox"/> DEEPEN <input type="checkbox"/> PLUG BACK <input type="checkbox"/> OIL WELL <input type="checkbox"/> GAS WELL <input type="checkbox"/> OTHER <input type="checkbox"/> SINGLE ZONE <input type="checkbox"/> MULTIPLE ZONE <input type="checkbox"/>		M	
2. Name of Operator		8. Farm or Lease Name	
Cayman Corporation		Humble-State	
3. Address of Operator		9. Well No.	
P. O. Box 2099, Palos Verdes Peninsula, California 90274		1	
4. Location of Well		10. Field and Pool, or Wildcat	
UNIT LETTER M LOCATED 660 FEET FROM THE South LINE		Wildcat	
AND 660 FEET FROM THE West LINE OF SEC. 32 TWP. 13S RGE. 37E NMPM		12. County	
19. Proposed Depth		19A. Formation	
12,700		Bend	
20. Rotary or C.T.		Rotary	
21. Elevations (Show whether DF, RT, etc.)		21B. Drilling Contractor	
3886.4 Gr.		Cactus ?	
21A. Kind & Status Plug. Bond		22. Approx. Date Work will start	
Statewide		July 22	

PROPOSED CASING AND CEMENT PROGRAM					
SIZE OF HOLE	SIZE OF CASING	WEIGHT PER FOOT	SETTING DEPTH	SACKS OF CEMENT	EST. TOP
17"	13 3/8"	48	400	250	Circulated
12 1/4"	8 5/8"	24	4700	250	3500

The Operator proposes to drill 17" to 400', set and cement approximately 400 feet of 13 3/8" surface casing. After setting and cementing surface casing, allow approximately 18 hours for the cement to set; recommence drilling a 12 1/4" hole to approximately 4700', set and cement approximately 4700 feet of 8 5/8" intermediate casing with approximately 250 sacks cement, allow approximately 24 hours for the cement to set, and pressure up on casing to check casing and cement for water shut-off. The operator will then drill a 7 7/8" hole to approximately 12,700' testing and evaluating all possible producing horizons encountered, run logs at total depth and if commercial production is indicated, attempt completion.

THE COMMISSION MUST BE NOTIFIED  
14 HOURS BEFORE TO RUNNING 13 3/8"  
CASING

APPROVAL VALID  
UNLESS  
COMMENCED

Oct 16, 1968

IN ABOVE SPACE DESCRIBE PROPOSED PROGRAM; IF PROPOSAL IS TO DEEPEN OR PLUG BACK, GIVE DATA ON PRESENT PRODUCTIVE ZONE AND PROPOSED NEW PRODUCTIVE ZONE. GIVE BLOWOUT PREVENTER PROGRAM, IF ANY.

I hereby certify that the information above is true and complete to the best of my knowledge and belief.

Signed John H. Ford Title Agent Date 7-15-68

(This space for State Use)

APPROVED BY John W. Runyan TITLE Geologist DATE \_\_\_\_\_  
CONDITIONS OF APPROVAL, IF ANY:

**NEW MEXICO OIL CONSERVATION COMMISSION  
WELL LOCATION AND ACREAGE DEDICATION PLAT**

Form C-102  
Supersedes C-128  
Effective 1-1-65

All distances must be from the outer boundaries of the Section.

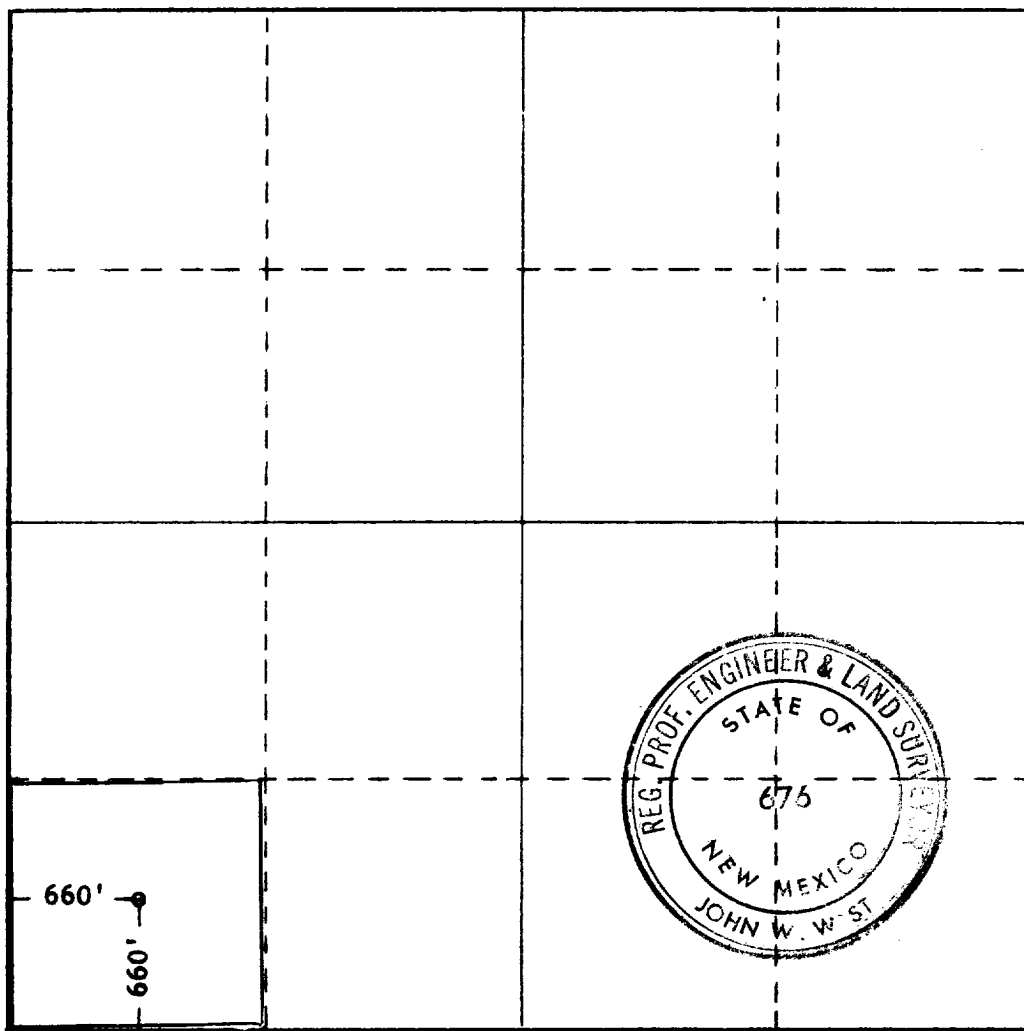
Operator <b>CAYMAN CORP.</b>			Lease <b>WULF STATE</b>		Well No. <b>1</b>
Unit Letter <b>M</b>	Section <b>32</b>	Township <b>13 SOUTH</b>	Range <b>37 EAST</b>	County <b>LEA</b>	
Actual Footage Location of Well:					
<b>660</b>		<b>SOUTH</b>	<b>660</b>		<b>WEST</b>
feet from the		line and	feet from the		line
Ground Level Elev. <b>3886.4</b>	Producing Formation <i>Band</i>	Pool <i>Shiloh</i>	Dedicated Acreage: <b>40</b> Acres		

1. Outline the acreage dedicated to the subject well by colored pencil or hachure marks on the plat below.
2. If more than one lease is dedicated to the well, outline each and identify the ownership thereof (both as to working interest and royalty).
3. If more than one lease of different ownership is dedicated to the well, have the interests of all owners been consolidated by communitization, unitization, force-pooling, etc?

☐ Yes    ☐ No    If answer is "yes," type of consolidation \_\_\_\_\_

If answer is "no," list the owners and tract descriptions which have actually been consolidated. (Use reverse side of this form if necessary.) \_\_\_\_\_

No allowable will be assigned to the well until all interests have been consolidated (by communitization, unitization, forced-pooling, or otherwise) or until a non-standard unit, eliminating such interests, has been approved by the Commission.



**CERTIFICATION**

I hereby certify that the information contained herein is true and complete to the best of my knowledge and belief.

Name: *Don H. Ford*  
 Position: *Agent*  
 Company: *Cayman Corp.*  
 Date: *7-15-68*

I hereby certify that the well location shown on this plat was plotted from field notes of actual surveys made by me or under my supervision, and that the same is true and correct to the best of my knowledge and belief.

Date Surveyed  
**JULY 11, 1968**

Registered Professional Engineer  
and/or Land Surveyor

*John W. West*  
 Certificate No. **676**

