

NEW MEXICO OIL CONSERVATION COMMISSION
WELL LOCATION AND ACREAGE DEDICATION PLAT

Form O-102
Supersedes C-128
Effective 1-1-65

All distances must be from the outer boundaries of the Section.

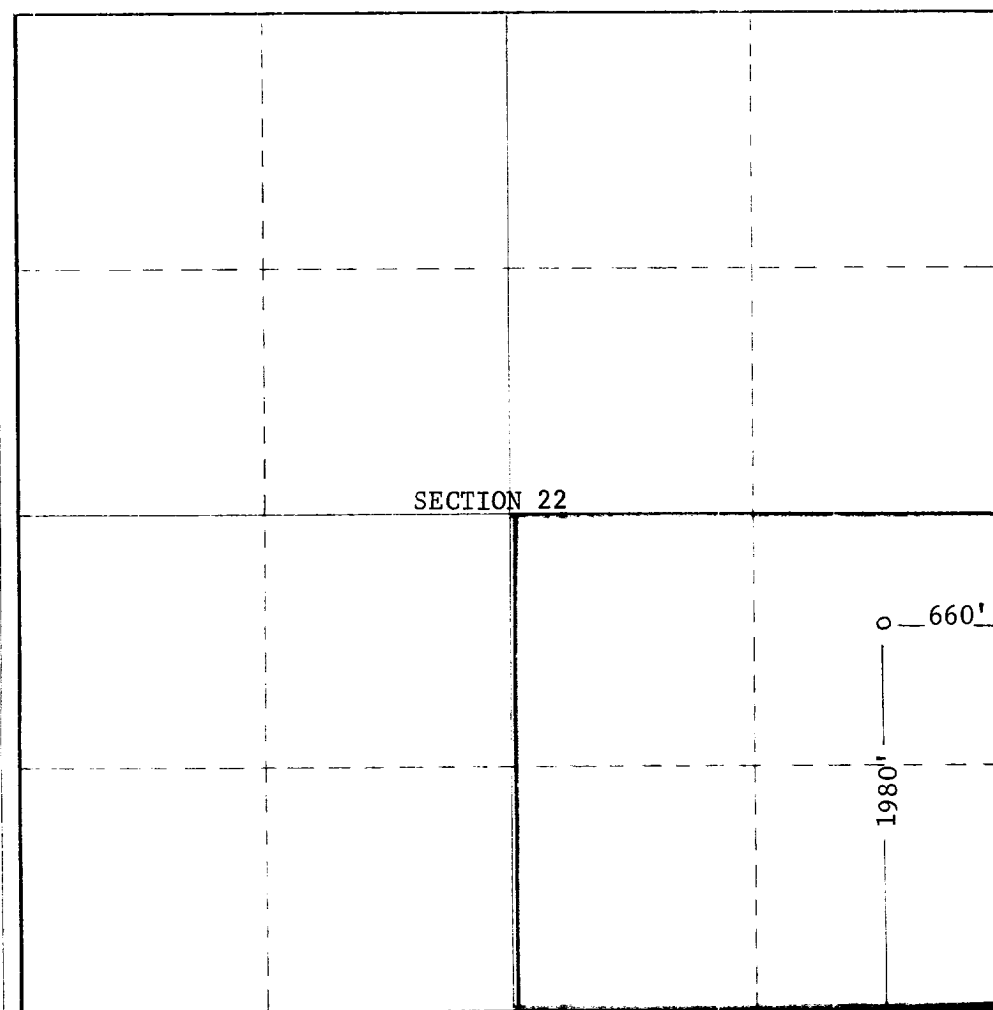
Operator Coastal States Gas Producing Company			Lease State "22"		Well No. 1
Map Letter I	Section 22	Township 14S	Range 32E	County Lea	
Approximate Location of Well: 1980 feet from the south line and 660 feet from the east line					
Ground Level Elev. 4290 (est)	Producing Formation Penn	Pool Tulk (Penn)		Dedicated Acreage: 160 Acres	

- Outline the acreage dedicated to the subject well by colored pencil or hachure marks on the plat below.
- If more than one lease is dedicated to the well, outline each and identify the ownership thereof (both as to working interest and royalty).
- If more than one lease of different ownership is dedicated to the well, have the interests of all owners been consolidated by communitization, unitization, force-pooling, etc?

☐ Yes ☐ No If answer is "yes," type of consolidation NA

If answer is "no," list the owners and tract descriptions which have actually been consolidated. (Use reverse side of this form if necessary.) NA

No allowable will be assigned to the well until all interests have been consolidated (by communitization, unitization, forced-pooling, or otherwise) or until a non-standard unit, eliminating such interests, has been approved by the Commission.



CERTIFICATION

I hereby certify that the information contained herein is true and complete to the best of my knowledge and belief.

Name Joe R. Howard
Position Division Production Superintendent
Company Coastal States Gas Producing Company
Date September 20, 1968

I hereby certify that the well location shown on this plat was plotted from field notes of actual surveys made by me or under my supervision, and that the same is true and correct to the best of my knowledge and belief.

Date Surveyed
July 23, 1968

Registered Professional Engineer and/or Land Surveyor

/s/ John W. West

Certificate No.
676