

NEW MEXICO OIL CONSERVATION COMMISSION  
WELL LOCATION AND ACREAGE DEDICATION PLAT

Form O-162  
Supersedes O-128  
Effective 1-1-65

RECORDS OFFICE O. C. C.  
All distances must be from the outer boundaries of the Section.

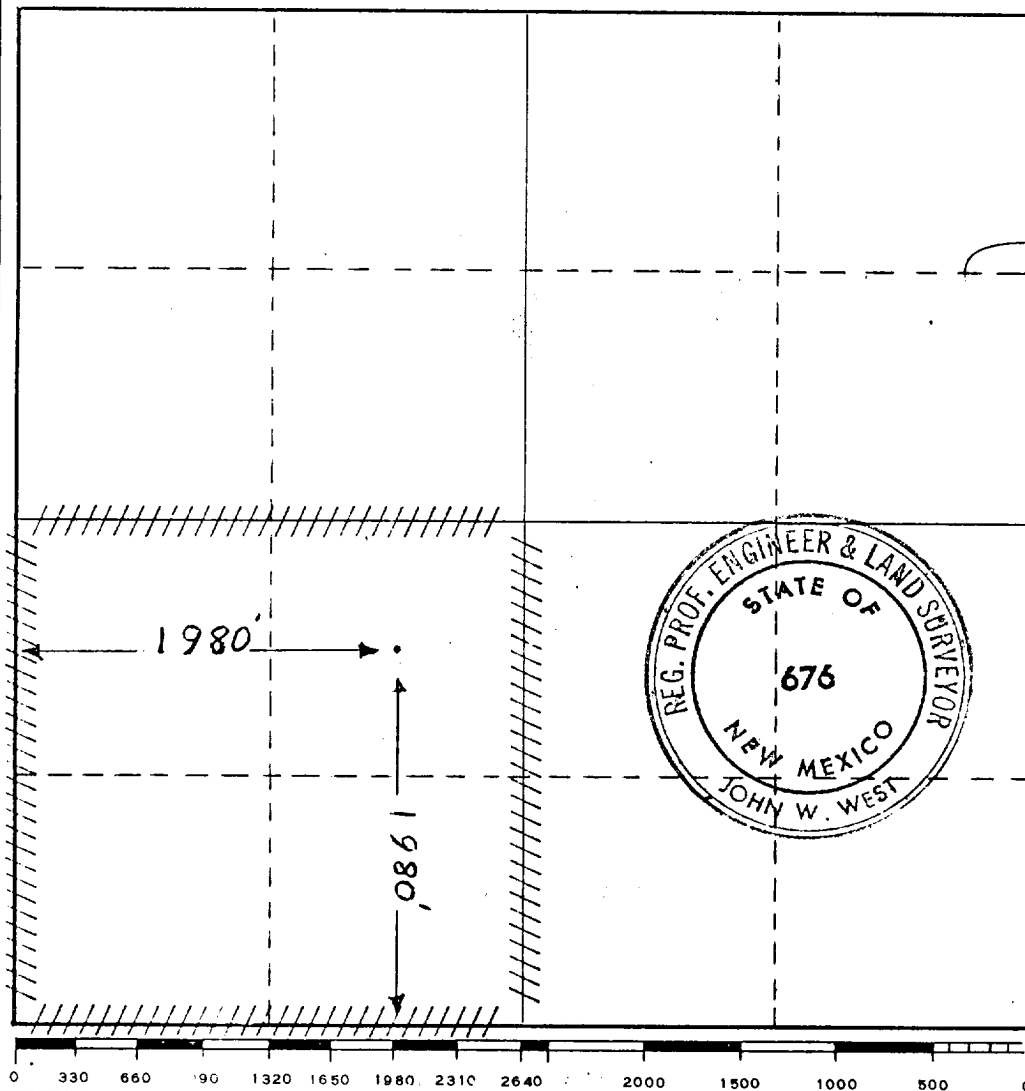
Operator Sinclair Oil & Gas Company		Lease JUL 25 1968		Well No. 1	
Unit Letter A	Section 4	Township 14S	Range 34E	County Lea	
Actual Well Location of Well:					
1980 feet from the South line and		1980 feet from the West line			
Ground Level Elev.	Producing Formation Cerca Upper Penn	Pool Undesignated	Dedicated Acreage: 160 Acres		

1. Outline the acreage dedicated to the subject well by colored pencil or hachure marks on the plat below.
2. If more than one lease is dedicated to the well, outline each and identify the ownership thereof (both as to working interest and royalty).
3. If more than one lease of different ownership is dedicated to the well, have the interests of all owners been consolidated by communitization, unitization, force-pooling, etc?

☐ Yes ☐ No If answer is "yes," type of consolidation \_\_\_\_\_

If answer is "no," list the owners and tract descriptions which have actually been consolidated. (Use reverse side of this form if necessary.) \_\_\_\_\_

No allowable will be assigned to the well until all interests have been consolidated (by communitization, unitization, forced-pooling, or otherwise) or until a non-standard unit, eliminating such interests, has been approved by the Commission.



CERTIFICATION

I hereby certify that the information contained herein is true and complete to the best of my knowledge and belief.

Name  
W. F. Burns  
Position  
Superintendent  
Company  
Sinclair Oil & Gas Co.  
Date  
July 25, 1968

I hereby certify that the well location shown on this plat was plotted from field notes of actual surveys made by me or under my supervision, and that the same is true and correct to the best of my knowledge and belief.

Date Surveyed  
July 18, 1968

Registered Professional Engineer and/or Land Surveyor

Certificate No.  
676