

COUNTY LEA FIELD Lazy J STATE NM 30-025-22705

OPR COASTAL STATES GAS PRODUCING CO. MAP
 2 Federal "20"
 Sec. 20, T-13-S, R-33-E
 660' FSL, 1980' FWL of Sec. CO-ORD

Spd 8-12-68
 Cmp 9-17-68 CLASS

CSG & SX - TUBING	FORMATION	DATUM	FORMATION	DATUM
13 3/8" 362' 400				
8 5/8" 4080' 300				
5 1/2" 9852' 300				
LOGS EL GR RA IND HC A				

TD 9865', PED 9852'

IP Bough "C" Perfs 9736-46' Flwd 240 BOPD. Pot. Based on 24 hr test thru 14/64" chk., TP 650#, CP Pkr, GOR 827, Gravity 40.7.

Distribution limited and publication prohibited by subscribers' agreement.
 Reproduction rights reserved by Williams & Lee Scouting Service, Inc.

CONT. Sharp
 DATE

PROP DEPTH 10,100' TYPE RT

F.R. 8-22-68; Elev. 4256' GL
 PD 10,100' - Penn.
 Contr. - Sharp
 8-26-68 Drlg. 6365'.
 9-4-68 Drlg. 8830'.
 9-9-68 Drlg. 9700'.
 DST 8900-9100', open 1 hr 15 mins,
 rec 641' DM + 20' salt wtr,
 1 hr ISIP 3299#, FP 408-430#,
 1 hr FSIP 2529#, HP 4025#.
 9-16-68 TD 9865', prep perf.
 DST 9663-9714', open 1 hr 50 mins,
 GTS 25 mins,
 rec 670' O&GCM,
 1 hr ISIP 2990#, FP 95-142#,
 1 hr FSIP 3175#.

9-16-68

Cont.

DST 9714-70', open 3 hrs 15 mins,
OTS 4 mins, OTS 11 mins,
Flwd 21 BO + 2 BW in 30 mins thru 1/2"
chk., SFP 450#;
Flwd 39 BO + 4 BW in 1 hr thru 5/8" chk.,
SFP 425#;
Flwd 72 BO + 8 BW in 1 hr 30 mins thru
3/4" chk., SFP 300#,
rec 4200' oil,
1 hr ISIP 2827#, FP 2359-2780#,
1 hr 30 min FSIP 2827#.

9-23-68

TD 9865', PBD 9852', COMPLETE
Perf 9736-46' w/1 SPF
Acid (9736-46') 500 gals MA

LOG: Anhy 1664', Yates 2566', Queen 3460',
San Andres 3993', Wolfcamp 8968', Bough
"C" 9733'.

**NEW MEXICO OIL CONSERVATION COMMISSION
WELL LOCATION AND ACREAGE DEDICATION PLAT**

Form C-102
Supersedes C-128
Effective 1-1-65

All distances must be from the outer boundaries of the Section.

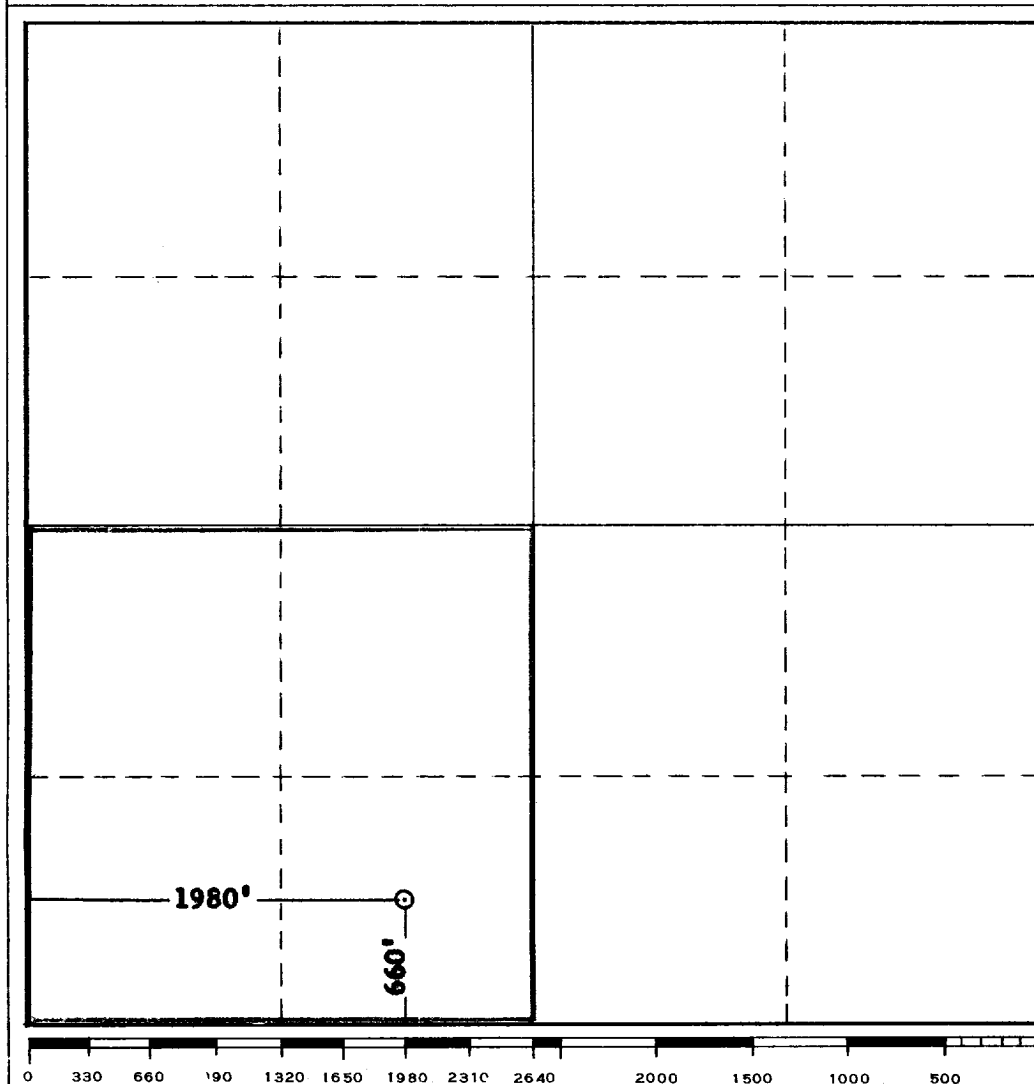
Operator Coastal States Gas Producing Company			Lease Federal "20"		Well No. 2
Unit Letter N	Section 20	Township 13S	Range 33E	County Lea	
Actual Footage Location of Well:					
1980 feet from the west line and		660 feet from the south line			
Ground Level Elev. 4264.4	Producing Formation Up. Penn	Pool North Baum		Dedicated Acreage: 160 Acres	

1. Outline the acreage dedicated to the subject well by colored pencil or hachure marks on the plat below.
2. If more than one lease is dedicated to the well, outline each and identify the ownership thereof (both as to working interest and royalty).
3. If more than one lease of different ownership is dedicated to the well, have the interests of all owners been consolidated by communitization, unitization, force-pooling, etc?

☐ Yes ☐ No If answer is "yes," type of consolidation _____

If answer is "no," list the owners and tract descriptions which have actually been consolidated. (Use reverse side of this form if necessary.) _____

No allowable will be assigned to the well until all interests have been consolidated (by communitization, unitization, forced-pooling, or otherwise) or until a non-standard unit, eliminating such interests, has been approved by the Commission.



CERTIFICATION

I hereby certify that the information contained herein is true and complete to the best of my knowledge and belief.

Joe R. Howard
 Name **Joe R. Howard**
 Position **Division Production Superintendent**
 Company **Coastal States Gas Producing Company**
 Date **January 9, 1969**

I hereby certify that the well location shown on this plat was plotted from field notes of actual surveys made by me or under my supervision, and that the same is true and correct to the best of my knowledge and belief.

Date Surveyed **8-6-68**
 Registered Professional Engineer and/or Land Surveyor

/s/ John W. West

Certificate No. **676**