

NEW MEXICO OIL CONSERVATION COMMISSION
SOUTHWEST NEW MEXICO PACKER LEAKAGE TEST

Operator The Superior Oil Company				Lease State "L"		Well No. 1	
Location of Well	Unit P	Sec 33	Twp 13-S	Rge 34-E	County Lea		
	Name of Reservoir or Pool		Type of Prod (Oil or Gas)	Method of Prod Flow, Art Lift	Prod. Medium (Tbg or Csg)	Choke Size	
Upper Compl	Undesignated Lower Wolfcamp		Oil	Flow	Tbg. 2-3/8"	3/4	
Lower Compl	Cerca Upper Pennsylvanian		Oil	Pump	Tbg. 2-3/8"		

FLOW TEST NO. 1
U. Penn - 1:30 PM on 12-17-68
Both zones shut-in at (hour, date): L. Wolfcamp - 5:00 PM on 11-18-68

	Upper Completion	Lower Completion
Well opened at (hour, date):	10:55 PM on 12-17-68	
Indicate by (X) the zone producing.....		X
Pressure at beginning of test.....	710	50
Stabilized? (Yes or No).....	Yes	Yes
Maximum pressure during test.....	710	70
Minimum pressure during test.....	705	50
Pressure at conclusion of test.....	705	50
Pressure change during test (Maximum minus Minimum).....	5	20
Was pressure change an increase or a decrease?..(Max. minus conclusion press)	Decrease	Decrease
Well closed at (hour, date):	Total Time On Production 9 hrs & 20 min.	
Oil Production	Gas Production	
During Test: 46 bbls; Grav. 43	During Test 40 MCF; GOR 870	
Remarks U. Penn (lower zone) is prod. with a beam pump which was installed 12-5-68. Lower Wolfcamp Zone had been shut in approx. 30 days prior to packer leakage testing.		

FLOW TEST NO. 2

	Upper Completion	Lower Completion
Well opened at (hour, date):	6:20 PM on 12-18-68	
Indicate by (X) the zone producing.....	X	
Pressure at beginning of test.....	30	340
Stabilized? (Yes or No).....	Yes	Yes
Maximum pressure during test.....	200	340
Minimum pressure during test.....	50	332
Pressure at conclusion of test.....	50	332
Pressure change during test (Maximum minus Minimum).....	150	8
Was pressure change an increase or a decrease?..(Max. minus conclusion press)	Decrease	Decrease
Well closed at (hour, date)	Total time on Production 14 hrs & 10 min.	
Oil Production	Gas Production	
During Test: 191 bbls; Grav. 44	During Test 248 MCF; GOR 1300	
Remarks		

I hereby certify that the information herein contained is true and complete to the best of my knowledge.

Approved **JAN 2 1969** 19
New Mexico Oil Conservation Commission

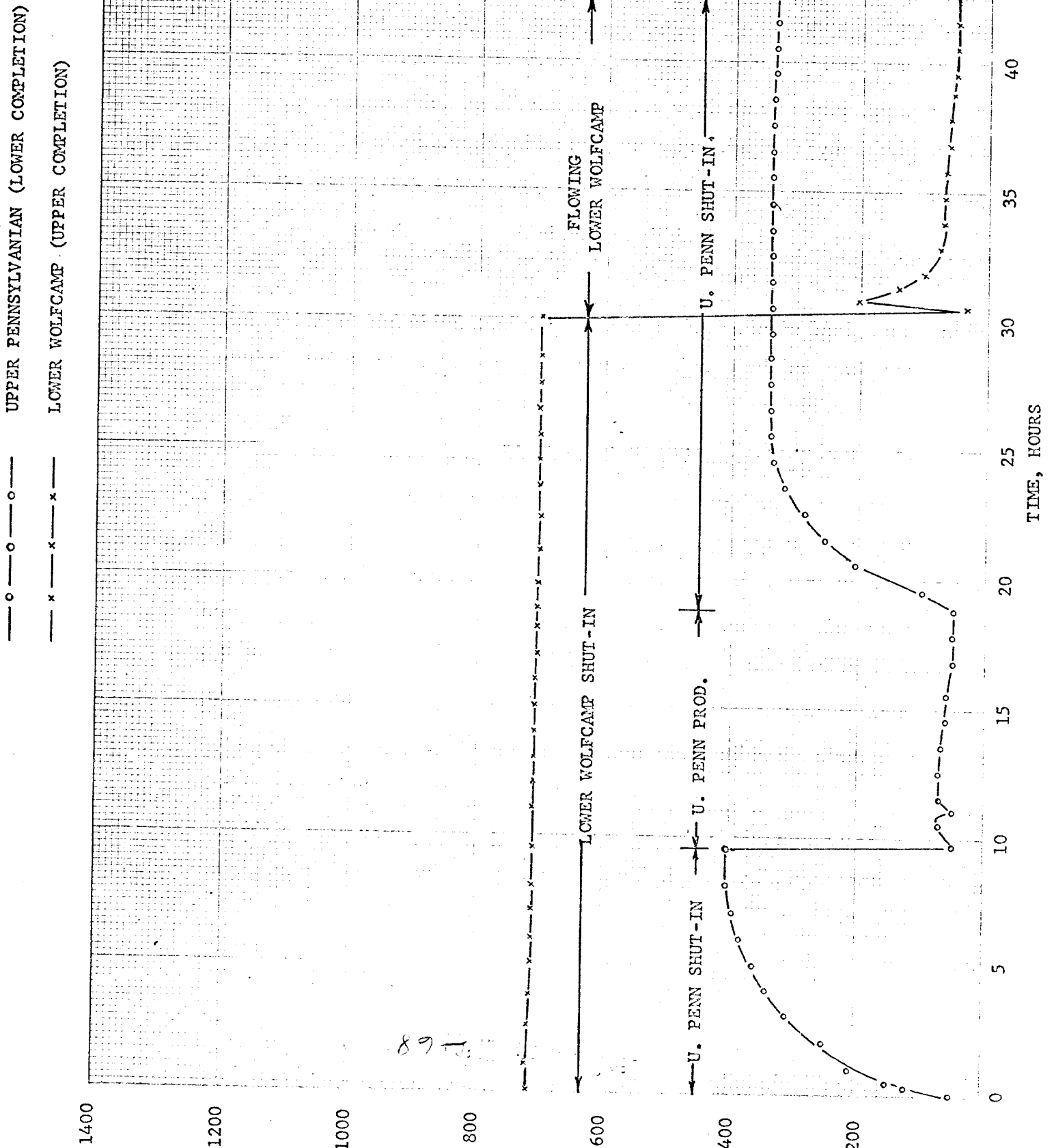
By *[Signature]*
Title

Operator THE SUPERIOR OIL COMPANY
By *[Signature]* D. Clay
Title Production Engineer
Date December 27, 1968

SOUTHEAST NEW MEXICO PACKER LEAKAGE TEST INSTRUCTIONS

1. A packer leakage test shall be commenced on a multiply completed well within seven days after actual completion of the well, and annually thereafter as prescribed by the order authorizing the multiple completion. Such tests shall also be commenced on all multiple completions within seven days following recompletion and/or chemical or fracture treatment, and whenever remedial work has been done on a well during which the packer or the tubing have been disturbed. Tests shall also be taken at any time that communication is suspected or when requested by the Commission.
2. At least 72 hours prior to the commencement of any packer leakage test, the operator shall notify the Commission in writing of the exact time the test is to be commenced. Offset operators shall also be so notified.
3. The packer leakage test shall commence when both zones of the dual completion are shut-in for pressure stabilization. Both zones shall remain shut-in until the well-head pressure in each has stabilized and for a minimum of two hours thereafter, provided however, that they need not remain shut-in more than 24 hours.
4. For Flow Test No. 1, one zone of the dual completion shall be produced at the normal rate of production while the other zone remains shut-in. Such test shall be continued until the flowing wellhead pressure has become stabilized and for a minimum of two hours thereafter, provided however, that the flow test need not continue for more than 24 hours.

5. Following completion of Flow Test No. 1, the well shall again be shut-in, in accordance with Paragraph 3 above.
6. Flow Test No. 2 shall be conducted even though no leak was indicated during Flow Test No. 1. Procedure for Flow Test No. 2 is to be the same as for Flow Test No. 1 except that the previously produced zone shall remain shut-in while the previously shut-in zone is produced.
7. All pressures, throughout the entire test, shall be continuously measured and recorded with recording pressure gauges, the accuracy of which shall be checked with a deadweight tester at least twice, once at the beginning and once at the end, of each flow test.
8. The results of the above-described tests shall be filed in triplicate within 15 days after completion of the test. Tests shall be filed with the appropriate District Office of the New Mexico Oil Conservation Commission on Southeast New Mexico Packer Leakage Test Form Revised 11-1-59, together with the original pressure recording gauge charts with all the deadweight pressures which were taken indicated thereon. In lieu of filing the aforesaid charts, the operator may construct a pressure versus time curve for each zone of each test, indicating thereon all pressure changes which may be reflected by the gauge charts as well as all deadweight pressure readings which were taken. If the pressure curve is submitted, the original chart must be permanently filed in the operator's office. Form C-118 shall also accompany the Packer Leakage Test Form when the test period coincides with a gas-oil ratio test period.



FLOW TEST NO. 1

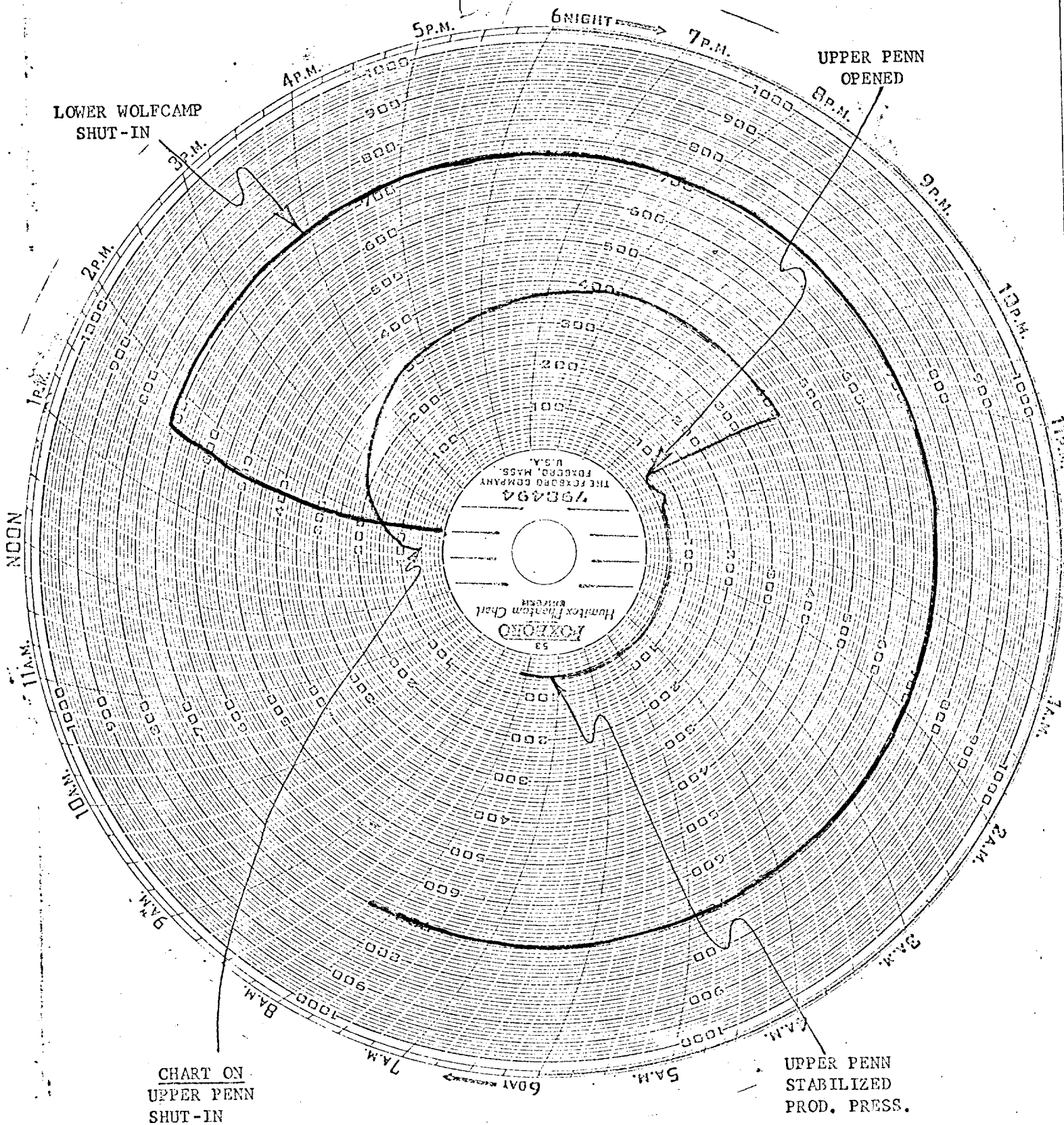
PACKER LEAKAGE TEST

SUPERIOR STATE "L" NO. 1
CERCA(UPPER PENN) FIELD
LEA COUNTY, NEW MEXICO

RED: LOWER WOLFCAMP (UPPER COMPL.)
BLUE: UPPER PENN (LOWER COMPL.)

CHART ON: 1:30 PM ON 12/17/68 OFF: 8:15 AM ON 12/18/68

UPPER PENN - PRODUCING
LOWER WOLFCAMP - SHUT - IN



FLOW TEST NO. 2

PACKER LEAKAGE TEST

SUPERIOR STATE "L" NO. 1
CERCA(UPPER PENN) FIELD
LEA COUNTY, NEW MEXICO

RED: LOWER WOLFCAMP (UPPER COMPL.)
BLUE: UPPER PENN (LOWER COMPL.)

CHART ON: 8:15 AM ON 12/18/68 OFF: 8:30 AM ON 12/19/68

UPPER PENN - SHUT-IN
LOWER WOLFCAMP - PRODUCING
LOWER WOLFCAMP
SHUT-IN

UPPER PENN
STABILIZED
SHUT-IN

LOWER
WOLFCAMP
OPENED

CHART ON
UPPER PENN
SHUT-IN

LOWER WOLFCAMP
STABILIZED FLOWING PRESS.

