

NE EXICO OIL CONSERVATION COMMISSION
WELL LOCATION AND ACREAGE DEDICATION PLAT

All distances must be from the outer boundaries of the Section

HOE Form C-102
Supercedes C-128
Effective 1-65
OCT 14 3 22 PM '68
1

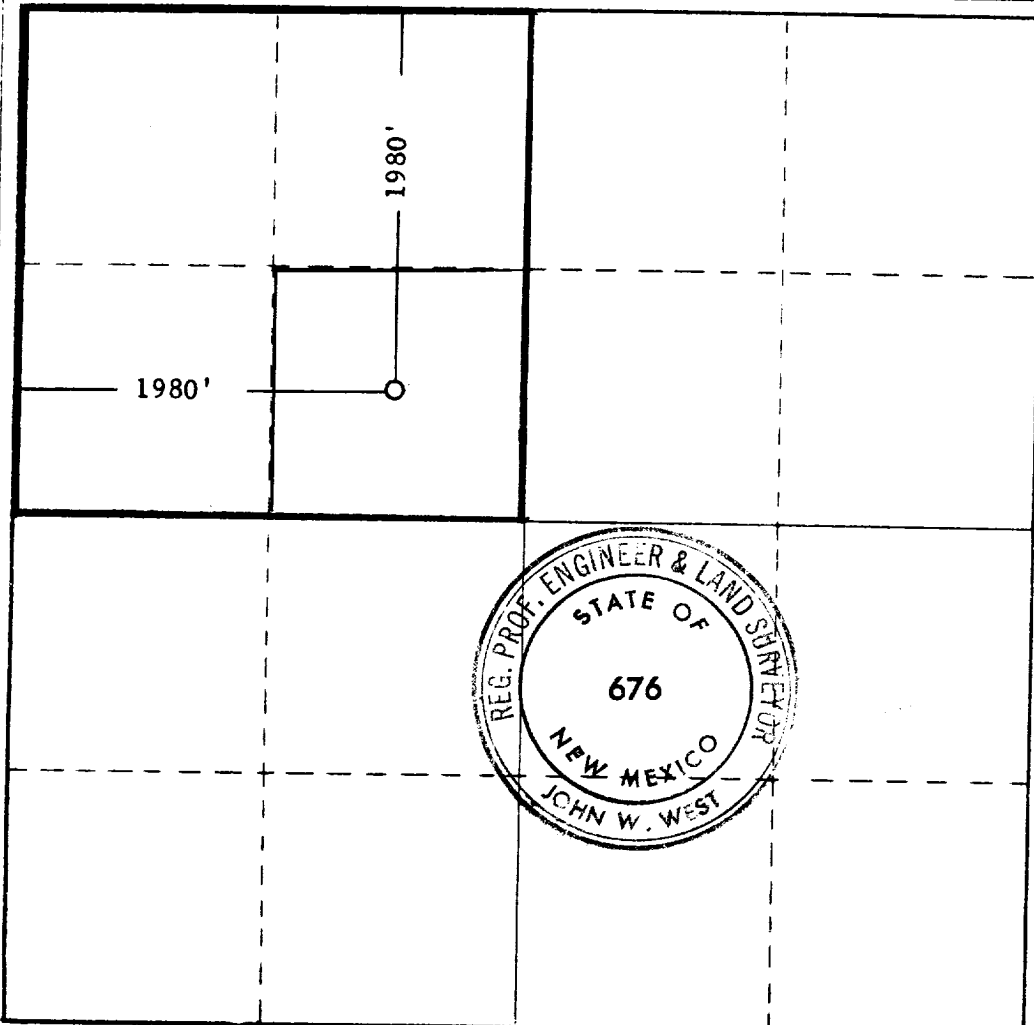
Operator COASTAL STATES GAS PRODUCING CO.			Lease CHAMBERS			Well No.
Unit Letter F	Section 29	Township 13 SOUTH	Range 33 EAST	County LEA		
Actual Footage Location of Well:						
1980 feet from the		NORTH line and	1980 feet from the		WEST line	
Ground Level Elev. 4259.7	Producing Formation Penn		Pool Undesignated		Dedicated Acreage: 40 Acres	

1. Outline the acreage dedicated to the subject well by colored pencil or hachure marks on the plat below.
2. If more than one lease is dedicated to the well, outline each and identify the ownership thereof (both as to working interest and royalty).
3. If more than one lease of different ownership is dedicated to the well, have the interests of all owners been consolidated by communitization, unitization, force-pooling, etc?

☐ Yes ☐ No If answer is "yes," type of consolidation _____

If answer is "no," list the owners and tract descriptions which have actually been consolidated. (Use reverse side of this form if necessary.) _____

No allowable will be assigned to the well until all interests have been consolidated (by communitization, unitization, forced-pooling, or otherwise) or until a non-standard unit, eliminating such interests, has been approved by the Commission.



CERTIFICATION

I hereby certify that the information contained herein is true and complete to the best of my knowledge and belief.

Joe R. Howard
Name **Joe R. Howard**

Position **Division Production Superintendent**

Company **Coastal States Gas Producing Company**

Date **October 14, 1968**

I hereby certify that the well location shown on this plat was plotted from field notes of actual surveys made by me or under my supervision, and that the same is true and correct to the best of my knowledge and belief.

Date Surveyed

OCTOBER 10, 1968

Registered Professional Engineer and/or Land Surveyor

John W. West
Certificate No. **676**

