

COUNTY LEA FIELD Edmon, N. STATE NM 30-025-22940

OPR COASTAL STATES GAS PRODUCING CO. MAP

4 Federal "20"

Sec 20, T-13-S, R-33-E

CO-ORD

2080' FNL, 2080' FEL of Sec.

Spd 12-28-68

Comp 1-26-69

CLASS

EL

CSG & SX - TUBING

13 3/8" at 375' w/400 SX

8 5/8" at 4075' w/300 SX

5 1/2" at 9854' w/200 SX

LOGS EL GR RA IND HC A

FORMATION	DATUM	FORMATION	DATUM

TD 9854'

IP (Pennsylvanian) Perf 9713-32' F 335 BOPD + 50 BW. Pot based on 24 hr test thru 24/64" chk; TP 420#

Distribution limited and publication prohibited by subscribers' agreement.
Reproduction rights reserved by Williams & Lee Scouting Service, Inc.

CONT. Sharp
DATE

PROP DEPTH 10,000' TYPE

F.R. 1-2-69
PD 10,000' (Pennsylvanian)
Contractor - Sharp
2-6-69 AMEND FIELD NAME, Formerly reported as
Iazy J.
1-7-69 Drlg. 5526'
1-14-69 Drlg. 7963'
1-21-69 Drlg. 9710'
1-28-69 TD 9854'; Swbg
DST 9700-30', open 2 hrs 15 min, GTS 3 min,
OTS 14 min, rec 36 BO, 1 hr ISIP 2543#,
FP 1373-2263#, 1 hr 30 min FSIP 2543#
Perf 9713-15', 9721-32' w/1 SPF
Acid (9713-32') 1000 gals (15%) + 1000 gals (3%)
2-3-69 TD 9854'; COMPLETE
2-6-69 COMPLETION REPORTED

NEW MEXICO OIL CONSERVATION COMMISSION
WELL LOCATION AND ACREAGE DEDICATION PLAT

Form C-102
Superseded by C-103
Effective 1-1-65

All distances must be from the outer boundaries of the Section.

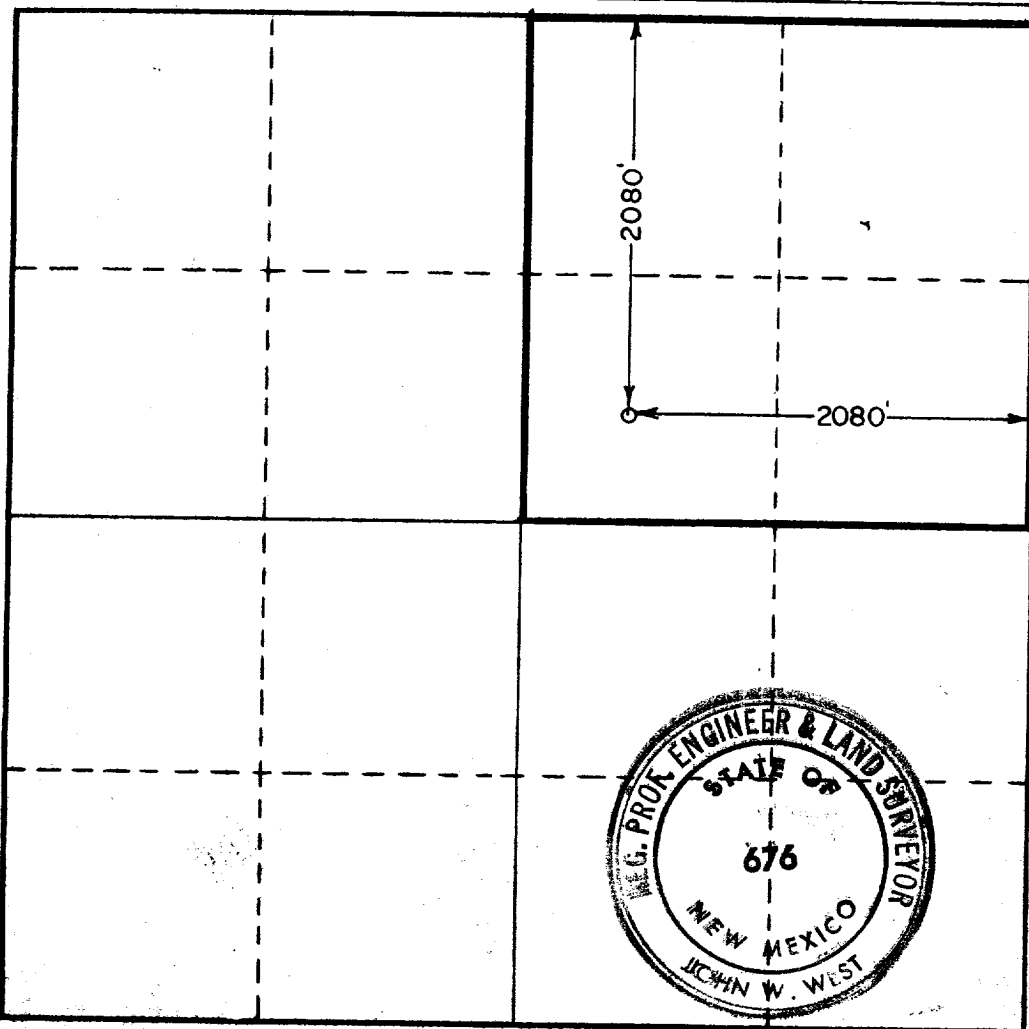
Operator COASTAL STATES GAS PRODUCING CO.			Lease FEDERAL 2000		Well No. 4
Unit Letter G	Section 20	Township 13 SOUTH	Range 33 EAST	County LEA	
Actual Footage Location of Well: 2080 feet from the NORTH line and 2080 feet from the EAST line					
Ground Level Elev. 4259.5	Producing Formation Penn		Pool No. Baum (Up. Penn)	Dedicated Acreage: 160 Acres	

1. Outline the acreage dedicated to the subject well by colored pencil or hachure marks on the plat below.
2. If more than one lease is dedicated to the well, outline each and identify the ownership thereof (both as to working interest and royalty).
3. If more than one lease of different ownership is dedicated to the well, have the interests of all owners been consolidated by communitization, unitization, force-pooling, etc?

☐ Yes ☐ No If answer is "yes," type of consolidation _____

If answer is "no," list the owners and tract descriptions which have actually been consolidated. (Use reverse side of this form if necessary.) _____

No allowable will be assigned to the well until all interests have been consolidated (by communitization, unitization, forced-pooling, or otherwise) or until a non-standard unit, eliminating such interests, has been approved by the Commission.



CERTIFICATION

I hereby certify that the information contained herein is true and complete to the best of my knowledge and belief.

Joe R. Howard
Name **Joe R. Howard**

Position **Division Production Superintendent**

Company **Coastal States Gas Producing Company**

Date
January 29, 1969

I hereby certify that the well location shown on this plat was plotted from field notes of actual surveys made by me or under my supervision, and that the same is true and correct to the best of my knowledge and belief.

Date Surveyed
DECEMBER 19, 1968

Registered Professional Engineer and/or Land Surveyor

John W. West
Certificate No. **676**

