

**NEW MEXICO OIL CONSERVATION COMMISSION
WELL LOCATION AND ACREAGE DEDICATION PLAT**

Form C-102
Supersedes C-12
Effective 1-1-65

HOBBS OFFICE O. C. C.
All distances must be from the outer boundaries of the Section.

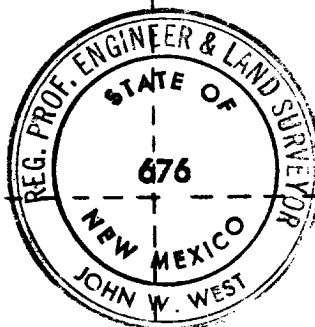
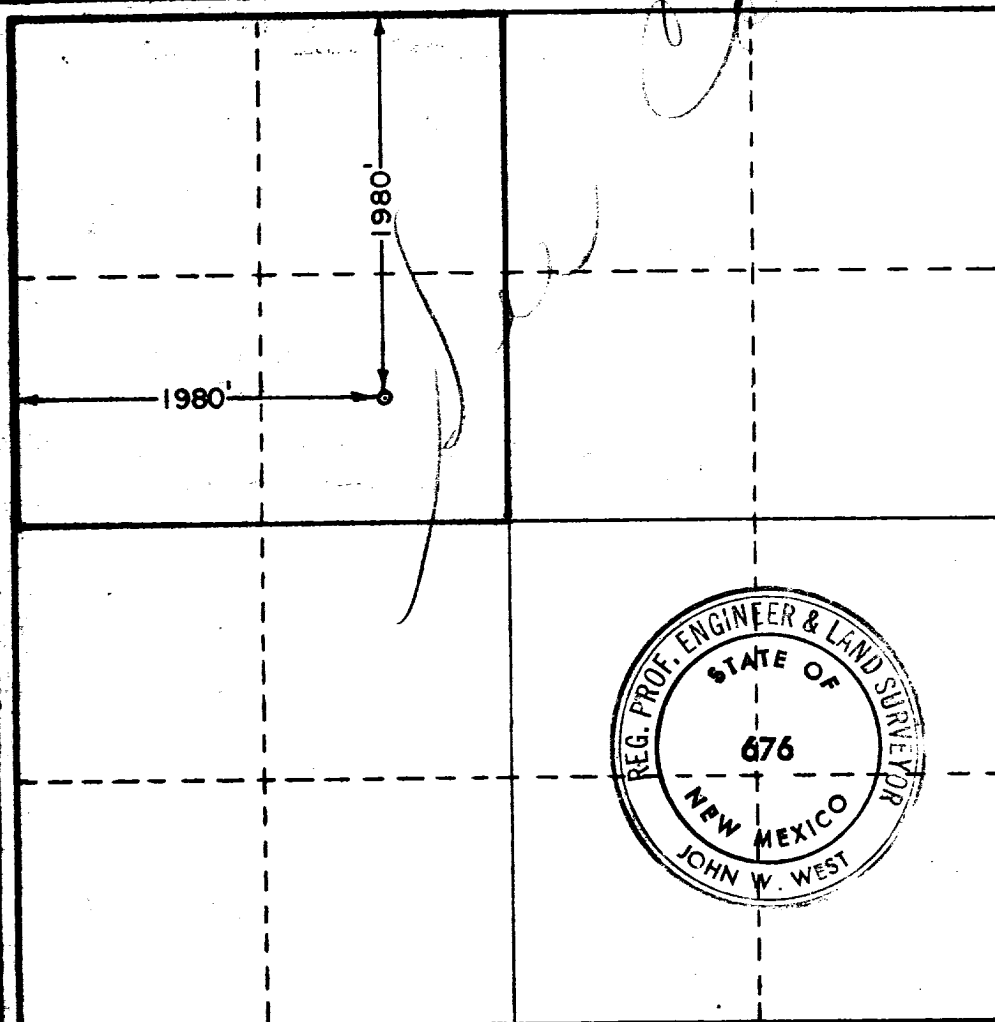
Operator GETTY OIL COMPANY			Lease JUL 9 10 42 AM '69		Well No. 2
Unit Letter F	Section 12	Township 14 SOUTH	Range 32 EAST	County LEA	
Actual Footage Location of Well: <div style="display: flex; justify-content: space-between;"> 1980 feet from the NORTH line and 1980 feet from the WEST line </div>					
Ground Level Elev. 4280.4	Producing Formation Wash. Sand	Pool UNDESIGNATED	Dedicated Acreage 2.00 Acres		

1. Outline the acreage dedicated to the subject well by colored pencil or hachure marks on the plat below.
2. If more than one lease is dedicated to the well, outline each and identify the ownership thereof (both as to working interest and royalty).
3. If more than one lease of different ownership is dedicated to the well, have the interests of all owners been consolidated by communitization, unitization, force-pooling, etc?

☒ Yes ☐ No If answer is "yes," type of consolidation Force Pooling

If answer is "no," list the owners and tract descriptions which have actually been consolidated. (Use reverse side of this form if necessary.) _____

No allowable will be assigned to the well until all interests have been consolidated (by communitization, unitization, forced-pooling, or otherwise) or until a non-standard unit, eliminating such interests, has been approved by the Commission.



CERTIFICATION

I hereby certify that the information contained herein is true and complete to the best of my knowledge and belief.

ORIGINAL SIGNED BY:

G. L. Wade

Name G. L. Wade
Position Area Eng.
Company Getty Oil Co.
Date July 3, 1969

I hereby certify that the well location shown on this plat was plotted from field notes of actual surveys made by me or under my supervision, and that the same is true and correct to the best of my knowledge and belief.

Date Surveyed JULY 3, 1969
Registered Professional Engineer and/or Land Surveyor John W. West
Certificate No. 676

