

NEW MEXICO OIL CONSERVATION COMMISSION  
WELL LOCATION AND ACREAGE DEDICATION PLAT

Form C-102  
Supersedes C-120  
Effective 1-4-65

All distances must be from the outer boundaries of the Section.

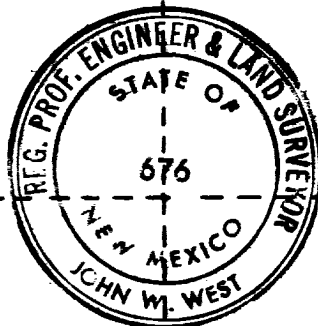
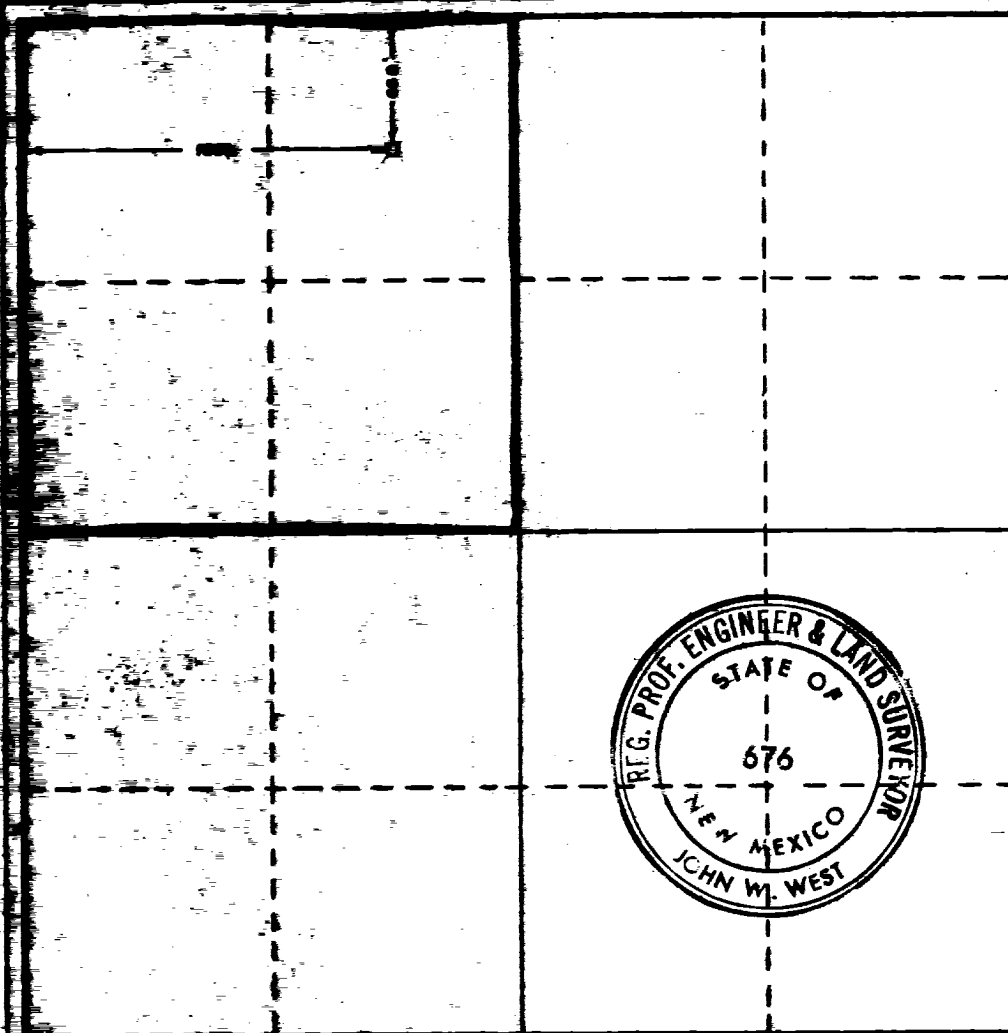
Operator <b>UNION TEXAS PETROLEUM CORP.</b>		STATE <b>1</b>	
Unit Letter <b>C</b>	Section <b>1</b>	Township <b>14 SOUTH</b>	Range <b>32 EAST</b>
County <b>LEA</b>			
Actual Footage Location of Well: <b>1980 WEST</b> feet from the <b>WEST</b> line			
Original Legal Desc: <b>4295</b>	Producing Formation <b>Bough "C"</b>	Pool <b>Undesignated</b>	Dedicated Acreage: <b>NW/4 - 160</b> Acres

1. Outline the acreage dedicated to the subject well by colored pencil or hatchure marks on the plat below.
2. If more than one lease is dedicated to the well, outline each and identify the ownership thereof (both as to working interest and royalty).
3. If more than one lease of different ownership is dedicated to the well, have the interests of all owners been consolidated by communitization, unitization, force-pooling, etc?

☐ Yes ☐ No If answer is "yes," type of consolidation \_\_\_\_\_

If answer is "yes," list the covenants and trust descriptions which have actually been consolidated. (Use reverse side of this form if necessary.)

No acreage will be assigned to the well until all interests have been consolidated (by communitization, unitization, force-pooling, or otherwise) or until a non-standard unit, eliminating such interests, has been approved by the Commission.



CERTIFICATION

I hereby certify that the information contained herein is true and complete to the best of my knowledge and belief.

Name  
**R. W. Manry**

Position  
**District Drlg. Supt.**

Company  
**Union Texas Petroleum Corp.**

Date  
**9-5-69**

I hereby certify that the well location shown on this plat was plotted from field notes of actual surveys made by me or under my supervision, and that the same is true and correct to the best of my knowledge and belief.

Date Surveyed  
**SEPTEMBER 3, 1969**

Registered Professional Engineer and/or Land Surveyor

**John W. West**

Certificate No. **676**