

NO. OF COPIES RECEIVED	
DISTRIBUTION	
SANTA FE	
FILE	
U.S.G.S.	
LAND OFFICE	
OPERATOR	

5A. Indicate Type of Lease  
STATE ☒ FEE ☐

5. State Oil & Gas Lease No.  
LG-3716

APPLICATION FOR PERMIT TO DRILL, DEEPEN, OR PLUG BACK

1a. Type of Work  
b. Type of Well  
OIL WELL ☒ GAS WELL ☐ OTHER ☐  
DRILL ☐ RE-ENTRY ☒ DEEPEN ☐ PLUG BACK ☐  
SINGLE ZONE ☐ MULTIPLE ZONE ☐

7. Unit Agreement Name

8. Farm or Lease Name

Midwest Hightower ADS St.

2. Name of Operator

Yates Petroleum Corporation

9. Well No.

1

3. Address of Operator

207 South Fourth Street - Artesia, NM 88210

10. Field and Pool, or Wildcat

Wildcat

4. Location of Well  
UNIT LETTER M LOCATED 660 FEET FROM THE South LINE

AND 660 FEET FROM THE West LINE OF SEC. 31 TWP. 12S RGC. 33E NADPM

12. County

Lea

19. Proposed Depth 10500'	19A. Formation Canyon	20. Rotary or C.T. Reverse Unit
21. Elevations (Show whether DF, RT, etc.) 4305.4' GR	21A. Kind & Status Plug. Bond Blanket	21B. Drilling Contractor Undesignated
		22. Approx. Date Work will start ASAP

PROPOSED CASING AND CEMENT PROGRAM

SIZE OF HOLE	SIZE OF CASING	WEIGHT PER FOOT	SETTING DEPTH	SACKS OF CEMENT	EST. TOP
15"	11-3/4"	31.2#	318'	400 - circulate	In place
11"	8-5/8"	24 & 32#	3980'	400 sacks	In place
7-7/8"	5-1/2"	17 & 20#	TD	As necessary	

This well was originally drilled by Midwest Oil Corporation in November, 1969, as their West Hightower Unit #1. It was drilled to a total depth of 10500' and plugged and abandoned on December 31, 1969. Yates Petroleum Corporation proposed to drill out plugs at surface, 3895', 5265', 7495', 8905', 9391' and 10412'. If commercial, will run 5-1/2" casing to TD and cement with adequate cover, perforate and stimulate as needed for production. Will test the Canyon and intermediate formations.

IN ABOVE SPACE DESCRIBE PROPOSED PROGRAM; IF PROPOSAL IS TO DEEPEN OR PLUG BACK, GIVE DATA ON PRESENT PRODUCTIVE ZONE AND PROPOSED NEW PRODUCTIVE ZONE. GIVE BLOWOUT PREVENTER PROGRAM, IF ANY.

I hereby certify that the information above is true and complete to the best of my knowledge and belief.

Signed Clifton A. May Title Regulatory Agent Date January 7, 1986

(This space for State Use)

ORIGINAL SIGNED BY JERRY BEXTON  
DISTRICT I SUPERVISOR

APPROVED BY \_\_\_\_\_ TITLE \_\_\_\_\_ DATE JAN 9 - 1986

CONDITIONS OF APPROVAL, IF ANY:

RECEIVED  
JAN 8 - 1986  
O.C.D.  
HOBBS OFFICE

OIL CONSERVATION DIVISION

STATE OF NEW MEXICO  
ENERGY AND MINERALS DEPARTMENT

P. O. BOX 2058  
SANTA FE, NEW MEXICO 87501

Form C-102  
Revised 10-1-78

All distances must be from the outer boundaries of the Section.

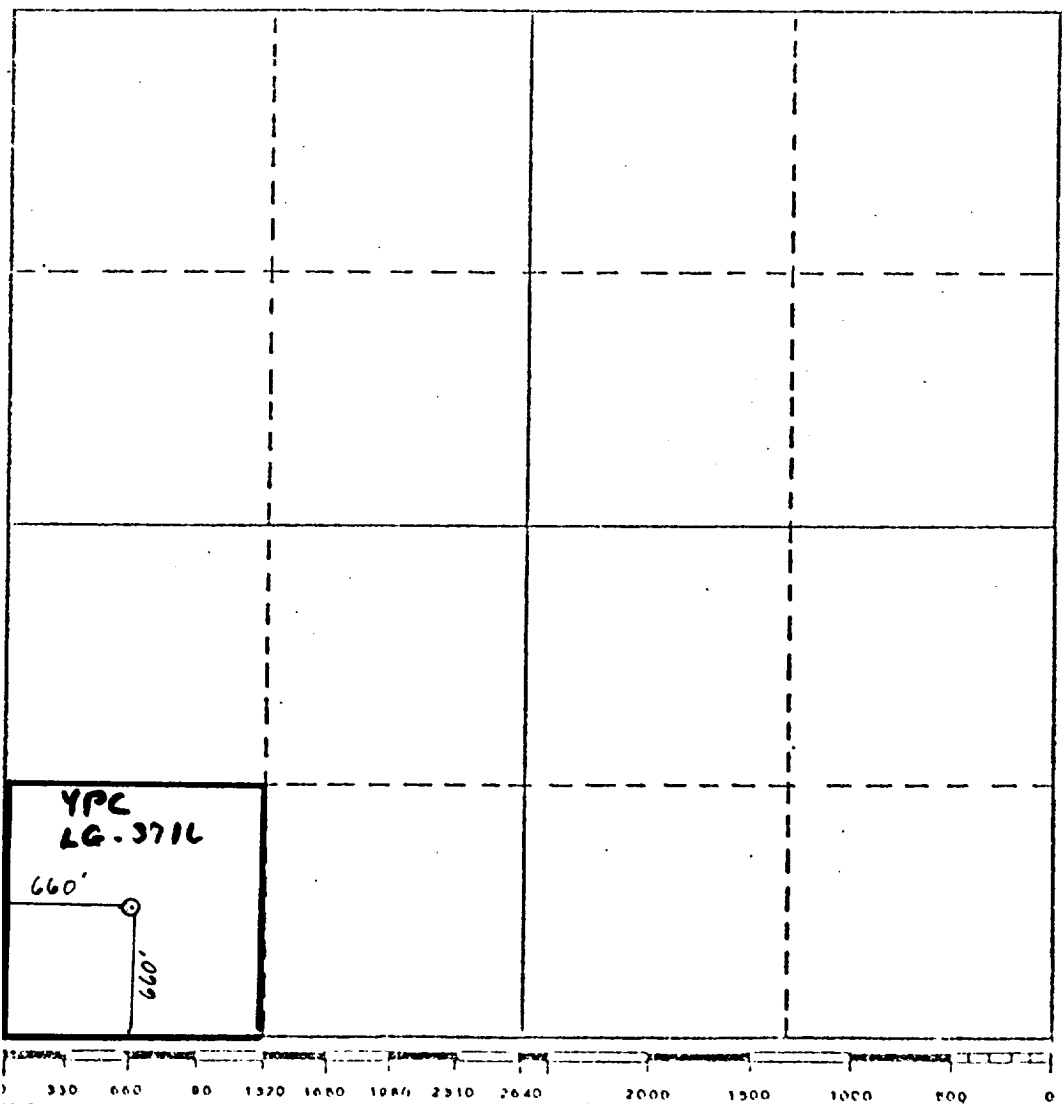
Operator YATES PETROLEUM CORPORATION			Lease MIDWEST HIGHTOWER ADS STATE		Well No. 1
Unit Letter M	Section 31	Township 12 South	Range 33 East	County Lea	
Actual Postage Location of Well: 660 feet from the South line and 660 feet from the West line					
Ground Level Elev. 4305.4'	Producing Formation CANYON		Pool WILDCAT		Dedicated Acreage: 40 Acres

1. Outline the acreage dedicated to the subject well by colored pencil or hachure marks on the plat below.
2. If more than one lease is dedicated to the well, outline each and identify the ownership thereof (both as to working interest and royalty).
3. If more than one lease of different ownership is dedicated to the well, have the interests of all owners been consolidated by communitization, unitization, force-pooling, etc?

☐ Yes ☐ No If answer is "yes," type of consolidation \_\_\_\_\_

If answer is "no," list the owners and tract descriptions which have actually been consolidated. (Use reverse side of this form if necessary.) \_\_\_\_\_

No allowable will be assigned to the well until all interests have been consolidated (by communitization, unitization, forced-pooling, or otherwise) or until a non-standard unit, eliminating such interests, has been approved by the Division.



CERTIFICATION	
I hereby certify that the information contained herein is true and complete to the best of my knowledge and belief.	
Name	Clifton R. May
Position	Regulatory Agent
Company	Yates Petroleum Corporation
Date	January 7, 1986
I hereby certify that the well location shown on this plat was plotted from field notes of actual surveys made by me or under my supervision, and that the same is true and correct to the best of my knowledge and belief.	
Date Surveyed	REFER TO ORIGINAL PLAT
Registered Professional Engineer and/or Land Surveyor	
Certificate No.	

RECEIVED  
JAN 8 - 1986  
O.C. OFFICE  
MOBBIS OFFICE

All distances are from the outer boundaries of the Section

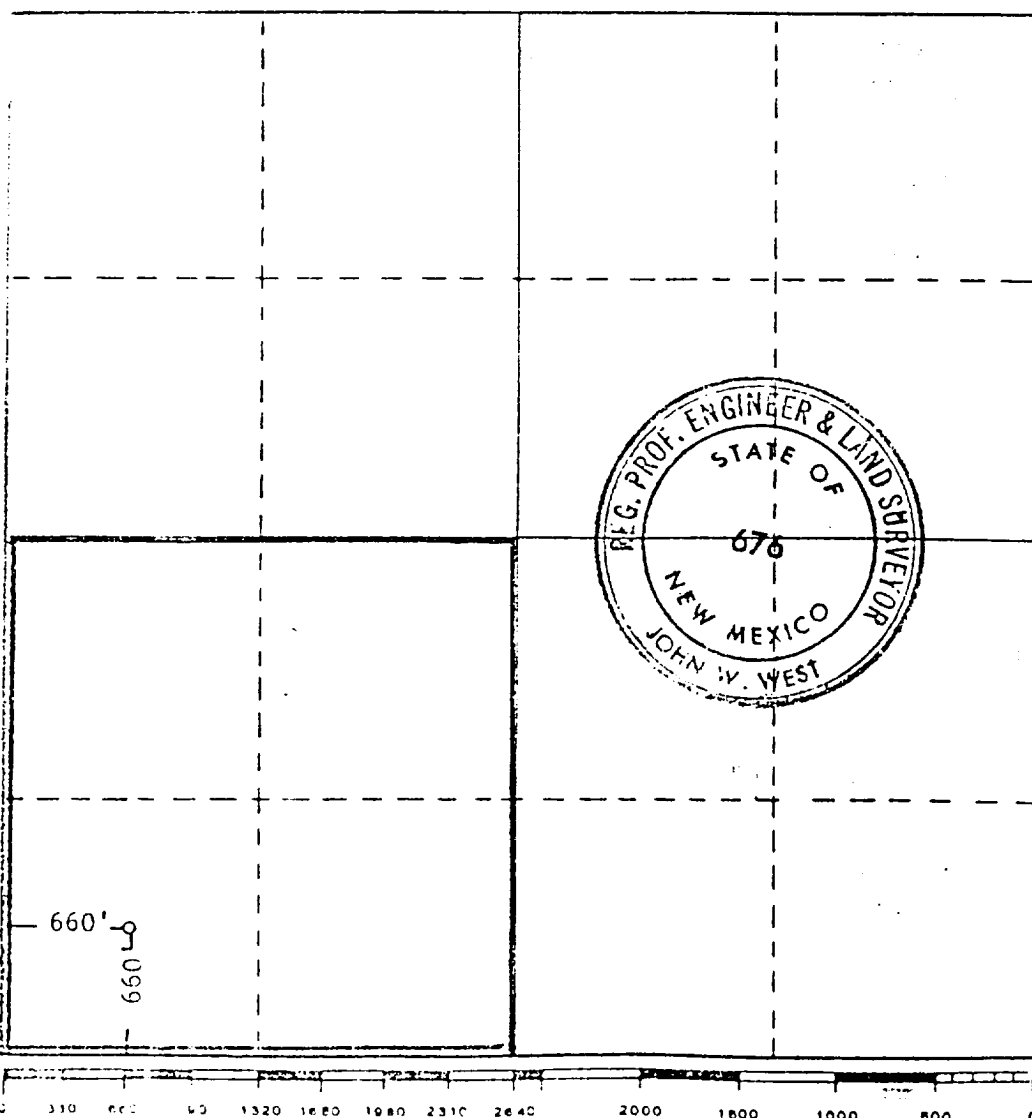
MIDWEST OIL CORPORATION			WEST HIGHTOWER UNIT		Well No. 1	
Section	31	12.5	Range	33 EAST	County	LEA
660 feet from the SOUTH		660 feet from the WEST		Line		
Land Type: Easement	PENNINSULANTIAN		UN-SIGNATURED <i>W. West</i>		Dedicated Acreage: 40 SW/4 - 160 Acres	

1. Outline the acreage dedicated to the subject well by colored pencil or hatchure marks on the plat below.
2. If more than one lease is dedicated to the well, outline each and identify the ownership thereof (both as to working interest and royalty).
3. If more than one lease of different ownership is dedicated to the well, have the interests of all owners been consolidated by communitization, unitization, force-pooling, etc?

☐ Yes ☐ No If answer is "yes," type of consolidation \_\_\_\_\_

If answer is "no," list the owners and tract descriptions which have actually been consolidated. (Use reverse side of this form if necessary.) \_\_\_\_\_

No allowable will be assigned to the well until all interests have been consolidated (by communitization, unitization, forced-pooling, or otherwise) or until a non-standard unit, eliminating such interests, has been approved by the Commission.



## CERTIFICATION

I hereby certify that the information contained herein is true and complete to the best of my knowledge and belief.

*Carolyn Turner*  
Name

Carolyn Turner

Position

Production Clerk

Company

Midwest Oil Corporation

Date

11-6-69

I hereby certify that the well location shown on this plat was plotted from field notes of actual surveys made by me or under my supervision, and that the same is true and correct to the best of my knowledge and belief.

Date Surveyed

NOVEMBER 5, 1969

Registered Professional Engineer  
and/or Land Surveyor

*John W West*  
Certificate No. 676

RECEIVED  
JAN 8 - 1986  
O.C.D. OFFICE  
HOBBS OFFICE