

N MEXICO OIL CONSERVATION COMMISS
WELL LOCATION AND ACREAGE DEDICATION PLAT

Form C-102
Supersedes C-128
Effective 1-1-65

All distances must be from the outer boundaries of the Section.

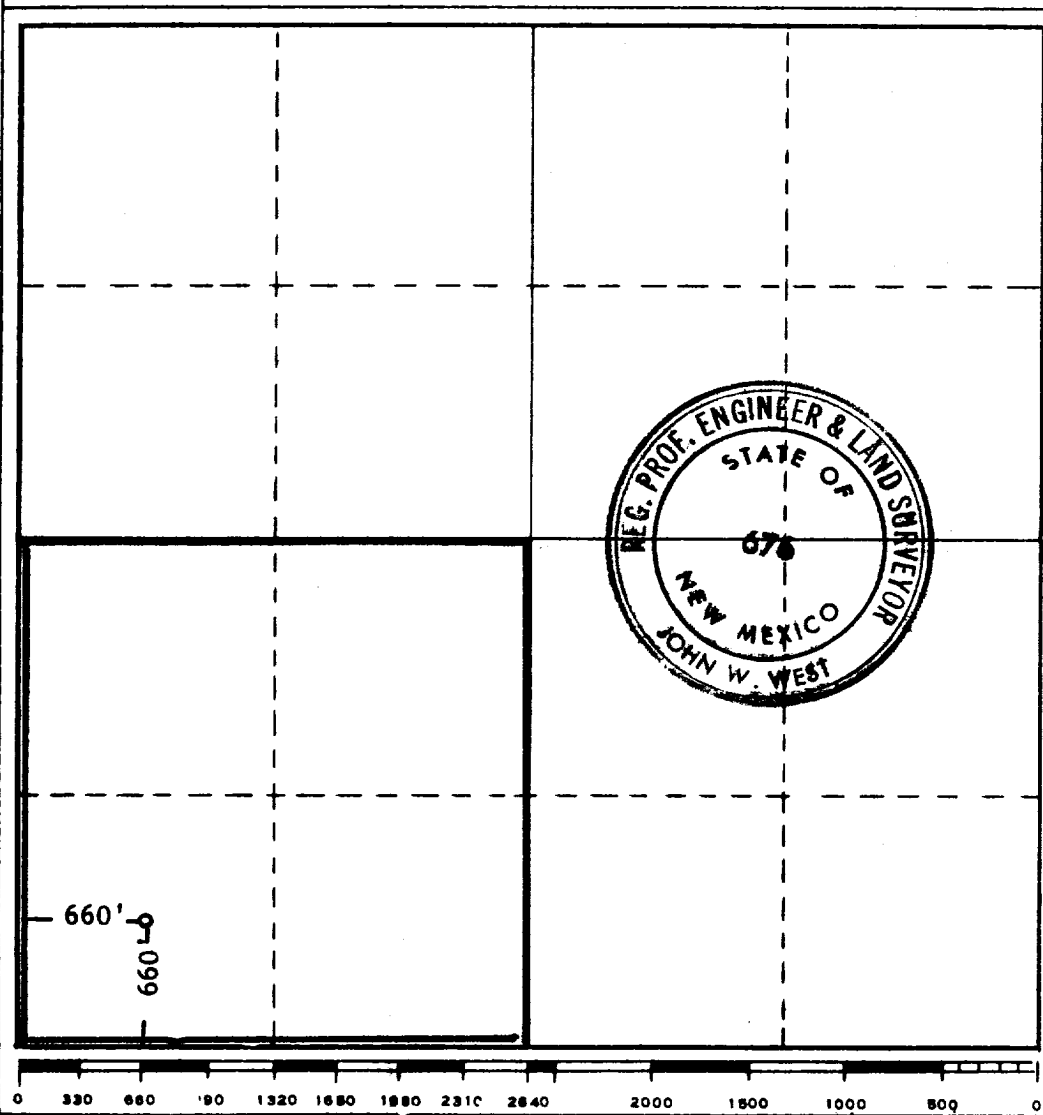
Operator MIDWEST OIL CORPORATION			Lease WEST HIGHTOWER UNIT		Well No. 1
Unit Letter M	Section 31	Township 12 SOUTH	Range 33 EAST	County LEA	
Actual Footage Location of Well: 660 feet from the SOUTH line and 660 feet from the WEST line					
Ground Level Elev. Unknown	Producing Formation PENNSYLVANIAN	Pool Wiscat		Dedicated Acreage: 40 50/4 100 Acres	

1. Outline the acreage dedicated to the subject well by colored pencil or hachure marks on the plat below.
2. If more than one lease is dedicated to the well, outline each and identify the ownership thereof (both as to working interest and royalty).
3. If more than one lease of different ownership is dedicated to the well, have the interests of all owners been consolidated by communitization, unitization, force-pooling, etc?

☐ Yes ☐ No If answer is "yes," type of consolidation _____

If answer is "no," list the owners and tract descriptions which have actually been consolidated. (Use reverse side of this form if necessary.) _____

No allowable will be assigned to the well until all interests have been consolidated (by communitization, unitization, forced-pooling, or otherwise) or until a non-standard unit, eliminating such interests, has been approved by the Commission.



CERTIFICATION	
I hereby certify that the information contained herein is true and complete to the best of my knowledge and belief.	
Name	Carolyn Turner
Position	Production Clerk
Company	Midwest Oil Corporation
Date	11-4-69
I hereby certify that the well location shown on this plat was plotted from field notes of actual surveys made by me or under my supervision, and that the same is true and correct to the best of my knowledge and belief.	
Date Surveyed	NOVEMBER 5, 1969
Registered Professional Engineer and/or Land Surveyor John W West	
Certificate No.	676

EL

607/01 - 0008
98-LC-6