

APPROVED BY [Signature] TITLE _____ DATE _____

CONDITIONS OF APPROVAL, IF ANY:

NEW MEXICO OIL CONSERVATION COMMISSION
WELL LOCATION AND ACREAGE DEDICATION PLAT

Form C-102
Supersedes C-128
Effective 1-1-65

All distances must be from the outer boundaries of the Section.

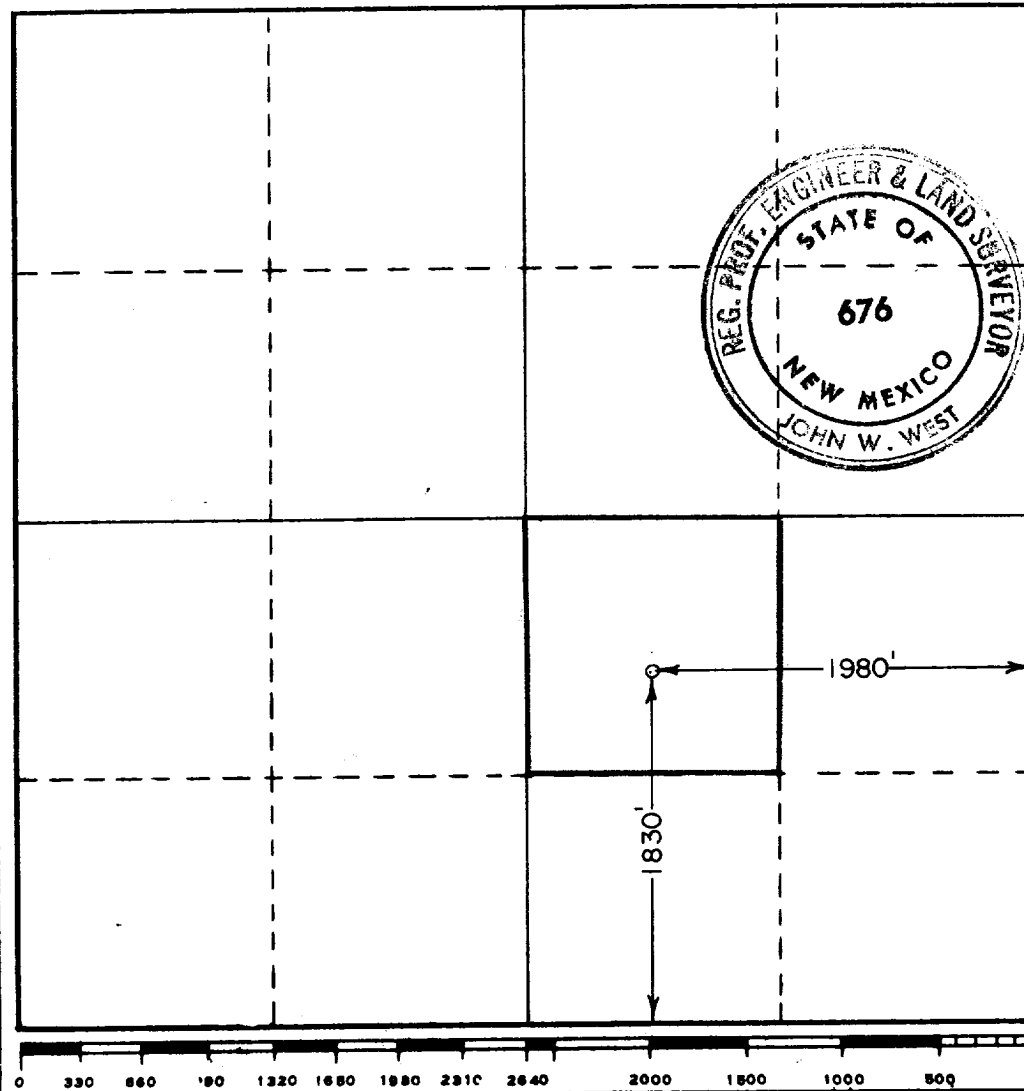
Operator LONE STAR PRODUCING CO.			Lease NEW MEXICO "85" STATE		Well No. 1
Unit Letter J	Section 28	Township 14 SOUTH	Range 34 EAST	County LEA	
Actual Footage Location of Well: 1830 feet from the SOUTH line and 1980 feet from the EAST line					
Ground Level Elev. 4121.2	Producing Formation Saunders Lime		Pool Wildcat UNDESIGNATED	Dedicated Acreage: 40 Acres	

1. Outline the acreage dedicated to the subject well by colored pencil or hatchure marks on the plat below.
2. If more than one lease is dedicated to the well, outline each and identify the ownership thereof (both as to working interest and royalty).
3. If more than one lease of different ownership is dedicated to the well, have the interests of all owners been consolidated by communitization, unitization, force-pooling, etc?

☐ Yes ☐ No If answer is "yes," type of consolidation N.A.

If answer is "no," list the owners and tract descriptions which have actually been consolidated. (Use reverse side of this form if necessary.) N.A.

No allowable will be assigned to the well until all interests have been consolidated (by communitization, unitization, forced-pooling, or otherwise) or until a non-standard unit, eliminating such interests, has been approved by the Commission.



CERTIFICATION

I hereby certify that the information contained herein is true and complete to the best of my knowledge and belief.

Name C. R. Ramsey
Position Dist. Prod. Superintendent
Company Lone Star Producing Company
Date April 2, 1970

I hereby certify that the well location shown on this plat was plotted from field notes of actual surveys made by me or under my supervision, and that the same is true and correct to the best of my knowledge and belief.

Date Surveyed MARCH 31, 1970
Registered Professional Engineer and/or Land Surveyor John W. West

Certificate No. 676