

NEW MEXICO OIL CONSERVATION COMMISSION
WELL LOCATION AND ACREAGE DEDICATION PL

Form C-102
Supersedes C-128
Effective 1-1-65

All distances must be from the outer boundaries of the Section.

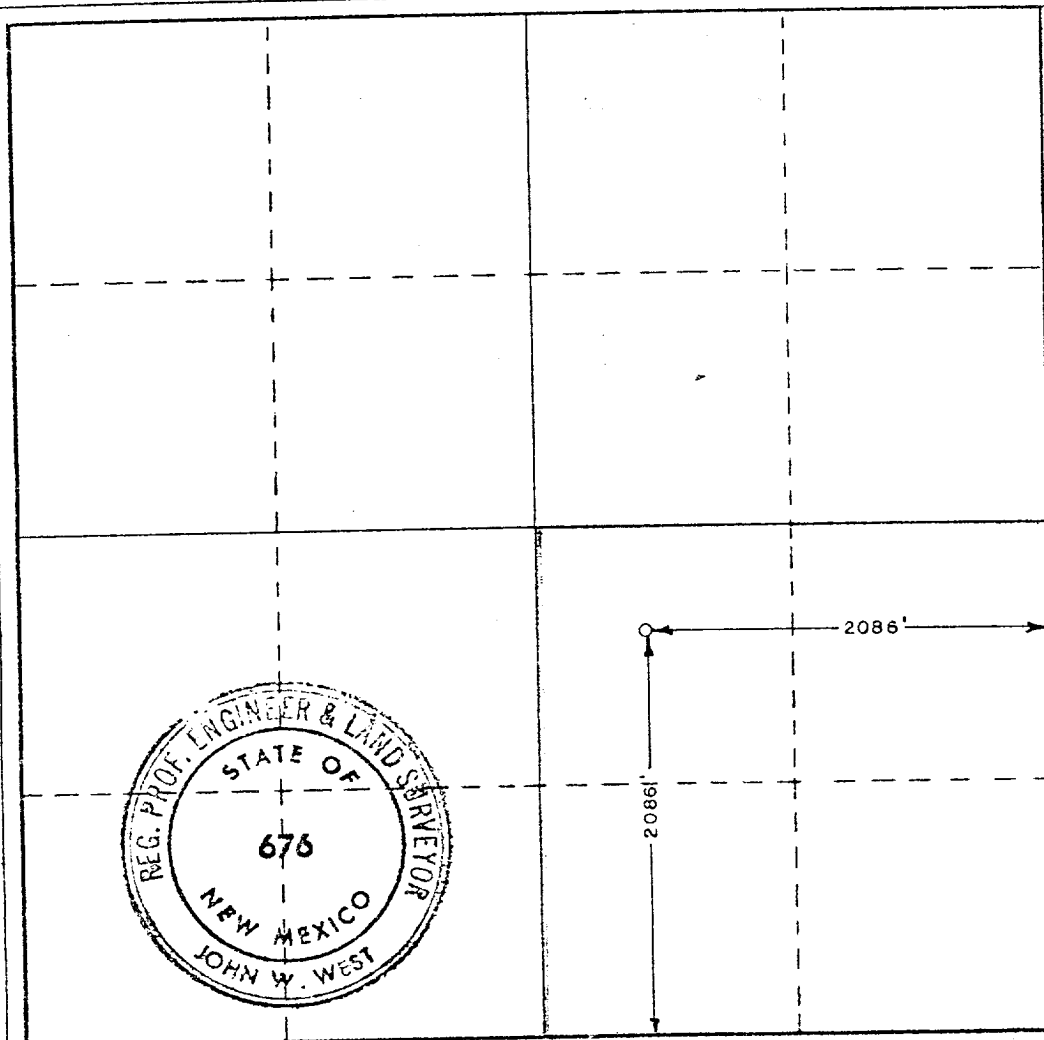
Operator LONE STAR PRODUCING CO.		Lease N.M. (83) STATE		Well No. 1
Unit Letter J	Section 33	Township 14 SOUTH	Range 34 EAST	County LEA
Actual Footage Location of Well: 2086 feet from the SOUTH line and 2086 feet from the EAST line				
Ground Level Elev. 4115	Producing Formation SAUNDERS LIME (PENN)	Pool TRES PAPALOTES	Dedicated Acreage: SE 1/4 160 Acres	

- Outline the acreage dedicated to the subject well by colored pencil or hatchure marks on the plat below.
- If more than one lease is dedicated to the well, outline each and identify the ownership thereof (both as to working interest and royalty).
- If more than one lease of different ownership is dedicated to the well, have the interests of all owners been consolidated by communitization, unitization, force-pooling, etc?

☐ Yes ☐ No If answer is "yes," type of consolidation _____

If answer is "no," list the owners and tract descriptions which have actually been consolidated. (Use reverse side of this form if necessary.) _____

No allowable will be assigned to the well until all interests have been consolidated (by communitization, unitization, forced-pooling, or otherwise) or until a non-standard unit, eliminating such interests, has been approved by the Commission.



CERTIFICATION

I hereby certify that the information contained herein is true and complete to the best of my knowledge and belief.

NOTE: *C.R. Ramsey*
Position: **DISTRICT PRODUCTION Supt.**
Company: **LONE STAR PRODUCING CO.**

Date: **MAY 28, 1970**

I hereby certify that the well location shown on this plat was plotted from field notes of actual surveys made by me or under my supervision, and that the same is true and correct to the best of my knowledge and belief.

Date Surveyed: **MAY 28, 1970**

Registered Professional Engineer and/or Land Surveyor

John W West
Certificate No. **676**

