

NO. OF COPIES RECEIVED	
DISTRIBUTION	
SANTA FE	
FILE	
U.S.G.S.	
LAND OFFICE	
OPERATOR	

NEW MEXICO OIL CONSERVATION COMMISSION

Form C-101
Revised 1-1-65

5A. Indicate Type of Lease	
STATE <input checked="" type="checkbox"/>	FEE <input type="checkbox"/>
5. State Oil & Gas Lease No.	
K-5450	

APPLICATION FOR PERMIT TO DRILL, DEEPEN, OR PLUG BACK

1a. Type of Work		7. Unit Agreement Name	
b. Type of Well OIL WELL <input checked="" type="checkbox"/> GAS WELL <input type="checkbox"/> OTHER <input type="checkbox"/>		8. Farm or Lease Name	
DEEPEN <input type="checkbox"/> PLUG BACK <input type="checkbox"/>		N. M. (87) State	
2. Name of Operator		9. Well No.	
Lone Star Producing Company		1	
3. Address of Operator		UNDESIGNATED	
Box 4815, Midland, Texas 79701		Tres Papalotes (Pann)	
4. Location of Well		12. County	
UNIT LETTER K LOCATED 1874 FEET FROM THE West LINE		Lea	
AND 2086 FEET FROM THE South LINE OF SEC. 33 TWP. 14-S RGE. 34-E NMPM			
19. Proposed Depth		19A. Formation	
10,600'		Saunders Line	
20. Rotary or C.T.		Rotary	
21. Elevations (Show whether DF, RT, etc.)		21A. Kind & Status Plug. Bond	
4107.4' G.L.		On File	
21B. Drilling Contractor		22. Approx. Date Work will start	
Marcum Drilling Company		December 10, 1970	

23.

PROPOSED CASING AND CEMENT PROGRAM

SIZE OF HOLE	SIZE OF CASING	WEIGHT PER FOOT	SETTING DEPTH	SACKS OF CEMENT	EST. TOP
17-1/2"	13-3/8"	118#	400'	300	Surface
11"	8-5/8"	21# & 32#	4,550'	500	3700'
7-7/8"	5-1/2"	15.5# & 17#	10,600'	460	9400'

Proposed drilling program:

- 1 - Drill 17-1/2" surface hole. Set and cement 13-3/8" casing.
- 2 - Install 3000 psi W.P., double ram type and Hydrill BOP equipment. Test surface casing and BOP equipment to 800 psi.
- 3 - Drill 11" hole to 4550'. Set and cement 8-5/8" casing at 4550'. Test BOP equipment and 8-5/8" intermediate casing to 1500 psi.
- 4 - Drill 7-7/8" hole to 10,600'. If production is indicated, 5-1/2" casing will be run and cemented with sufficient cement to protect all prospective pay sections.

APPROVAL VALID
FOR 90 DAYS UNLESS
DRILLING COMMENCED

THE COMMISSION MUST BE NOTIFIED
24 HOURS BEFORE RUNNING CASING

IN ABOVE SPACE DESCRIBE PROPOSED PROGRAM: IF PROPOSAL IS TO DEEPEN OR PLUG BACK, GIVE DATA ON PRESENT PRODUCTIVE ZONE AND PROPOSED NEW PRODUCTIVE ZONE. GIVE BLOWOUT PREVENTER PROGRAM, IF ANY.

I hereby certify that the information above is true and complete to the best of my knowledge and belief.

Signed E. C. Watson Title Asst. Dist. Prod. Supt. Date December 4, 1970

(This space for State Use)

APPROVED BY John W. Runyan TITLE Asst. Dist. Prod. Supt. DATE DEC 4 1970

CONDITIONS OF APPROVAL, IF ANY:

RECEIVED

DEC 7 1970

OIL CONSERVATION COM.
 HOBBS, N. M.

NEW MEXICO OIL CONSERVATION COMMISSION
WELL LOCATION AND ACREAGE DEDICATION PLAT

Form C-102
Supersedes C-128
Effective 1-1-65

All distances must be from the outer boundaries of the Section.

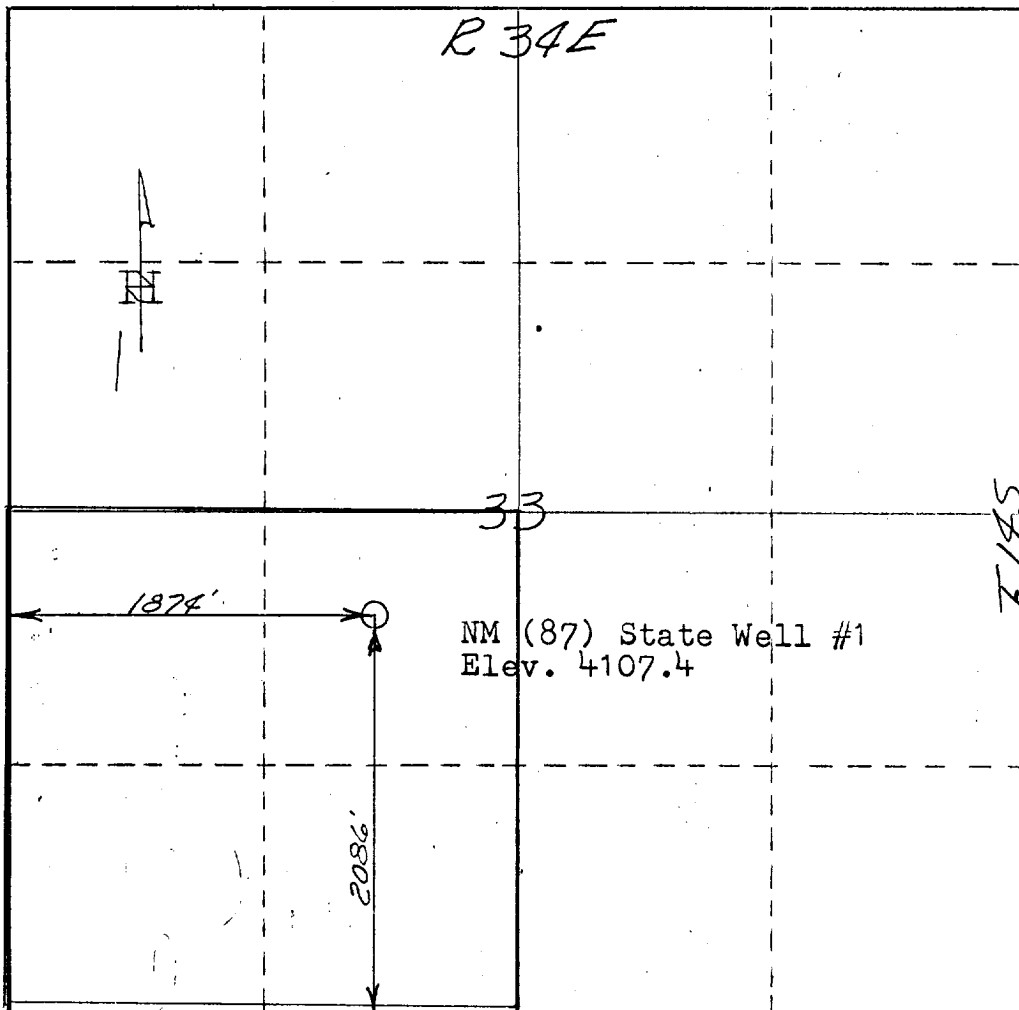
Operator Lone Star Producing Co.			Lease NM (87) State		Well No. 1
Unit Letter K	Section 33	Township 14 South	Range 34 East	County Lea	
Actual Footage Location of Well: 1874 feet from the West line and 2086 feet from the South line					
Ground Level Elev. 4107.4	Producing Formation Saunders Lime		Pool Tres Papalotes (Penn)		Dedicated Acreage 160 Acres

1. Outline the acreage dedicated to the subject well by colored pencil or hachure marks on the plat below.
2. If more than one lease is dedicated to the well, outline each and identify the ownership thereof (both as to working interest and royalty).
3. If more than one lease of different ownership is dedicated to the well, have the interests of all owners been consolidated by communitization, unitization, force-pooling, etc?

☐ Yes ☐ No If answer is "yes," type of consolidation **Not Applicable**

If answer is "no," list the owners and tract descriptions which have actually been consolidated. (Use reverse side of this form if necessary.)

No allowable will be assigned to the well until all interests have been consolidated (by communitization, unitization, forced-pooling, or otherwise) or until a non-standard unit, eliminating such interests, has been approved by the Commission.



CERTIFICATION

I hereby certify that the information contained herein is true and complete to the best of my knowledge and belief.

Name
E. C. [Signature]

Position
Asst. Dist. Prod. Supt.

Company
Lone Star Producing Company

Date
December 4, 1970

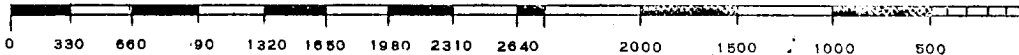
I hereby certify that the well location shown on this plat was plotted from field notes of actual surveys made by me or under my supervision, and that the same is true and correct to the best of my knowledge and belief.

December 2, 1970

Date Surveyed
James T. Bridgforth
Registered Professional Engineer
and/or Land Surveyor

NM No. 3510

Certificate No.



173

RECEIVED

DEC 7 1970

U. S. CONSERVATION COMMISSION
HOBBBS, N. H.