

NEW MEXICO OIL CONSERVATION COMMISSION  
WELL LOCATION AND ACREAGE DEDICATION PLAT

Form C-182  
Superseded C-128  
Effective 1-1-65

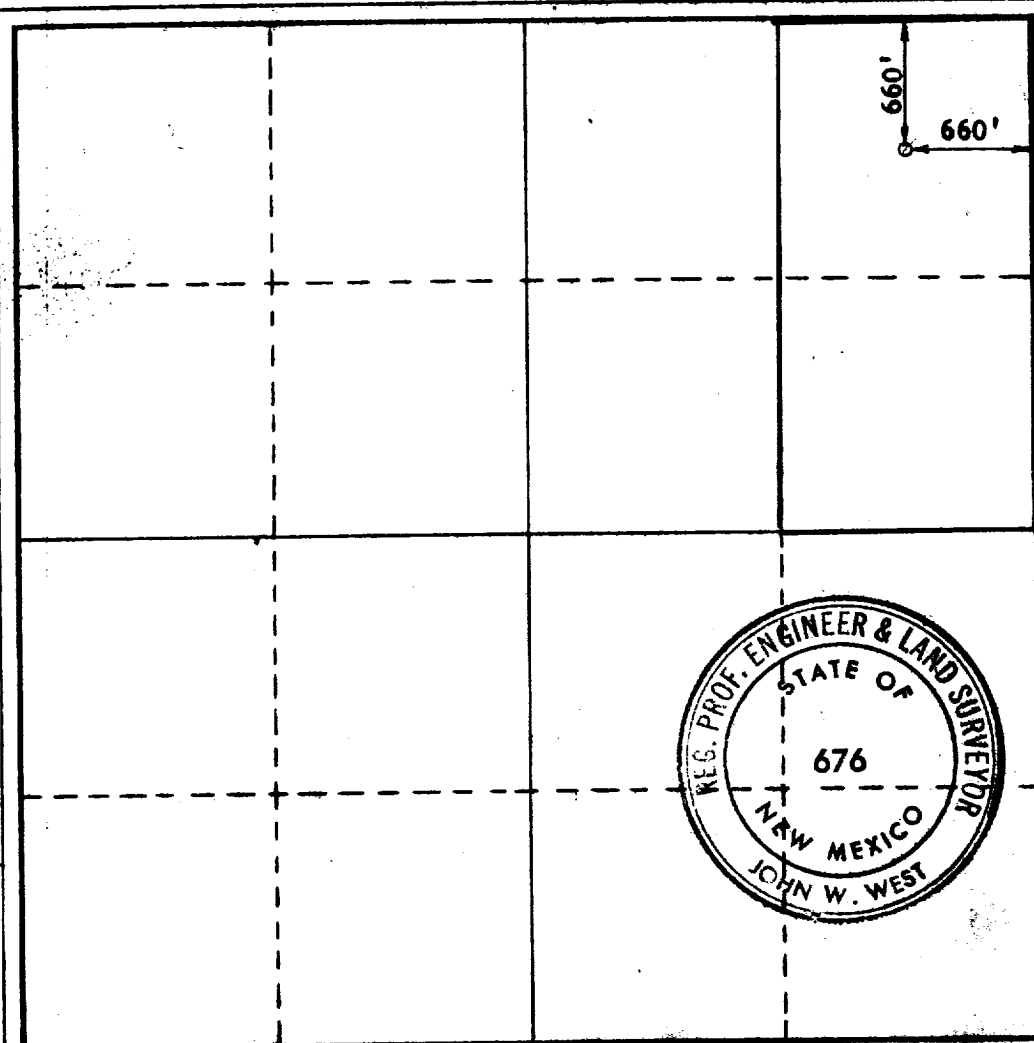
All distances must be from the outer boundaries of the Section.

Operator <b>TEXAS &amp; PACIFIC OIL CO.</b>			Lease <b>VIKING STATE Unit</b>		Well No. <b>1</b>
Unit Letter <b>A</b>	Section <b>16</b>	Township <b>12 SOUTH</b>	Range <b>33 EAST</b>	County <b>LEA</b>	
Actual Footage Location of Well: <b>660</b> feet from the <b>NORTH</b> line and <b>660</b> feet from the <b>EAST</b> line					
Ground Level Elev. <b>4262.9</b>	Producing Formation <b>Penn</b>		Pool <b>North Bagley</b>		Dedicated Acreage: <b>80</b> Acres

1. Outline the acreage dedicated to the subject well by colored pencil or hachure marks on the plat below.
2. If more than one lease is dedicated to the well, outline each and identify the ownership thereof (both as to working interest and royalty).
3. If more than one lease of different ownership is dedicated to the well, have the interests of all owners been consolidated by communitization, unitization, force-pooling, etc?
- ☐ Yes ☐ No If answer is "yes," type of consolidation \_\_\_\_\_

If answer is "no," list the owners and tract descriptions which have actually been consolidated. (Use reverse side of this form if necessary.) \_\_\_\_\_

No allowable will be assigned to the well until all interests have been consolidated (by communitization, unitization, forced-pooling, or otherwise) or until a non-standard unit, eliminating such interests, has been approved by the Commission.



CERTIFICATION

I hereby certify that the information contained herein is true and complete to the best of my knowledge and belief.

Name  
**C. R. Tilley**  
Position  
**Area Production Foreman**  
Company  
**TEXAS PACIFIC OIL CO., INC.**  
Date  
**5-25-72**

I hereby certify that the well location shown on this plat was plotted from field notes of actual surveys made by me or under my supervision, and that the same is true and correct to the best of my knowledge and belief.

Date Surveyed  
**MAY 23, 1972**  
Registered Professional Engineer and/or Land Surveyor  
**John W. West**  
Certificate No. **676**

0 200 400 600 800 1000 1200 1400 1600 1800 2000 2200 2400 2600 2800 3000 3200 3400 3600 3800 4000

173

RECEIVED

MAY 20 1972

OIL CONSERVATION COMM.  
HOBBS, N. M.