

**NEW MEXICO OIL CONSERVATION COMMISSION
WELL LOCATION AND ACREAGE DEDICATION PLAT**

Form O-100
Supersedes O-128
Effective 1-1-65

All distances must be from the outer boundaries of the Section

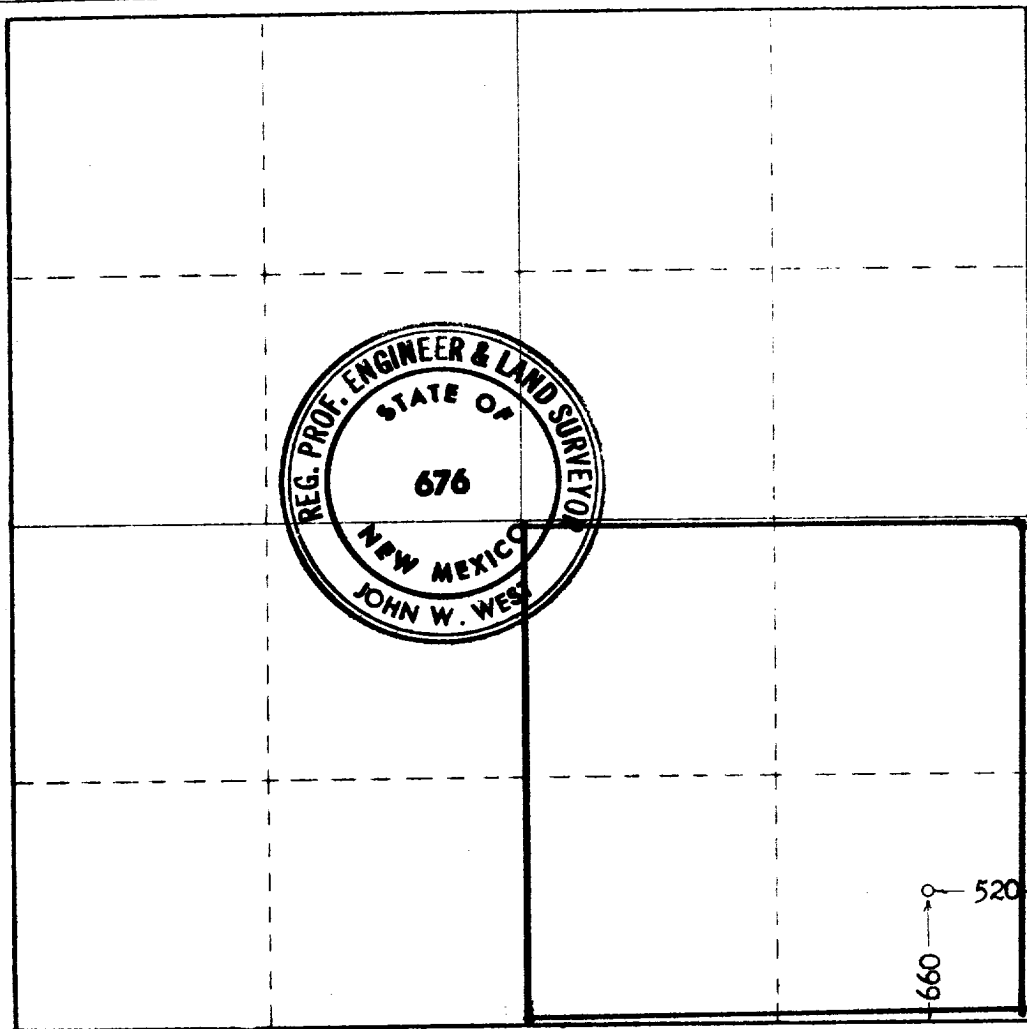
Operator ELK OIL COMPANY		Lease Etcheverry-State		Well No. 1
Unit Letter P	Section 32	Township 14 South	Range 34 East	County Lea
Actual Footage Location of Well: 660 feet from the south line and 520 feet from the east line				
Ground Level Elev. 4112.4'	Producing Formation Permian Perm	Pool Tres Papalotes	Estimated Acreage 160 Acres	

1. Outline the acreage dedicated to the subject well by colored pencil or hachure marks on the plat below.
2. If more than one lease is dedicated to the well, outline each and identify the ownership thereof (both as to working interest and royalty).
3. If more than one lease of different ownership is dedicated to the well, have the interests of all owners been consolidated by communitization, unitization, force-pooling, etc?

☐ Yes ☐ No If answer is "yes," type of consolidation _____

If answer is "no," list the owners and tract descriptions which have actually been consolidated (Use reverse side of this form if necessary.) _____

No allowable will be assigned to the well until all interests have been consolidated (by communitization, unitization, forced-pooling, or otherwise) or until a non-standard unit, eliminating such interests, has been approved by the Commission.



CERTIFICATION

I hereby certify that the information contained herein is true and complete to the best of my knowledge and belief.

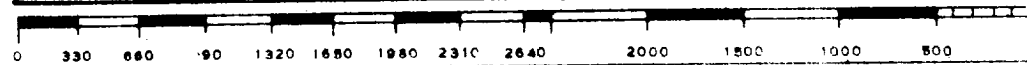
By *John W West*
Agent
ELK Oil Co
Date **10-6-1972**

I hereby certify that the well location shown on this plat was plotted from field notes of actual surveys made by me or under my supervision, and that the same is true and correct to the best of my knowledge and belief.

Date Surveyed
October 5, 1972

Registered Professional Engineer and Land Surveyor

John W West
Certificate No. **676**



44

RECEIVED

U. S. 1972

CONSERVATION COMM.
HOBBS N. M.