

NEW MEXICO OIL CONSERVATION COMMISSION
WELL LOCATION AND ACREAGE DEDICATION PLAT

Form C-102
Supersedes C-128
Effective 1-1-65

All distances must be from the outer boundaries of the Section

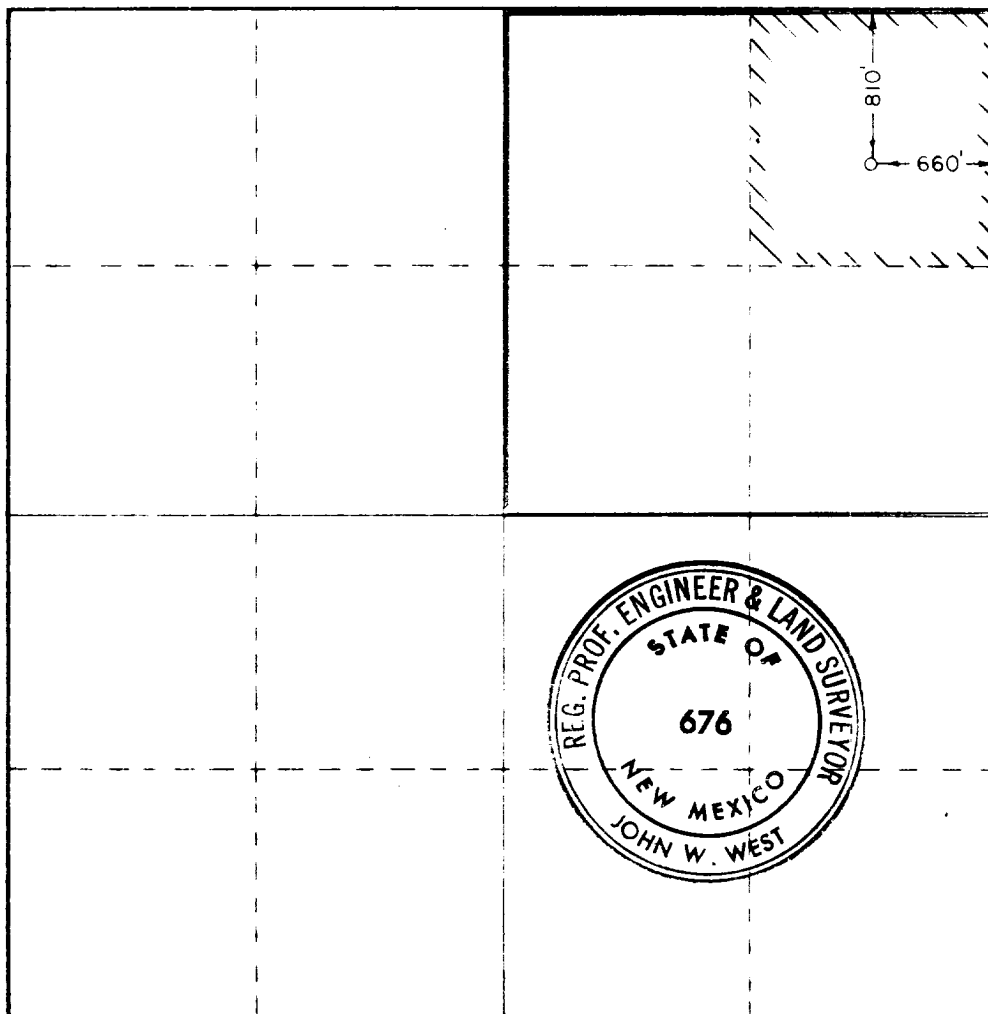
Owner R. L. Burns Corporation			Lease State 32		Well No. 1-Y
Section A	Section 32	Township 14 South	Range 32 East	County Lea	
Aerial Well Location of Well: 810 feet from the North line and 660 feet from the East line					
Ground Level Elev. 4328.7	Producing Formation PENNSYLVANIAN		Pool TULK - PENN.		Dedicated Acreage: 160 Acres

1. Outline the acreage dedicated to the subject well by colored pencil or hachure marks on the plat below.
2. If more than one lease is dedicated to the well, outline each and identify the ownership thereof (both as to working interest and royalty)
3. If more than one lease of different ownership is dedicated to the well, have the interests of all owners been consolidated by communitization, unitization, force-pooling, etc?

☐ Yes ☐ No If answer is "yes," type of consolidation _____

If answer is "no," list the owners and tract descriptions which have actually been consolidated. (Use reverse side of this form if necessary.) _____

No allowable will be assigned to the well until all interests have been consolidated (by communitization, unitization, forced-pooling, or otherwise) or until a non-standard unit, eliminating such interests, has been approved by the Commission.



CERTIFICATION

I hereby certify that the information contained herein is true and complete to the best of my knowledge and belief.

John D. Dutton
Name

PETROLEUM ENGINEER
Position

R. L. BURNS CORP.
Company

JANUARY 31, 1975
Date

I hereby certify that the well location shown on this plat was plotted from field notes of actual surveys made by me or under my supervision, and that the same is true and correct to the best of my knowledge and belief.

Date Surveyed

January 28, 1975

Registered Professional Engineer and/or Land Surveyor

John W. West
Certificate No.

676



NOTED

NOV 1975

OIL COMPANY, INC. (PMA)
HONOLULU, HI.

RECEIVED

NOV 1975

AMERICAN CORP.

473