

NUMBER OF COPIES REQUIRED	
DISTRIBUTION	
SANTA FE	
FILE	
USGS	
LAND OFFICE	
TRANSPORTER	OIL GAS
PRODUCTION OFFICE	
OPERATOR	

NEW MEXICO OIL CONSERVATION COMMISSION
Santa Fe, New Mexico

Form C-101
Revised 12/1/55

NOTICE OF INTENTION TO DRILL

Notice must be given to the District Office of the Oil Conservation Commission and approval obtained before drilling or recompletion begins. If changes in the proposed plan are considered advisable, a copy of this notice showing such changes will be returned to the sender. Submit this notice in QUINTUPLICATE. One copy will be returned following approval. See additional instructions in Rules and Regulations of the Commission. If State Land submit 6 Copies. Attach Form C-128 in triplicate to first 3 copies of Form C-101.

Box 1980, Hobbs, New Mexico 88240

May 5, 1975

(Place)

(Date)

OIL CONSERVATION COMMISSION
SANTA FE, NEW MEXICO

Gentlemen:

You are hereby notified that it is our intention to commence the Drilling of a well to be known as

THE WIL-MC OIL CORP.

(Company or Operator)

NOVEMBER

(Lease)

, Well No. 1

, in O

(Unit)

The well is

located 660 feet from the South line and 1980 feet from the

East

line of Section 16

, T 13S

, R 38E

, NMPM.

(GIVE LOCATION FROM SECTION LINE)

Wildcat

Pool,

Lea

County

If State Land the Oil and Gas Lease is No.

If patented land the owner is

Address

We propose to drill well with drilling equipment as follows: Rotary Tools

The status of plugging bond is on file with Commission

Drilling Contractor Cactus Drilling Company

We intend to complete this well in the Devonian

formation at an approximate depth of 12,500 feet.

D	C	B	A
E	F	G	H
L	K	J	I
M	N	Location © 1980 660	

Section 16

CASING PROGRAM

We propose to use the following strings of Casing and to cement them as indicated:

Size of Hole	Size of Casing	Weight per Foot	New or Second Hand	Depth	Sacks Cement
15"	12-3/4"	35#	New	400'	300 sx.
11"	8-5/8"	24&32#	New & Sec.Hd.	4700'	150 sx.
7-7/8"	5-1/2"	17&20#	New	12,600'	475 sx.

If changes in the above plans become advisable we will notify you immediately.

ADDITIONAL INFORMATION (If recompletion give full details of proposed plan of work.)

APPROVAL VALID
FOR 90 DAYS UNLESS
DRILLING COMMENCED,

EXPIRES 8-9-75

Approved _____ 19

Except as follows:

Sincerely yours,

THE WIL-MC OIL CORP.

(Company or Operator)

By

Position Chief Engineer

Send Communications regarding well to

Name Lee V. Hall

Address 3005 Fidelity Union Tower

OIL CONSERVATION COMMISSION

By

**MEXICO OIL CONSERVATION COMMISSION
WELL LOCATION AND ACREAGE DEDICATION PLAT**

Form C-112
Supersedes C-128
Effective 1-1-65

All distances must be from the outer boundaries of the Section

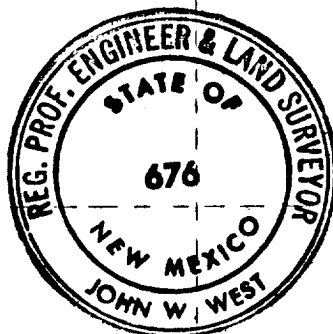
Operator Wil - Mac Oil Corporation			Lease November		Well No. 1
Section O	Section 16	Township 13 South	Range 38 East	County Lea	
Actual Location of Well: 660 feet from the South line and 1980 feet from the East line					
Ground Level Elev. 3818.4	Producing Formation		Pool	Dedicated Acreage: 40 Acres	

1. Outline the acreage dedicated to the subject well by colored pencil or hachure marks on the plat below.
2. If more than one lease is dedicated to the well, outline each and identify the ownership thereof (both as to working interest and royalty).
3. If more than one lease of different ownership is dedicated to the well, have the interests of all owners been consolidated by communitization, unitization, force-pooling, etc?

☐ Yes ☐ No If answer is "yes," type of consolidation _____

If answer is "no," list the owners and tract descriptions which have actually been consolidated. (Use reverse side of this form if necessary.) _____

No allowable will be assigned to the well until all interests have been consolidated (by communitization, unitization, forced-pooling, or otherwise) or until a non-standard unit, eliminating such interests, has been approved by the Commission.



CERTIFICATION

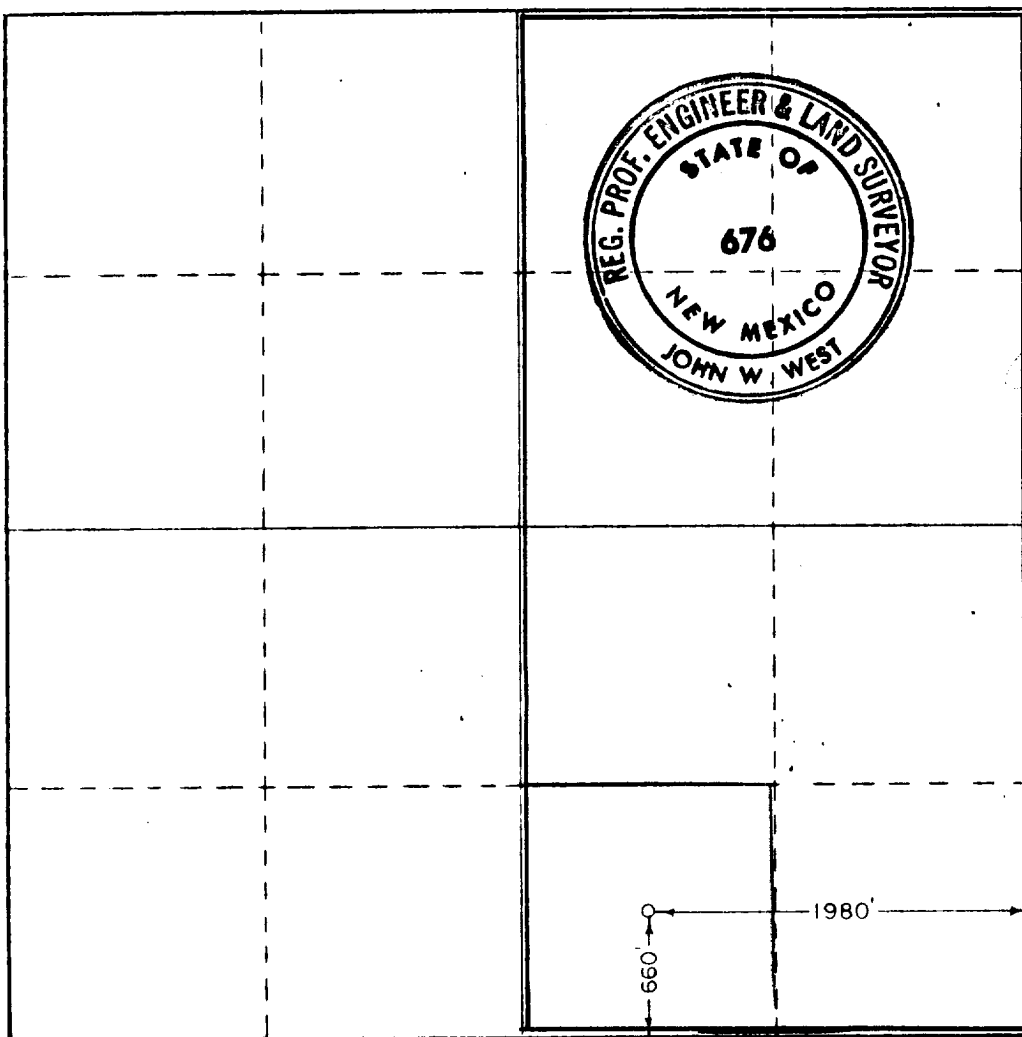
I hereby certify that the information contained herein is true and complete to the best of my knowledge and belief.

Name: John W. West
 Position: Asst. Eng.
 Company: _____
 Date: _____

I hereby certify that the well location shown on this plat was plotted from field notes of actual surveys made by me or under my supervision, and that the same is true and correct to the best of my knowledge and belief.

Date Surveyed:
May 2, 1975
 Registered Professional Engineer and/or Land Surveyor

John W. West
 Certificate No. **676**



0 330 660 990 1320 1650 1980 2310 2640 2970 3300 3630 3960 4290 4620 4950 5280 5610 5940 6270 6600