

NO. OF COPIES RECEIVED	
DISTRIBUTION	
SANTA FE	
FILE	
U.S.G.S.	
LAND OFFICE	
OPERATOR	

RECEIVED  
NEW MEXICO OIL CONSERVATION COMMISSION

DEC 28 1976

O.C.C.  
ARTESIA OFFICE

Form C-101  
Revised 1-1-65

5A. Indicate Type of Lease STATE <input checked="" type="checkbox"/> FEDERAL <input type="checkbox"/>
5. State Oil & Gas Lease No. L-45
7. Unit Agreement Name
8. Farm or Lease Name LDM-AMOCO State
9. Well No. 1
10. Field and Pool, or Wildcat Wildcat
11. County El Paso
12. Proposed Depth 10,600'
13A. Formation Permian-Penn
14. Rotary or C.I. Rotary
21. Elevations (Show whether D.P., R.T., etc.) 4262' GR
21A. E.C. & Status (Plug, Bond) Blanket
21B. Drilling Contractor Moran Drilling Co.
22. Approx. Date Work will start December-28, 1976

APPLICATION FOR PERMIT TO DRILL, DEEPEN, OR PLUG BACK

1a. Type of Work b. Type of Well OIL WELL <input checked="" type="checkbox"/> GAS WELL <input type="checkbox"/> OTHER <input type="checkbox"/> DRILL <input checked="" type="checkbox"/> DEEPEN <input type="checkbox"/> PLUG BACK <input type="checkbox"/> SINGLE ZONE <input checked="" type="checkbox"/> MULTIPLE ZONE <input type="checkbox"/>	2. Name of Operator Yates Petroleum Corporation	3. Address of Operator 207 South Fourth Street, Artesia, NM 88210	4. Location of Well UNIT LETTER N LOCATED 660 FEET FROM THE South LINE AND 1926 FEET FROM THE West LINE OF SEC. 19 TWP. 14S RGE. 33E NMPM
23. PROPOSED CASING AND CEMENT PROGRAM			

SIZE OF HOLE	SIZE OF CASING	WEIGHT PER FOOT	SETTING DEPTH	SACKS OF CEMENT	EST. TOP
17 1/2"	13-3/8"	48#	Approx. 370'	Circulate	
11"	8-5/8"	24# & 32#	Approx. 4100'	Circulate	
7-7/8"	5 1/2" or 4 1/2"	17 or 11.6#	Approx. 10600'	300 sacks	

Propose to drill a 10,600' well and test the Wolfcamp and intermediate horizons. Approximately 370' of surface casing will be set, cement circulated, and approximately 4100' of intermediate casing will be set, cement circulated in one stage or by DV tool. If commercial, will case, cement, perforate and stimulate as needed for production.

MUD PROGRAM: Gel & LCM to 1900', Saturated Brine to 4100', fresh water to 8700', KCL water to 9500', Flosal-Drispak-KCL mud to TD.

BOP PROGRAM: BOP's on 13-3/8" and on 8-5/8" casing, tested daily.

EXPIRES

IN ABOVE SPACE DESCRIBE PROPOSED PROGRAM: IF PROPOSAL IS TO DEEPEN OR PLUG BACK, GIVE DATA ON PRESENT PRODUCTIVE ZONE AND PROPOSED NEW PRODUCTIVE ZONE. GIVE BLOWOUT PREVENTER PROGRAM, IF ANY.

I hereby certify that the information above is true and complete to the best of my knowledge and belief.

Signed G. L. H. H. H. H. Title Engineer Date 12-27-76

(This space for State Use)

APPROVED BY J. J. J. J. J. TITLE SUPERVISOR DATE JAN 3 1977

CONDITIONS OF APPROVAL, IF ANY

RECEIVED

SEP 8 1976

OIL CONSERVATION COMM.  
HOBBS, N. M.

**NEW MEXICO OIL CONSERVATION COMMISSION  
WELL LOCATION AND ACREAGE DEDICATION PLAT**

Form C-102  
Supersedes C-128  
Effective 1-1-65

All distances must be from the outer boundaries of the Section

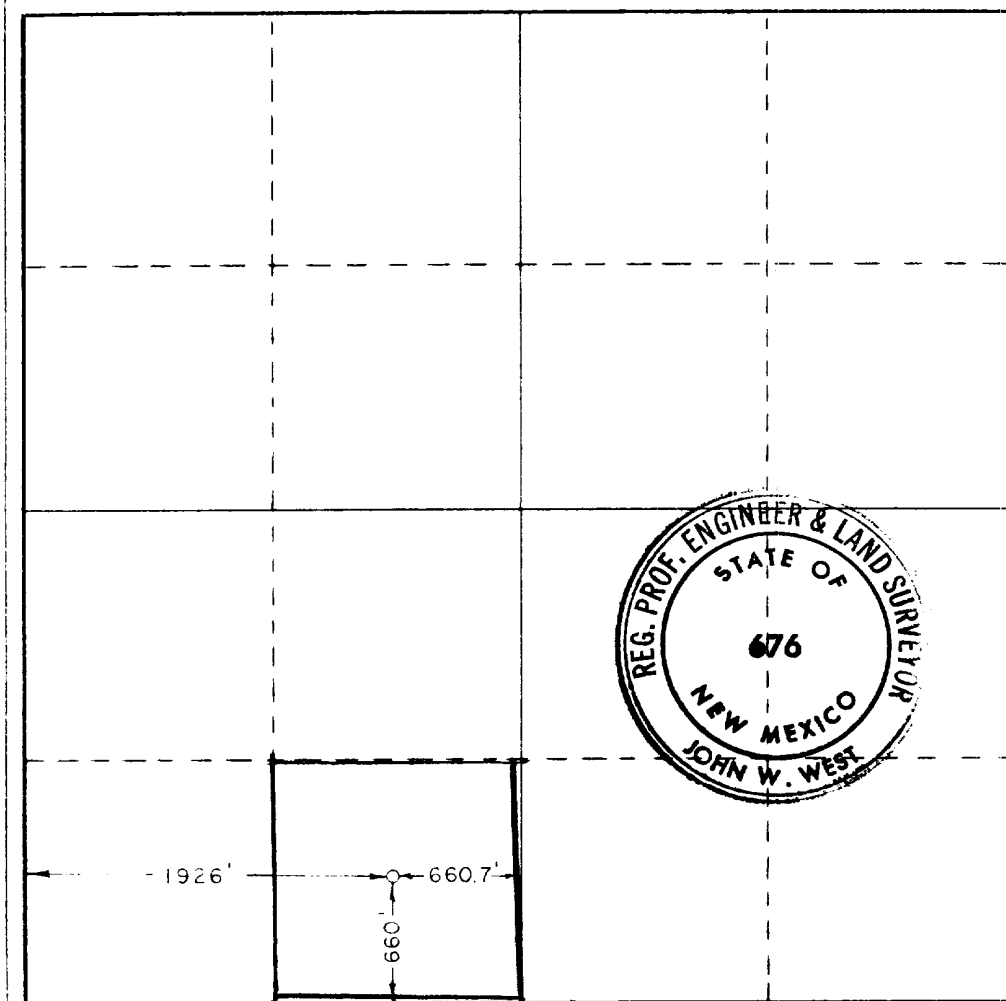
Operator <b>YATES PETROLEUM CORPORATION</b>			Lease <b>LDM Amoco-State "GX" State</b>		Well No. <b>1</b>
Tract Letter <b>N</b>	Section <b>19</b>	Township <b>14 South</b>	Range <b>33 East</b>	County <b>Lea</b>	
Actual Footage Location of Well: <div style="display: flex; justify-content: space-between;"> <span>1926 feet from the west line and</span> <span>660 feet from the south line</span> </div>					
Ground Level Elev. <b>4261.7</b>	Producing Formation <b>Permo-Penn</b>	Pool	Dedicated Acreage: <div style="text-align: right;">Acres</div>		

1. Outline the acreage dedicated to the subject well by colored pencil or hatchure marks on the plat below.
2. If more than one lease is dedicated to the well, outline each and identify the ownership thereof (both as to working interest and royalty).
3. If more than one lease of different ownership is dedicated to the well, have the interests of all owners been consolidated by communitization, unitization, force-pooling, etc?

☐ Yes    ☐ No    If answer is "yes," type of consolidation \_\_\_\_\_

If answer is "no," list the owners and tract descriptions which have actually been consolidated. (Use reverse side of this form if necessary.) \_\_\_\_\_

No allowable will be assigned to the well until all interests have been consolidated (by communitization, unitization, forced-pooling, or otherwise) or until a non-standard unit, eliminating such interests, has been approved by the Commission.



**CERTIFICATION**

I hereby certify that the information contained herein is true and complete to the best of my knowledge and belief.

*Eddie M. Mahfood*  
Name

**Eddie M. Mahfood**

Position

**Engineer**

Company

**Yates Petroleum Corp.**

Date

**12-27-76**

I hereby certify that the well location shown on this plat was plotted from field notes of actual surveys made by me or under my supervision, and that the same is true and correct to the best of my knowledge and belief.

Date Surveyed

**Dec. 11, 1976**

Registered Professional Engineer  
and/or Land Surveyor

*John W. West*  
Certificate No.

**676**

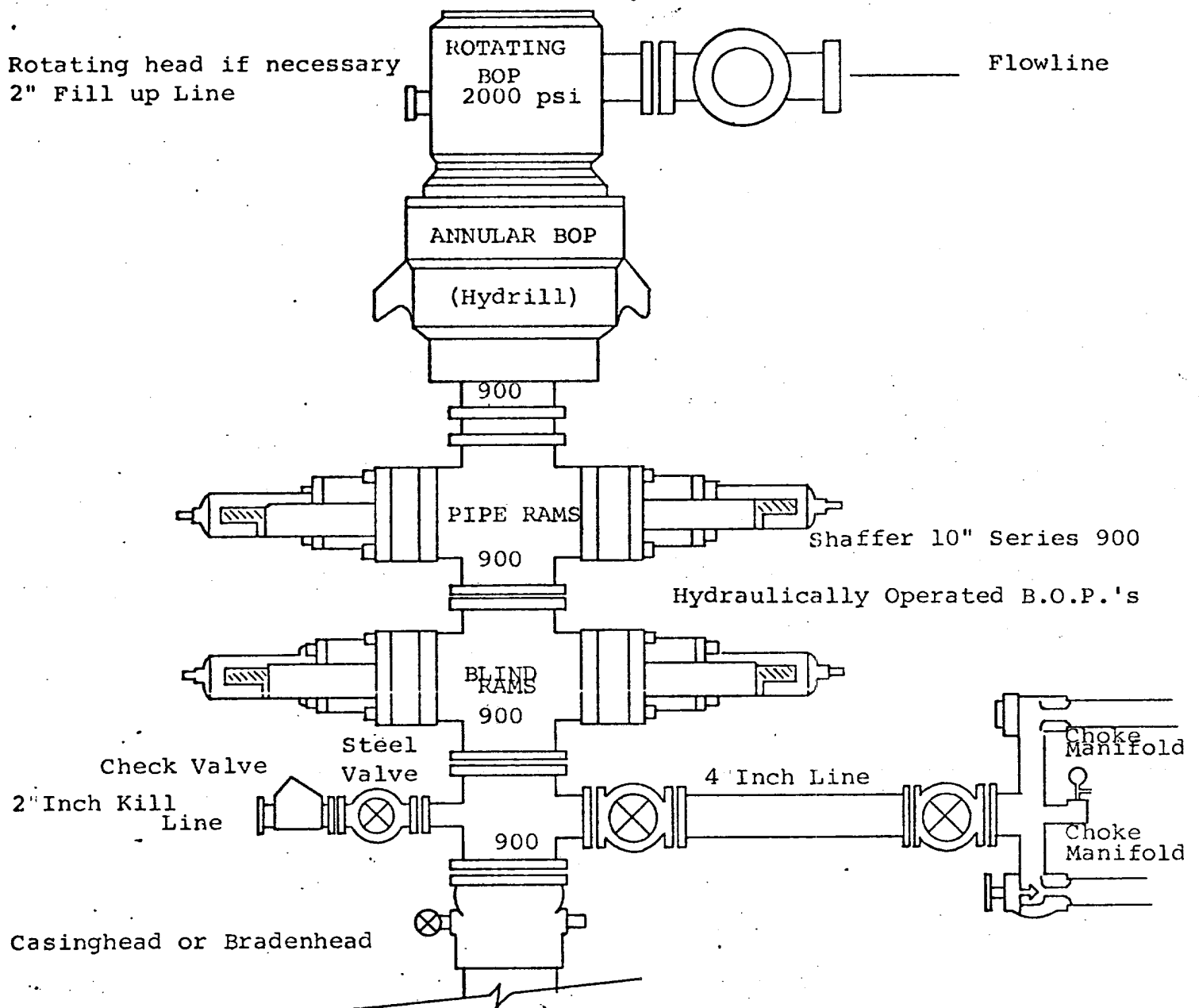
0 330 660 990 1320 1650 1980 2310 2640 2000 1500 1000 500 0

RECEIVED

DEC 3 1976

OIL CONSERVATION COMM.

HOBBS, N. M.



THE FOLLOWING CONSTITUTE MINIMUM BLOWOUT PREVENTER REQUIREMENTS

1. All preventers to be hydraulically operated with secondary manual controls installed prior to drilling out from under casing.
2. Choke outlet to be a minimum of 4" diameter.
3. Kill line to be of all steel construction of 2" minimum diameter.
4. All connections from operating manifolds to preventers to be all steel, hole or tube a minimum of one inch in diameter.
5. The available closing pressure shall be at least 15% in excess of that required with sufficient volume to operate the B.O.P.'s.
6. All connections to and from preventer to have a pressure rating equivalent to that of the B.O.P.'s.
7. Inside blowout preventer to be available on rig floor.
8. Operating controls located a safe distance from the rig floor.
9. Hole must be kept filled on trips below intermediate casing. Operator not responsible for blowouts resulting from not keeping hole full.
10. D. P. float must be installed and used below zone of first gas intrusion.

RECEIVED

DEC 8 1976