

NEW MEXICO OIL CONSERVATION COMMISSION
WELL LOCATION AND ACREAGE DEDICATION PLAT

Form C-102
Supersedes C-128
Effective 1-1-65

All distances must be from the outer boundaries of the Section.

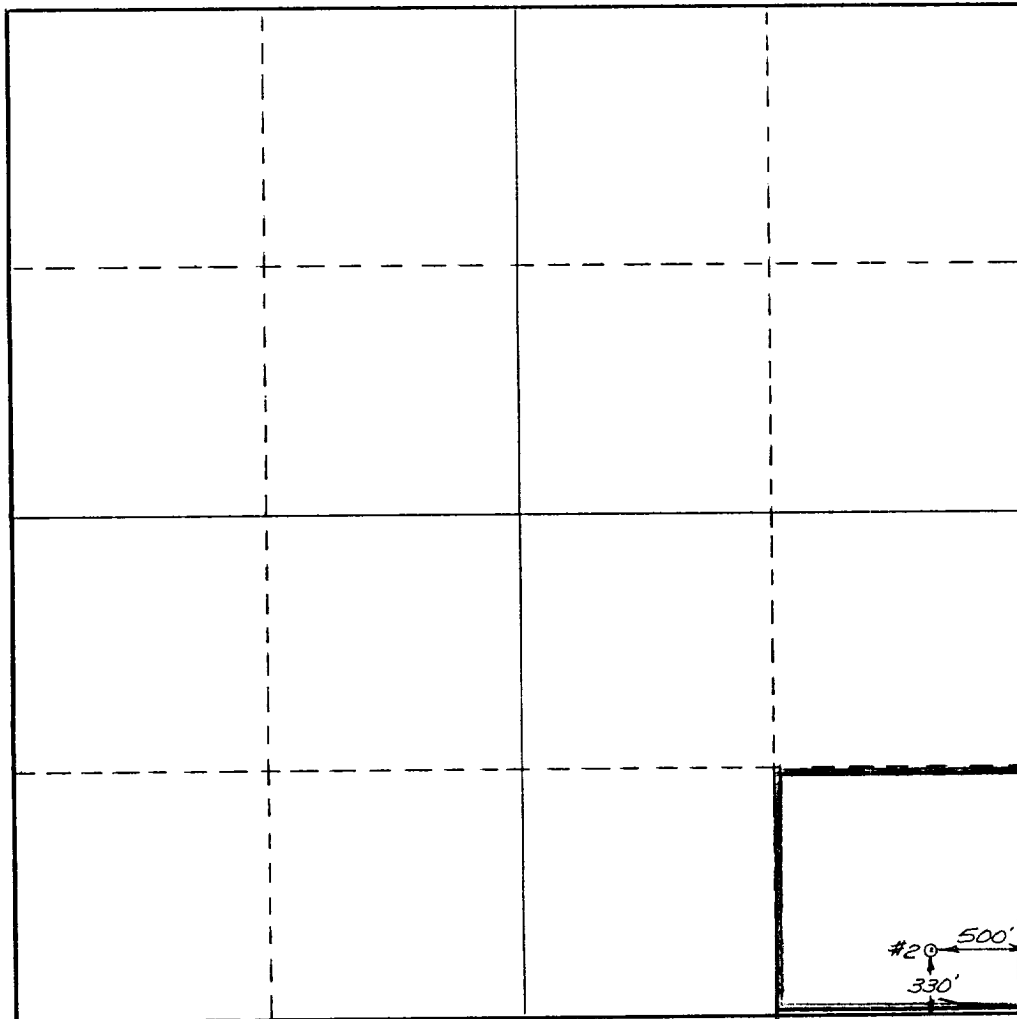
Operator COTTON PETROLEUM CORPORATION			Lease Lowland		Well No. 2
Unit Letter P	Section 26	Township T-13-S	Range R-37-E	County LEA	
Actual Footage Location of Well: 330 feet from the South line and 500 feet from the East line					
Ground Level Elev. 3858'	Producing Formation Devonian		Pool King (Dev.)		Dedicated Acreage: 40 Acres

1. Outline the acreage dedicated to the subject well by colored pencil or hachure marks on the plat below.
2. If more than one lease is dedicated to the well, outline each and identify the ownership thereof (both as to working interest and royalty).
3. If more than one lease of different ownership is dedicated to the well, have the interests of all owners been consolidated by communitization, unitization, force-pooling, etc?

☐ Yes ☐ No If answer is "yes," type of consolidation N/A

If answer is "no," list the owners and tract descriptions which have actually been consolidated. (Use reverse side of this form if necessary.) N/A

No allowable will be assigned to the well until all interests have been consolidated (by communitization, unitization, forced-pooling, or otherwise) or until a non-standard unit, eliminating such interests, has been approved by the Commission.
R 37 E



CERTIFICATION

I hereby certify that the information contained herein is true and complete to the best of my knowledge and belief.

Name
L. G. Langley
Position
Division Production Manager
Company
COTTON PETROLEUM CORPORATION

Date
August 10, 1978

I hereby certify that the well location shown on this plat was plotted from field notes of actual surveys made by me or under my supervision, and that the same is true and correct to the best of my knowledge and belief.

August 9, 1978

Date Surveyed
Richard B. Duniven
Registered Professional Engineer
and/or Land Surveyor

Richard B. Duniven
Certificate No.

4882

T
13
S

RECEIVED

AUG 11 1978

OIL CONSERVATION COMM.
CORPS, H. M.

ATTACHMENT "A"

North King Prospect
Lea County, New Mexico

25% Working Interest distributed as follows:

Patrick J. Leonard	1/32
Robert J. Leonard	1/32
Rogers Aston	1/32
Tom P. Stephens	1/32
Chuck Aston	1/32
Lincoln Aston	1/32
Record Resources	1/16

20% Royalty Interest divided among:

H. L. Lowe, Shana Lowe,
Vivian Lowe Anselmi, Ronnie P. Lowe,
Kay Lowe Hughes, Teddy L. Hartley,
Robert P. Hartley, and Lowe Land Company

RECEIVED

AUG 11 1978

OIL CONSERVATION COMM.
DOES, N. M.

FILE