

**NEW MEXICO OIL CONSERVATION COMMISSION
WELL LOCATION AND ACREAGE DEDICATION PLAT**

Form C-102
Supersedes C-128
Effective 1-1-65

All distances must be from the outer boundaries of the Section

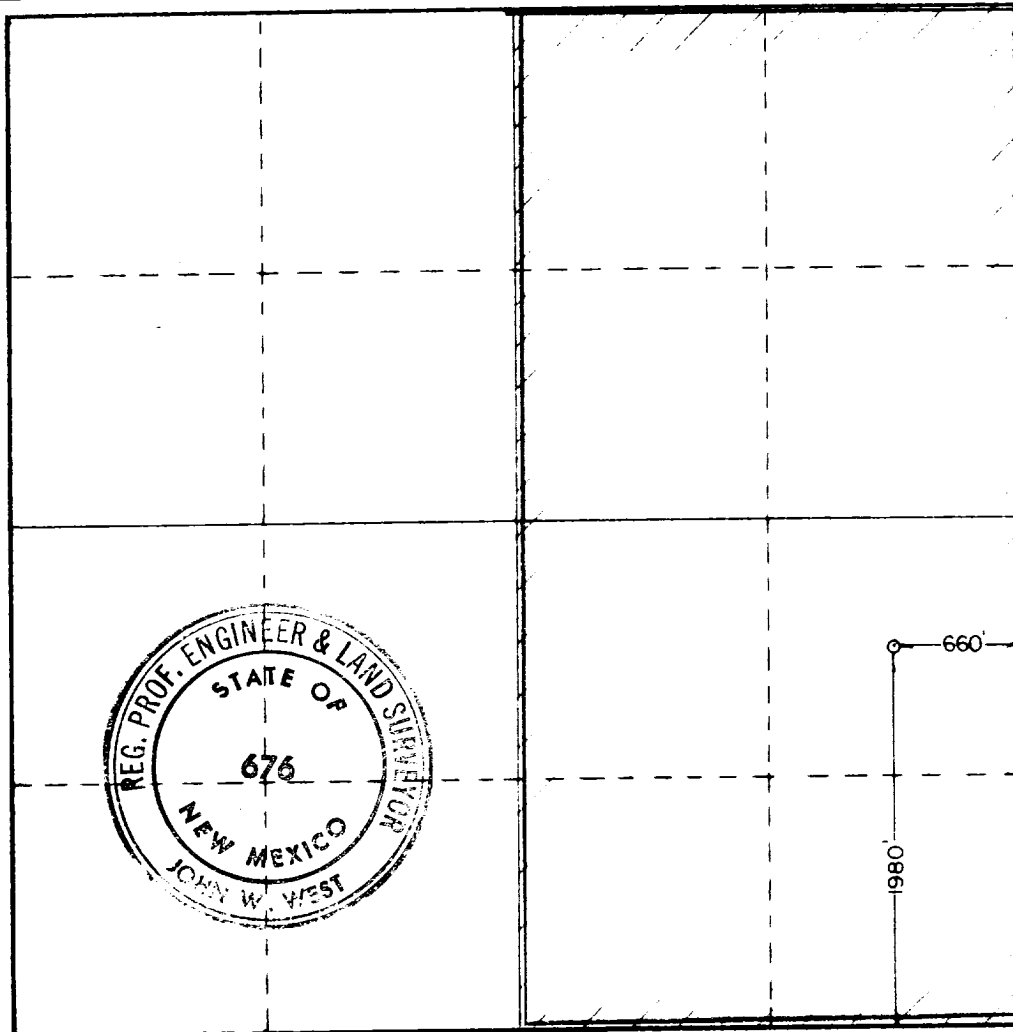
Operator HARVEY E. YATES COMPANY			Lease AUSTIN-MONTIETH		Well No. 2
Unit Letter 1	Section 8	Township 14 SOUTH	Range 36 EAST	County LEA	
Actual Footage Location of Well: <div style="display: flex; justify-content: space-between;"> 1980 feet from the SOUTH line and 660 feet from the EAST line </div>					
Ground Level Elev 3959.5	Producing Formation MISSISSIPPIAN		Pool UNDESIGNATED (AUSTIN-MISS)		Designated Acreage: 320 Acres

1. Outline the acreage dedicated to the subject well by colored pencil or hatchure marks on the plat below.
2. If more than one lease is dedicated to the well, outline each and identify the ownership thereof (both as to working interest and royalty).
3. If more than one lease of different ownership is dedicated to the well, have the interests of all owners been consolidated by communitization, unitization, force-pooling, etc?

☒ Yes ☐ No If answer is "yes," type of consolidation **See Revision**
FORCED POOL HEARING SCHEDULED OCD

If answer is "no," list the owners and tract descriptions which have actually been consolidated. (Use reverse side of this form if necessary.) _____

No allowable will be assigned to the well until all interests have been consolidated (by communitization, unitization, forced-pooling, or otherwise) or until a non-standard unit, eliminating such interests, has been approved by the Commission.



CERTIFICATION

I hereby certify that the information contained herein is true and complete to the best of my knowledge and belief.

Name *Alvin M. Pope*
Position *Adm Asst*

Company
HARVEY E. YATES COMPANY

Date
JUNE 20TH, 1979

I hereby certify that the well location shown on this plat was plotted from field notes of actual surveys made by me or under my supervision, and that the same is true and correct to the best of my knowledge and belief.

Date Surveyed
JUNE 19TH, 1979

Registered Professional Engineer and/or Land Surveyor

John W. West

Certificate No. **John W. West 676**

Ronald J. Eidson 3239

0 330 660 990 1320 1650 1980 2310 2640 2970 3300 3630 3960 4290 4620 4950 5280 5610 5940 6270 6600

**MORANCO
RIG 7**
7,500'-14,000'

Brake: Hydromatic Parkersburg 40"

Two 610-H.P. D379TA Caterpillar Diesel.

Lee C. Moore, 131', 550,000 lb. nominal capacity.

Lee C. Moore, 14½' high, 550,000 lb. nominal capacity.

Pump No. 2: NAT C-250, 350 H.P. Powered by D353 Caterpillar Diesel.

Other sized drillpipe & drillcollars available.

Choke manifold 4" x 1500 series flanged connections. Payne 4 valve accumulator closing unit.

3 — 30 x 7½ x 6 steel pits, with 700 Bbl. capacity. Complete low pressure circulating system, consisting of four submerged mud guns and two counter sunk jets in each pit. System utilizes a 6 x 8 centrifugal pump, powered by diesel.

One — 8' x 30' Steel Storage House

24-Hour direct telephone interconnection through Hobbs (A.C. 505-397-3291) or Midland - Odessa (A.C. 915-563-0562).

BLOCKS – Oilwell 350 Ton

HOOK – BJ4300 350 Ton

SWIVEL – NAT N69 350 Ton

LIGHT PLANTS -- One 40 KW and one 20 KW AC generators, powered by diesel engines.

LIGHTS – AC fluorescent or mercury -
All vapor proof.

SHALE SHAKER — Link belt, single screen.

FRESH WATER STORAGE — two 500 Bbl., horizontal tanks.

HOUSING — 1 - 8' x 36' airconditioned trailer house, with sleeping and cooking facilities.

