

NE MEXICO OIL CONSERVATION COMMISSION
WELL LOCATION AND ACREAGE DEDICATION PLAT

Form C-12
Supersedes C-128
Effective 1-1-65

All distances must be from the outer boundaries of the Section.

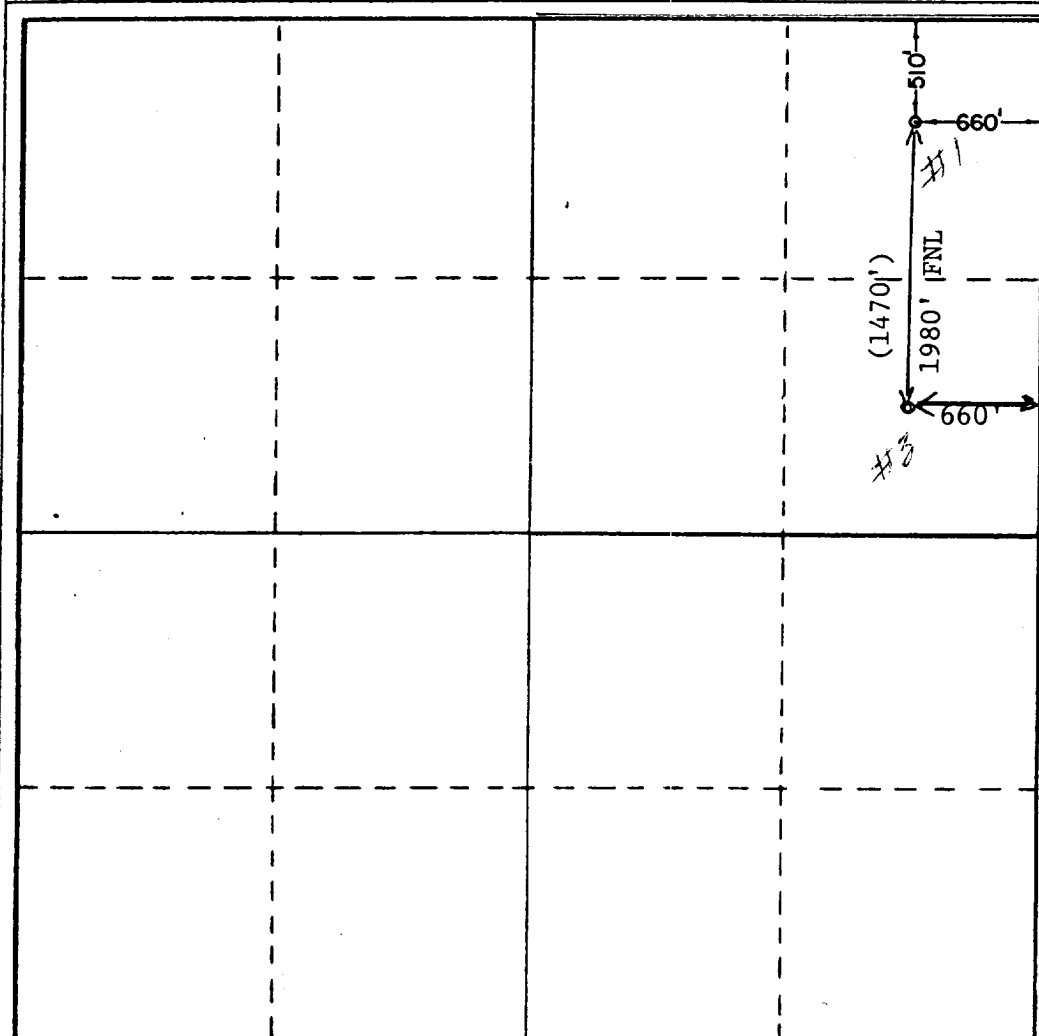
Operator MWJ PRODUCING COMPANY			Lease BAUM 7 STATE		Well No. 1
Unit Letter A	Section 7	Township 14 SOUTH	Range 33 EAST	County LEA	
Actual Footage Location of Well: 510 feet from the NORTH line and 660 feet from the EAST line					
Ground Level Elev. 4270' Gr. Est.	Producing Formation Upper Penn	Pool Baum Upper Penn.		Dedicated Acreage: 160 Acres	

1. Outline the acreage dedicated to the subject well by colored pencil or hachure marks on the plat below.
2. If more than one lease is dedicated to the well, outline each and identify the ownership thereof (both as to working interest and royalty).
3. If more than one lease of different ownership is dedicated to the well, have the interests of all owners been consolidated by communitization, unitization, force-pooling, etc?

☐ Yes ☐ No If answer is "yes," type of consolidation _____

If answer is "no," list the owners and tract descriptions which have actually been consolidated. (Use reverse side of this form if necessary.) _____

No allowable will be assigned to the well until all interests have been consolidated (by communitization, unitization, forced-pooling, or otherwise) or until a non-standard unit, eliminating such interests, has been approved by the Commission.



CERTIFICATION

I hereby certify that the information contained herein is true and complete to the best of my knowledge and belief.

Pat Bishop

Name ~~XXXXXXXXXX~~ Pat Bishop

Position
Agent

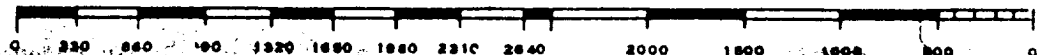
Company
MWJ Producing Company

Date ~~3/25/80~~ 3/29/83

I hereby certify that the well location shown on this plat was plotted from field notes of actual surveys made by me or under my supervision, and that the same is true and correct to the best of my knowledge and belief.

REGISTERED PROFESSIONAL SURVEYOR
No. 3239
MAY 5TH 1980
Ronald J. Eldon

Certificate No. John West 676
Ronald J. Eldon 3239



~~PROCESSED~~

MAR 30 1983

O.C.D.
HOBBS OFFICE