

NEW MEXICO OIL CONSERVATION COMMISSION
WELL LOCATION AND ACREAGE DEDICATION PLAT

Form C-102
Supersedes C-128
Effective 1-1-65

All distances must be from the outer boundaries of the Section

AMENDED FORM

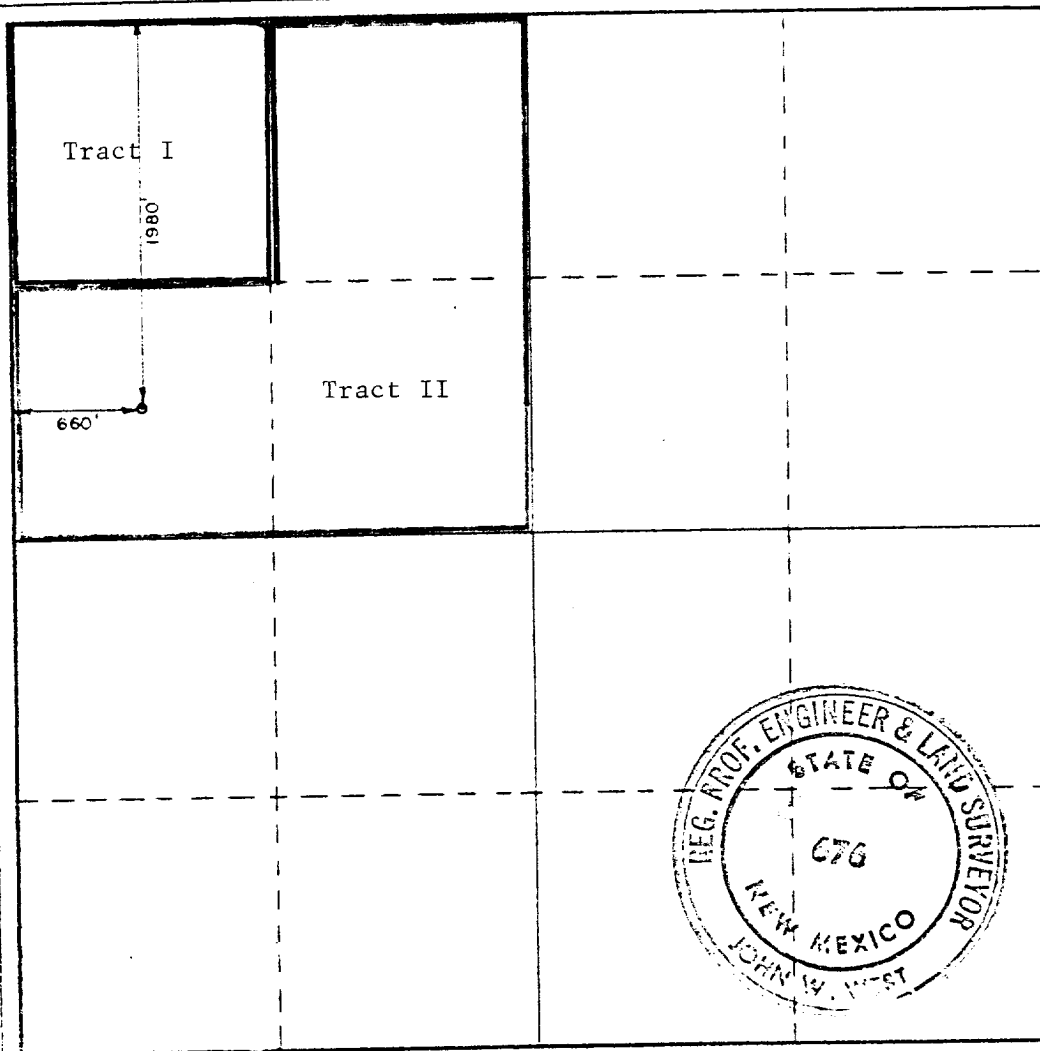
Operator R.L. BURNS CORP.		Lease STATE "32"		Well No. 1
Tract Letter E	Section 32	Township 13 South	Range 33 East	County Lea
Actual Portage Location of Well:				
1980 feet from the North line and 660 feet from the West line				
Ground Level Elev. 4260.7	Producing Formation Bough 'C'	Pool Baum (Upper Penn)	Dedicated Acreage 160 Acres	

1. Outline the acreage dedicated to the subject well by colored pencil or hachure marks on the plat below.
2. If more than one lease is dedicated to the well, outline each and identify the ownership thereof (both as to working interest and royalty). **SEE REVERSE SIDE.**
3. If more than one lease of different ownership is dedicated to the well, have the interests of all owners been consolidated by communitization, unitization, force-pooling, etc?

☐ Yes ☐ No If answer is "yes," type of consolidation _____

If answer is "no," list the owners and tract descriptions which have actually been consolidated. (Use reverse side of this form if necessary.) _____

No allowable will be assigned to the well until all interests have been consolidated (by communitization, unitization, forced-pooling, or otherwise) or until a non-standard unit, eliminating such interests, has been approved by the Commission.



CERTIFICATION

I hereby certify that the information contained herein is true and complete to the best of my knowledge and belief.

Michael L. Boothby
Name
Engineering Supervisor
Position

R. L. Burns Corp.
Company

June 16, 1980
Date

I hereby certify that the well location shown on this plat was plotted from field notes of actual surveys made by me or under my supervision, and that the same is true and correct to the best of my knowledge and belief.

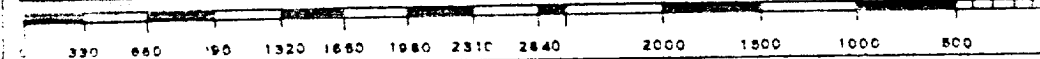
Date Surveyed

2-2-1980

Registered Professional Engineer and/or Land Surveyor

John W. West

Certificate No. **JOHN W. WEST 676**
PATRICK A. ROMERO 8668
Ronald J. Eidson 3239



OIL CONSERVATION DIV.
JUN 20 1980

RECEIVED

STATE '32' #1
NW/4 of Section 32, T-13-S, R-33-E

Tract I - NW/4 NW/4 of Section 32, T-13-S, R-33-E

R. L. Burns Corp.
The State of New Mexico
Hartad Oil Corporation
C. Hayden Atchison
William T. Stokes
Frank Schatz
R. L. Burns Corp.
1.00 WI
1.12500 RI
0.07500 ORI
0.00750 ORI
0.00500 ORI
0.00500 ORI
0.00500 ORI
0.78250 NRI

Tract II - NE/4 NW/4 and S/2 NW/4 of Section 32, T-13-S, R-33-E

R. L. Burns Corp.
The State of New Mexico
C. Hayden Atchison
William T. Stokes
Frank Schatz
R. L. Burns Corp.
1.00 WI
1.12500 RI
0.00750 ORI
0.00500 ORI
0.00500 ORI
0.00500 ORI
0.85750 NRI