

30-025-27179

NEW MEXICO OIL CONSERVATION COMMISSION

Form C-101
Revised 1-1-65

NO. OF COPIES RECEIVED	
DISTRIBUTION	
SANTA FE	
FILE	
U.S.G.S.	
LAND OFFICE	
OPERATOR	

5A. Indicate Type of Lease	
STATE <input checked="" type="checkbox"/>	FEE <input type="checkbox"/>
5. State Oil & Gas Lease No.	
LG-5680	

APPLICATION FOR PERMIT TO DRILL, DEEPEN, OR PLUG BACK

6. Type of Work		7. Unit Agreement Name	
a. Type of Well DRILL <input checked="" type="checkbox"/> DEEPEN <input type="checkbox"/> PLUG BACK <input type="checkbox"/>		8. Farm or Lease Name	
b. Type of Well OIL WELL <input checked="" type="checkbox"/> GAS WELL <input type="checkbox"/> OTHER <input type="checkbox"/>		Bass "ON" State	
c. Name of Operator		9. Well No.	
Yates Petroleum Corporation		2	
d. Address of Operator		10. Undesignated	
207 South 4th Street, Artesia, NM 88210		Baum-Upper Penn	
e. Location of Well		11. County	
UNIT LETTER <u>F</u> LOCATED <u>1980</u> FEET FROM THE <u>North</u> LINE		Lea	
1980 FEET FROM THE <u>West</u> LINE OF SEC. <u>18</u> TWP. <u>13S</u> RGE. <u>33E</u> NMPM			
12. Formation		13. Rotary or C.T.	
9800'		Bo 'C'	
14. Approx. Date Work will start		As soon as approved	
15. Approx. Date Work will start		As soon as approved	

PROPOSED CASING AND CEMENT PROGRAM

SIZE OF HOLE	SIZE OF CASING	WEIGHT PER FOOT	SETTING DEPTH	SACKS OF CEMENT	EST. TOP
17 1/2"	13 3/8"	48# J-55	approx. 400'	400 sx	circulate
11"	8 5/8"	24# J-55	approx. 4200'	1200 sx	circulate
7 7/8"	5 1/2"	17# K & N	approx. 9800'	300 sx.	

Propose to drill a 9800' well and test the Bo 'C' and intermediate horizons. Approximately 400' of surface casing will be set, cement circulated, and approximately 4200' of intermediate casing will be set, cement circulated. If commercial, will case, cement, perforate and stimulate as needed for production.

MUD PROGRAM: FW gel to 400', native mud 4200', water and paper to 7500', starch-driskak KCL to TD.

BOP PROGRAM: BOP's on 8 5/8" casing, tested daily.

GAS NOT DEDICATED

ABOVE SPACE DESCRIBE PROPOSED PROGRAM: IF PROPOSAL IS TO DEEPEN OR PLUG BACK, GIVE DATA ON PRESENT PRODUCTIVE ZONE AND PROPOSED NEW PRODUCTION ZONE. GIVE BLOWOUT PREVENTER PROGRAM, IF ANY.

I hereby certify that the information above is true and complete to the best of my knowledge and belief.

Signed John A. Lopez Title Regulatory Coordinator Date 12-11-80
(This space for State Use)

APPROVED BY James S. Seltzer TITLE SUPERVISOR DISTRICT 1 DATE DEC 11 1980
CONDITIONS OF APPROVAL, IF ANY:

NEW MEXICO OIL CONSERVATION COMMISSION
W. LOCATION AND ACREAGE DEDICATION PLAT

Form C-102
Supersedes C-128
Effective 1-1-65

All distances must be from the outer boundaries of the Section.

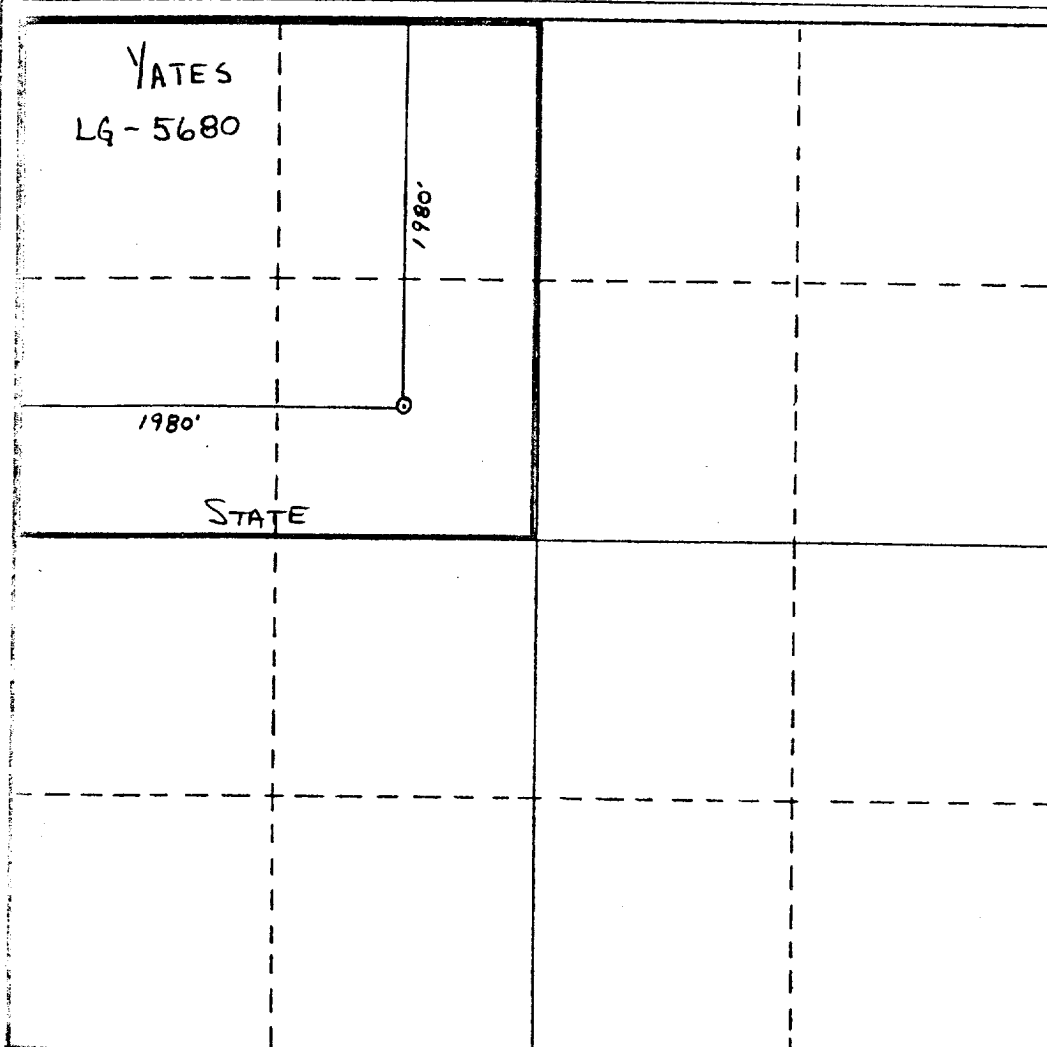
Operator Yates Petroleum Corporation			Lease Bass "ON" State		Well No. 2
Unit Letter F	Section 18	Township 13 South	Range 33 East	County Lea	
Actual Footage Location of Well:					
1980 feet from the North line and		1980 feet from the West line			
Ground Level Elev. 4290	Producing Formation Bough C		Pool Baum-Upper Penn		Dedicated Acreage; 160 Acres

1. Outline the acreage dedicated to the subject well by colored pencil or hachure marks on the plat below.
2. If more than one lease is dedicated to the well, outline each and identify the ownership thereof (both as to working interest and royalty).
3. If more than one lease of different ownership is dedicated to the well, have the interests of all owners been consolidated by communitization, unitization, force-pooling, etc?

☐ Yes ☒ No If answer is "yes," type of consolidation _____

If answer is "no," list the owners and tract descriptions which have actually been consolidated. (Use reverse side of this form if necessary.) _____

No allowable will be assigned to the well until all interests have been consolidated (by communitization, unitization, forced-pooling, or otherwise) or until a non-standard unit, eliminating such interests, has been approved by the Commission.



CERTIFICATION

I hereby certify that the information contained herein is true and complete to the best of my knowledge and belief.

Johnny A. Lopez

Name
Johnny A. Lopez

Position
Regulatory Coordinator

Company
Yates Petroleum Corporation

Date
December 11, 1980

I hereby certify that the well location shown on this plat was plotted from field notes of actual surveys made by me or under my supervision, and that the same is true and correct to the best of my knowledge and belief.

12-11-80

Date Surveyed

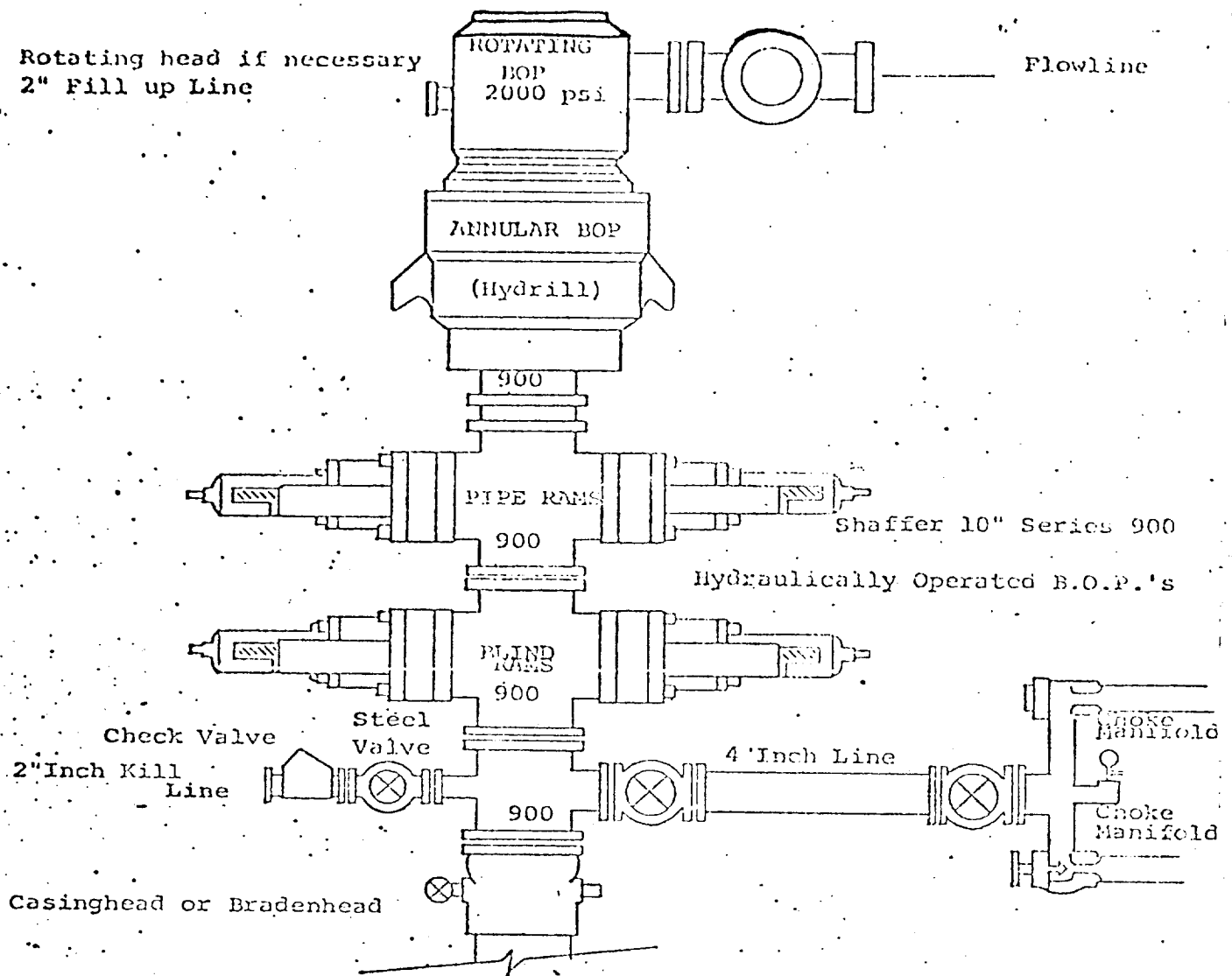
Registered Professional Engineer and/or Land Surveyor
JONES

3640

James H. Jones
Certificate No. 38340

330 660 990 1320 1650 1980 2310 2640 2000 1600 1000 500 0

Rotating head if necessary
2" Fill up Line



THE FOLLOWING CONSTITUTE MINIMUM BLOWOUT PREVENTER REQUIREMENTS

1. All preventers to be hydraulically operated with secondary manual controls installed prior to drilling out from under casing.
2. Choke outlet to be a minimum of 4" diameter.
3. Kill line to be of all steel construction of 2" minimum diameter.
4. All connections from operating manifolds to preventers to be all steel. hole or tube a minimum of one inch in diameter.
5. The available closing pressure shall be at least 15% in excess of that required with sufficient volume to operate the B.O.P.'s.
6. All connections to and from preventer to have a pressure rating equivalent to that of the B.O.P.'s.
7. Inside blowout preventer to be available on rig floor.
8. Operating controls located a safe distance from the rig floor.
9. Hole must be kept filled on trips below intermediate casing. Operator not responsible for blowouts resulting from not keeping hole full.
10. D. P. float must be installed and used below zone of first gas intrusion.

COUNTY	LEA	FIELD	Baum	STATE	NM		
OPR	YATES PETROLEUM CORP.			API	30-025-27179		
NO	2	LEASE	Bass "ON" State	MAP			
	Sec 18, T13S, R33E			CO-ORD			
	1980 FNL, 1980 FWL of Sec				2-1-15 NM		
	13 mi SW/Buckeye			SPD	12-18-80 CMP 1-16-81		
CSG	13 3/8-410-400 sx 8 5/8-4167-2467 sx			WELL CLASS: INIT D FIN D LSE. CODE			
				FORMATION	DATUM	FORMATION	DATUM
	TD 10,300 (CSCO)			PBD			

DRY & ABANDONED

CONTR	Ard #6	OPRS ELEV	4290 GL	PD	9800 RT
-------	--------	-----------	---------	----	---------

12-29-80 F.R. 12-15-80
 (Upper Pennsylvanian)
 AMEND WELL NUMBER & TOWNSHIP: Formerly
 reported as #1 and T18S
 1-7-81 Drlg 8543
 1-14-81 TD 10,300; SI
 1-21-81 TD 10,300; D&A (hold)
 2-2-81 TD 10,300; Dry & Abandoned
 LOG TOPS: Rustler Anhydrite 1725, Yates 2558,
 Queen 3455, Grayburg 3674, San Andres 3958,
 Glorieta 5395, Tubb 6825, Drinkard 6962, Abo
 7601, Wolfcamp 9087, Pennsylvanian 9607, Cisco
 9749
 LOGS RUN: CNL, FDC, DILL
 2-7-81 COMPLETION ISSUED

2-1-15 NM
 IC 30-025-70610-80