

NEW MEXICO OIL CONSERVATION COMMISSION
WELL LOCATION AND ACREAGE DEDICATION PLAT

Form C-102
Supersedes C-128
Effective 1-1-65

All distances must be from the outer boundaries of the Section.

Operator SAMEDAN OIL CORPORATION			Lease Speight		Well No. 1
Unit Letter B	Section 3	Township 13-S	Range 37-E	County Lea	

Actual Footage Location of Well:

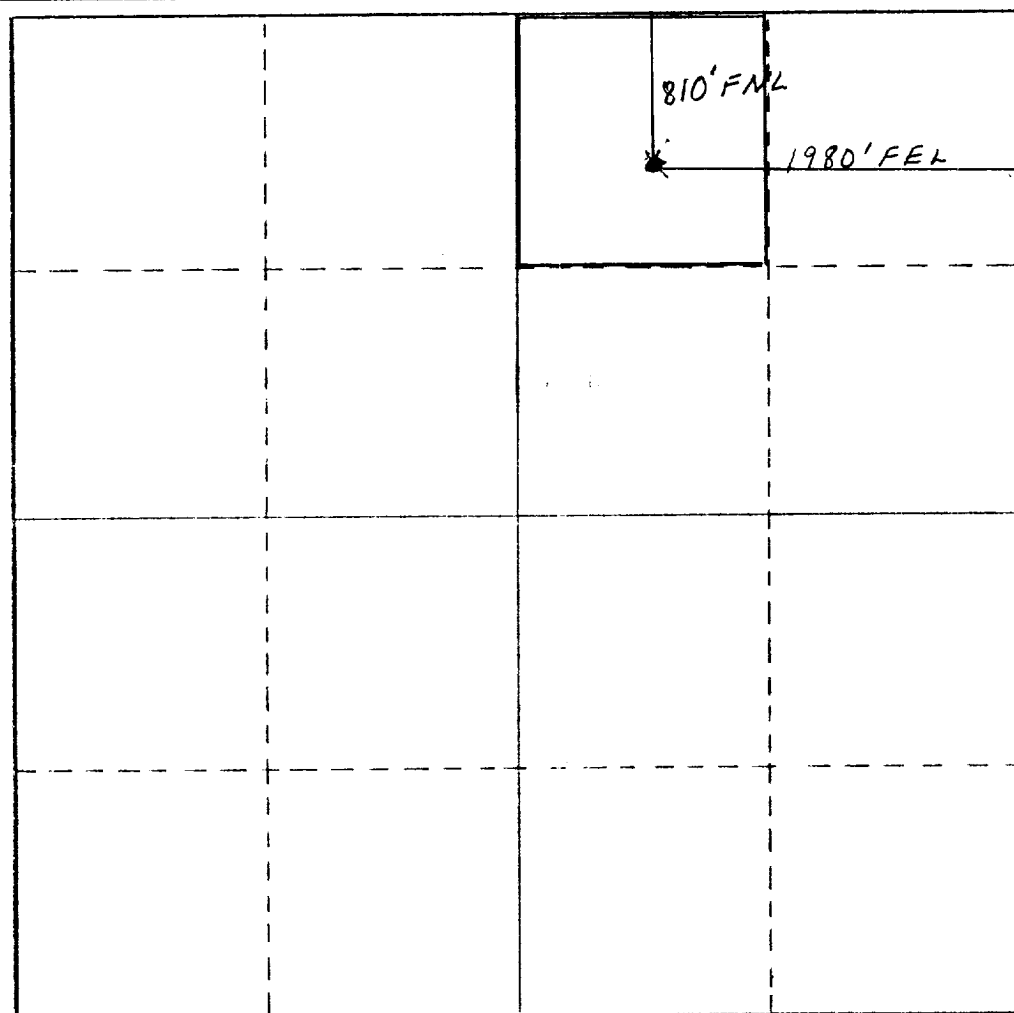
310 feet from the North line and 1980 feet from the East line	
Ground Level Elev. 3387.7'	Producing Formation Devonian
Pool Undesignated	
Dedicated Acreage: 40 Acres	

1. Outline the acreage dedicated to the subject well by colored pencil or hachure marks on the plat below.
2. If more than one lease is dedicated to the well, outline each and identify the ownership thereof (both as to working interest and royalty).
3. If more than one lease of different ownership is dedicated to the well, have the interests of all owners been consolidated by communitization, unitization, force-pooling, etc?

☐ Yes ☐ No If answer is "yes," type of consolidation _____

If answer is "no," list the owners and tract descriptions which have actually been consolidated. (Use reverse side of this form if necessary.) _____

No allowable will be assigned to the well until all interests have been consolidated (by communitization, unitization, forced-pooling, or otherwise) or until a non-standard unit, eliminating such interests, has been approved by the Commission.



CERTIFICATION

I hereby certify that the information contained herein is true and complete to the best of my knowledge and belief.

Vertis Diamond

Name **VERTIS DIAMOND**

Division Clerk

Position

SAMEDAN OIL CORPORATION

Company

November 19, 1981

Date

I hereby certify that the well location shown on this plat was plotted from field notes of actual surveys made by me or under my supervision, and that the same is true and correct to the best of my knowledge and belief.

Date Surveyed

Registered Professional Engineer and/or Land Surveyor

Certificate No.

0 500 650 800 950 1100 1250 1400 1550 1700 1850 2000 2150 2300 2450 2600 2750 2900 3050 3200 3350 3500 0