

NO. OF COPIES RECEIVED	
DISTRIBUTION	
SANTA FE	
FILE	
U.S.G.S.	
LAND OFFICE	
OPERATOR	

NEW MEXICO OIL CONSERVATION COMMISSION

Form C-101  
Revised 1-1-65

30-025-27723

5A. Indicate Type of Lease	
STATE <input checked="" type="checkbox"/>	FEE <input type="checkbox"/>

5. State Oil & Gas Lease No.

APPLICATION FOR PERMIT TO DRILL, DEEPEN, OR PLUG BACK

1a. Type of Work		7. Unit Agreement Name	
b. Type of Well DRILL <input checked="" type="checkbox"/> DEEPEN <input type="checkbox"/> PLUG BACK <input type="checkbox"/> OIL WELL <input checked="" type="checkbox"/> GAS WELL <input type="checkbox"/> OTHER <input type="checkbox"/> SINGLE ZONE <input type="checkbox"/> MULTIPLE ZONE <input type="checkbox"/>		8. Farm or Lease Name Samantha "7" State	
2. Name of Operator Maralo, Inc.		9. Well No. 2	
3. Address of Operator P. O. Box 832, Midland, Texas 79702 0832		10. Field and Pool, or Wildcat Baum-Upper Pennsylvania	
4. Location of Well UNIT LETTER K LOCATED 1980 FEET FROM THE South LINE AND 1914 FEET FROM THE West LINE OF SEC. 7 TWP. 14S RGE. 33E NMPM		11. Designation UNDESIGNATED	
12. County Lea			
19. Proposed Depth 10,150'		19A. Formation Pennsylvanian	
20. Rotary or C.T. Rotary			
21. Elevations (Show whether DF, RT, etc.) 4260.0 GR		21A. Kind & Status Plug. Bond Blanket	
21B. Drilling Contractor McVay Drlg.		22. Approx. Date Work will start January 30, 1982	

23.

PROPOSED CASING AND CEMENT PROGRAM

SIZE OF HOLE	SIZE OF CASING	WEIGHT PER FOOT	SETTING DEPTH	SACKS OF CEMENT	EST. TOP
17 1/2"	13 3/8"	40#	400'	400 sx.	Surface
12 1/2"	8 5/8"	24# & 28#	4,100'	2000 sx.	Surface
7 7/8"	5 1/2"	15 1/2 & 17#	10,100'	600 sx.	4,000'

APPROVAL VALID FOR 180 DAYS  
PERMIT EXPIRES 7/28/82  
UNLESS DRILLING UNDERWAY

IN ABOVE SPACE DESCRIBE PROPOSED PROGRAM: IF PROPOSAL IS TO DEEPEN OR PLUG BACK, GIVE DATA ON PRESENT PRODUCTIVE ZONE AND PROPOSED NEW PRODUCTIVE ZONE. GIVE BLOWOUT PREVENTER PROGRAM, IF ANY.

I hereby certify that the information above is true and complete to the best of my knowledge and belief.

Signed Brenda Caffman Title Production Clerk Date January 26, 1982

(This space for State Use)

Orig. Signed by

Jerry Sexton

APPROVED BY Dick L. Sexton TITLE \_\_\_\_\_ DATE JAN 28 1982

CONDITIONS OF APPROVAL, IF ANY:

**N MEXICO OIL CONSERVATION COMMISS**  
**WELL LOCATION AND ACREAGE DEDICATION PLAT**

Form C-102  
 Supersedes C-128  
 Effective 1-1-65

All distances must be from the outer boundaries of the Section

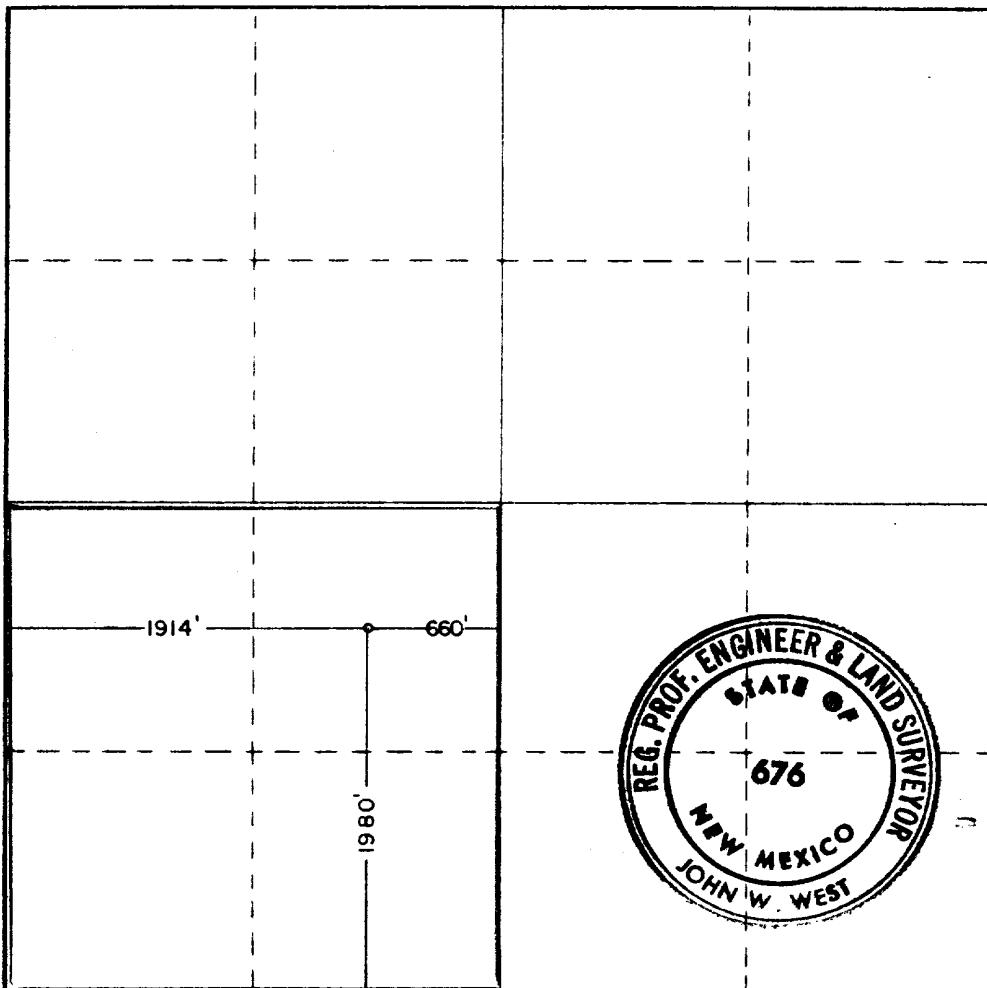
Operator <b>MARALO INC.</b>			Lease <b>SAMANTHA STATE 7</b>		Well No. <b>2</b>
Tract Letter <b>K</b>	Section <b>7</b>	Township <b>14 SOUTH</b>	Range <b>33 EAST</b>	County <b>LEA</b>	
Actual Footage Location of Well: <b>1980</b> feet from the <b>SOUTH</b> line and <b>1914</b> feet from the <b>WEST</b> line					
Ground Level Elev. <b>4260.0</b>	Producing Formation <b>Pennsylvanian</b>		Pool <b>Baum-Upper Pennsylvanian</b>	Dedicated Acreage: <b>160</b> Acres	

1. Outline the acreage dedicated to the subject well by colored pencil or hachure marks on the plat below.
2. If more than one lease is dedicated to the well, outline each and identify the ownership thereof (both as to working interest and royalty).
3. If more than one lease of different ownership is dedicated to the well, have the interests of all owners been consolidated by communitization, unitization, force-pooling, etc?

☐ Yes    ☐ No    If answer is "yes," type of consolidation \_\_\_\_\_

If answer is "no," list the owners and tract descriptions which have actually been consolidated. (Use reverse side of this form if necessary.) \_\_\_\_\_

No allowable will be assigned to the well until all interests have been consolidated (by communitization, unitization, forced-pooling, or otherwise) or until a non-standard unit, eliminating such interests, has been approved by the Commission.



**CERTIFICATION**

I hereby certify that the information contained herein is true and complete to the best of my knowledge and belief.

*Brenda Coffman*

Name

**Brenda Coffman**

Position

**Production Clerk**

Company

**Maralo, Inc.**

Date

**January 26, 1982**

I hereby certify that the well location shown on this plat was plotted from field notes of actual surveys made by me or under my supervision, and that the same is true and correct to the best of my knowledge and belief.

Date Surveyed

**1-21-82**

Registered Professional Engineer and/or Land Surveyor

*John W. West*

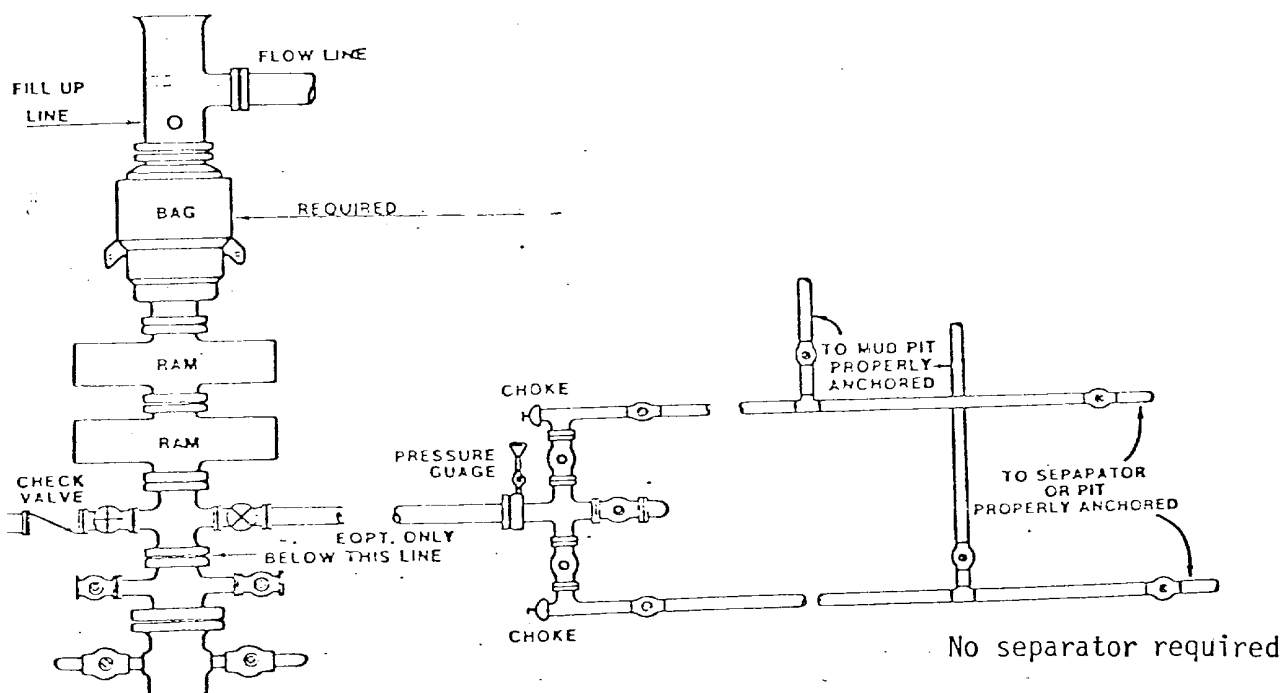
Certificate No.	<b>JOHN W. WEST</b>	<b>676</b>
	<b>PATRICK A. ROMERO</b>	<b>6063</b>
	<b>Ronald J. Eldson</b>	<b>3239</b>

1. BOP'S TO BE FLUID OPERATE. BOP'S AND ALL FITTINGS MUST BE IN GOOD CONDITION AND RATED AT 3000 PSI W.P. MINIMUM.
2. EQUIPMENT THROUGH WHICH BIT MUST PASS SHALL BE AT LEAST AS LARGE AS CASING SIZE BEING DRILLED THROUGH.
3. KELLY COCK IS REQUIRED AND SHALL BE 3000 PSI W.P. MINIMUM.
4. HYDRIL OR COMPARABLE SAFETY VALVE SHALL BE AVAILABLE ON RIG FLOOR WITH CONNECTIONS OR SUBS TO FIT ANY TOOL JOINT IN THE STRING. VALVE TO BE FULL BORE 3000 PSI W.P. MINIMUM.
5. VALVES UPSTREAM OF CHOKES, INCLUDING KILL LINE VALVES, WILL BE GATE VALVES, CAMERON TYPE F OR EQUIVALENT. VALVES DOWNSTREAM OF CHOKES MAY BE GATE OR PLUG VALVES.
6. VALVE NEXT TO SPOOL MUST BE 4". VALVES BETWEEN CROSS AND CHOKES MAY BE 3" OR 4". VALVES DOWNSTREAM OF CHOKES MAY BE 2". VALVES ON KILL LINE MAY BE 2".
7. LINE FROM SPOOL TO CROSS MUST BE 4". EQUIPMENT FROM CROSS TO CHOKE MAY BE 3" OR 4". LINES DOWNSTREAM OF CHOKES MAY BE 2". KILL LINE MAY BE 2".
8. ALL EQUIPMENT UPSTREAM OF CHOKES, INCLUDING KILL LINE EQUIPMENT, MUST BE FLANGED AND RATED 3000 PSI W.P. MINIMUM (VALVE AND GAUGE FROM TAPPED FLANGED MAY BE SCREW END). ALL EQUIPMENT DOWNSTREAM OF CHOKE MAY BE SCREW END. PRESSURE GAUGE WILL BE CAMERON OR EQUIVALENT. CHOKES WILL BE ONE POSITIVE AND ONE ADJUSTABLE.
9. BLOWOUT PREVENTOR CLOSING UNIT EQUIPMENT TO INCLUDE ACCUMULATOR CAPABLE OF CLOSING, OPENING AND CLOSING THE BAG AND PIPE RAMS WITH A MINIMUM REMAINING PRESSURE OF 1200 PSI. OPERATING TIME FOR CLOSING SHALL NOT BE GREATER THAN ONE MINUTE.
10. THE ACCUMULATOR MUST BE LOCATED AT LEAST 50 FEET FROM THE WELL, WITH CONTROLS PROPERLY LABELED. FLUID LINES FROM ACCUMULATOR TO BOP'S SHALL BE STEEL, AND RATED AT OR ABOVE MAXIMUM ACCUMULATOR PRESSURE.
11. FILL UP LINE MUST BE STEEL. KILL LINE CANNOT BE USED FOR FILL UP LINE.
12. USE RAMS IN FOLLOWING POSITIONS: \*

	<u>DRILLING</u>	<u>RUNNING CASING</u>
UPPER RAM	DRILL PIPE	CASING
LOWER RAM	BLIND	BLIND

DISTRICT SUPERINTENDENT MAY REVERSE LOCATION OF RAMS.

13. EXTENSIONS AND HAND WHEELS TO BE PROPERLY INSTALLED AND BRACED AT ALL TIMES.



RECEIVED

JAN 27 1982

OIL CONSERVATION DIV.

473