

All distances must be from the outer boundaries of the Section.

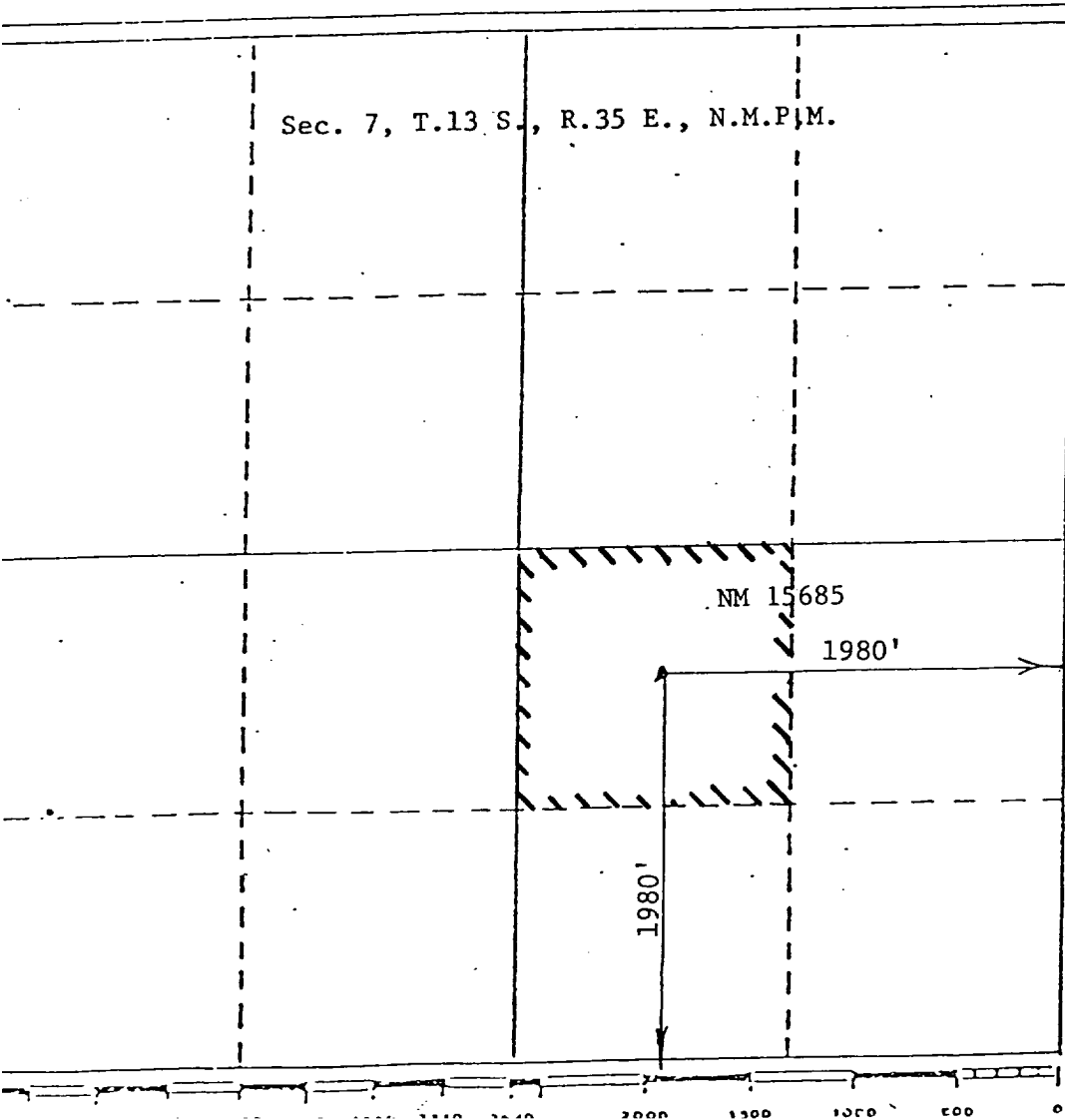
Operator EUROPA ENERGY, INC. Langley Resources		Lease Key Federal		Well No. 1
Section 7	Township 13 South	Range 35 East	County Lea	
Actual Postage Location of Well: 1980 feet from the South line and 1980 feet from the East line				
Ground Level Elev. 4102	Producing Formation Devonian	Pool Wildcat	Dedicated Acreage: 40 Acres	

1. Outline the acreage dedicated to the subject well by colored pencil or hatchure marks on the plat below.
2. If more than one lease is dedicated to the well, outline each and identify the ownership thereof (both as to working interest and royalty). Single Lease
3. If more than one lease of different ownership is dedicated to the well, have the interests of all owners been consolidated by communitization, unitization, force-pooling, etc?

☐ Yes ☐ No If answer is "yes," type of consolidation _____

If answer is "no," list the owners and tract descriptions which have actually been consolidated. (Use reverse side of this form if necessary.) _____

No allowable will be assigned to the well until all interests have been consolidated (by communitization, unitization, forced-pooling, or otherwise) or until a non-standard unit, eliminating such interests, has been approved by the Division.



CERTIFICATION

I hereby certify that the information contained herein is true and complete to the best of my knowledge and belief.

Jerry W. Long
Name
JERRY W. LONG

Position

Agent

Company

EUROPA ENERGY, INC.

Date

June 18, 1982

I hereby certify that the well location shown on this plat was plotted from field notes of actual surveys made by me or under my supervision, and that the same is true and correct to the best of my knowledge and belief.

Date Surveyed **June 14, 1982**

Registered Professional Engineer and/or Land Surveyor

John D. Jaques, P.E. & L.S.
Certificate No. **6290**

RECEIVED
JUL 1 1982
O.C.D.
HOBBS OFFICE