

APPROVED BY ORIGINAL SIGNED BY TITLE DATE JUL 8 1982
 CONDITIONS OF APPROVAL, IF ANY:
JERRY SEXTON
DISTRICT 1 SUPR.

RECEIVED

JUL 7 1982

O.C.D.
HOBBS OFFICE

**NEW KICO OIL CONSERVATION COMMISSION
WELL LOCATION AND ACREAGE DEDICATION PLAT**

Form C-102
Supersedes C-128
Effective 1-1-65

All distances must be from the outer boundaries of the Section

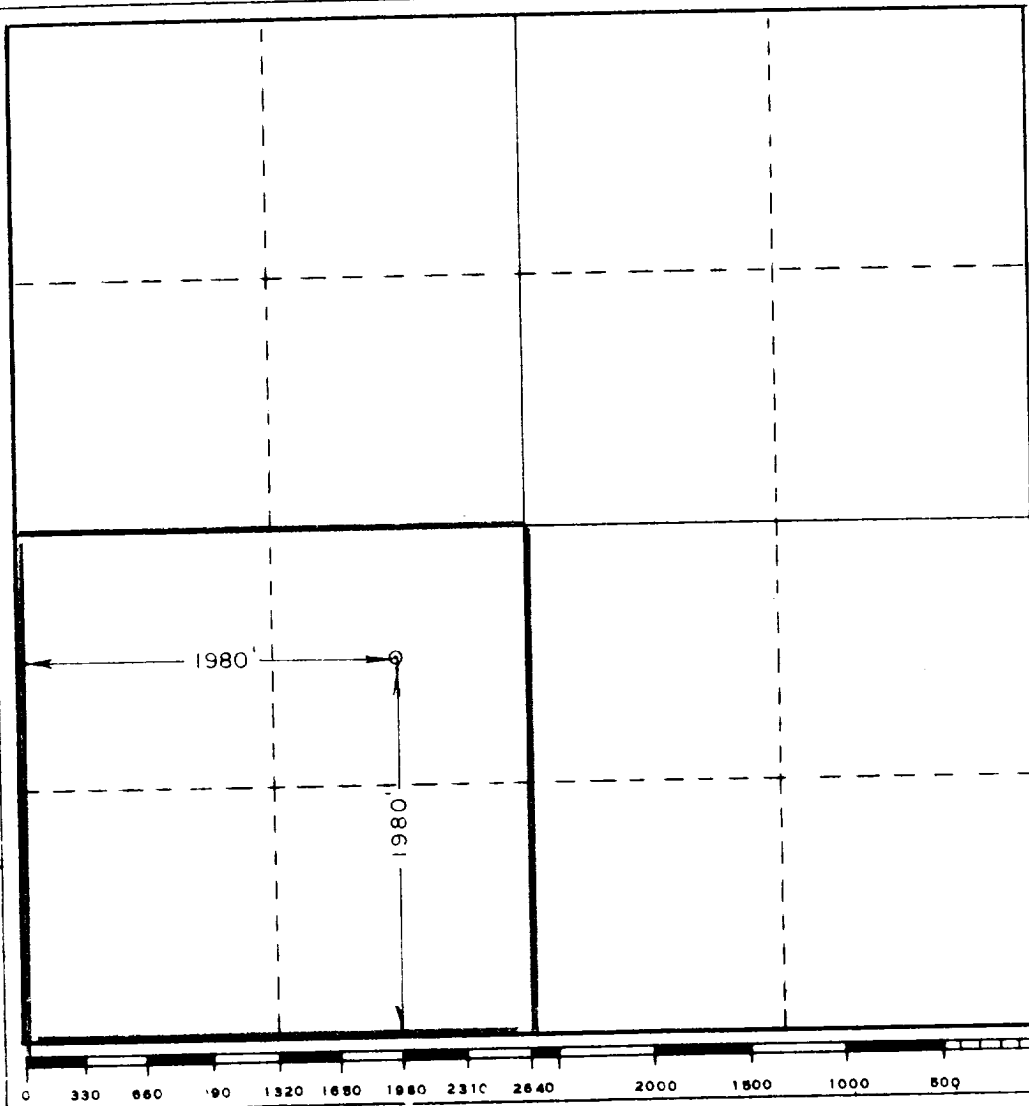
Operator MWJ Prod. Co.			Lease Baum 17A State Lea		Well No. 1
Tract Letter K	Section 17	Township 14 South	Range 33 East	County	
Actual Footage Location of Well: 1980 feet from the South line and 1980 feet from the West line					
Ground Level Elev. 4251'	Producing Formation Upper Penn		Pool Baum Upper Penn		Dedicated Acreage 160

1. Outline the acreage dedicated to the subject well by colored pencil or hatchure marks on the plat below.
2. If more than one lease is dedicated to the well, outline each and identify the ownership thereof (both as to working interest and royalty).
3. If more than one lease of different ownership is dedicated to the well, have the interests of all owners been consolidated by communitization, unitization, force-pooling, etc?

☐ Yes ☐ No If answer is "yes," type of consolidation _____

If answer is "no," list the owners and tract descriptions which have actually been consolidated (Use reverse side of this form if necessary.) _____

No allowable will be assigned to the well until all interests have been consolidated (by communitization, unitization, forced-pooling, or otherwise) or until a non-standard unit, eliminating such interests, has been approved by the Commission.



CERTIFICATION

I hereby certify that the information contained herein is true and complete to the best of my knowledge and belief.

Pat Bishop
Name

Pat Bishop
Position

Agent
Company

MWJ Producing Company
Date

July 2, 1982

I hereby certify that the well location shown on this plat was plotted from field notes of actual surveys made by me or under my supervision, and that the same is true and correct to the best of my knowledge and belief.

Date Survey

Registered Professional Engineer and Land Surveyor

3239
Donald J. Gibson
Certificate No. **676**
State of **PA**
6463
3239

RECEIVED
JUL 7 1982
G.C.D.
HOBBS OFFICE

