

NO. OF COPIES RECEIVED	
DISTRIBUTION	
SANTA FE	
FILE	
U.S.G.S.	
LAND OFFICE	
OPERATOR	

P. O. BOX 2088
SANTA FE, NEW MEXICO 87501

5A. Indicate Type of Lease
STATE ☒ FEDERAL ☐
5. State Oil & Gas Lease No.
LC-814

APPLICATION FOR PERMIT TO DRILL, DEEPEN, OR PLUG BACK

Type of Work
Type of Well DRILL ☒ DEEPEN ☐ PLUG BACK ☐
OIL WELL ☒ GAS WELL ☐ OTHER ☐ SINGLE ZONE ☐ MULTIPLE ZONE ☐

Name of Operator

Yates Petroleum Corporation
Address of Operator

207 S. 4th, Artesia, New Mexico 88210
Location of Well UNIT LETTER BC LOCATED 660 FEET FROM THE North LINE

1980 FEET FROM THE West LINE OF SEC. 21 TWP. 14S RGE. 33E NMPM

7. Unit Agreement Name

8. Farm or Lease Name

Woodpecker "SY" St.

9. Well No.

4

1. Undesignated Wildcat

12. County

Lea

Elevations (Show whether DF, KT, etc.) 4218.6' GL	21A. Kind & Status Plug. Bond Blanket	19. Proposed Depth 10,200'	19A. Formation Permo Penn	20. Rotary or C.T. Rotary
		21B. Drilling Contractor Ard	22. Approx. Date Work will start ASAP	

PROPOSED CASING AND CEMENT PROGRAM

SIZE OF HOLE	SIZE OF CASING	WEIGHT PER FOOT	SETTING DEPTH	SACKS OF CEMENT	EST. TOP
17 1/2"	13 3/8"	48# J-55	450'	400 sx	circulated
12 1/4"	8 5/8"	24# J-55	4200'	1300 sx	400'
7 7/8"	5 1/2"	17# N-80-L	TD	450 sx	9200'
		17# K-55-L			
		17# K-55-S			
		17# N-80-L			

We propose to drill a 10,150' well and test the Permo-Penn and intermediate formations. Approximately 450' of surface casing will be set and cemented circulated and approximately 4200' of intermediate will be set and cement circulated back to about 400'. Production casing will be set to TD and cemented back to approximately 9200'.

MUD PROGRAM: FW gel to 450' native mud 4200', water & paper to 7500', starch-driskpak-KCL to TD.

BOP PROGRAM: BOP's will be installed at the offste and tested daily.

ABOVE SPACE DESCRIBE PROPOSED PROGRAM; IF PROPOSAL IS TO DEEPEN OR PLUG BACK, GIVE DATA ON PRESENT PRODUCTIVE ZONE AND PROPOSED NEW PRODU-
ZONE. GIVE BLOWOUT PREVENTER PROGRAM, IF ANY.

I hereby certify that the information above is true and complete to the best of my knowledge and belief.

Signed Cy Carver Title Regulatory Coordinator Date 9/16/82

(This space for State Use)

ORIGINAL SIGNED BY

JERRY SEXTON

APPROVED BY _____ TITLE _____ DATE _____

CONDITIONS OF APPROVAL, IF ANY

SEP 20 1982

APPROVAL VALID FOR 180 DAYS
PERMIT EXPIRES 3/20/83
UNLESS DRILLING UNDERWAY

RECEIVED

SEP 20 1982

O.C.D.
HOBBS OFFICE

NEW MEXICO OIL CONSERVATION COMMISSION
WELL LOCATION AND ACREAGE DEDICATION PLAT

Form C-102
Supersedes C-128
Effective 1-1-65

All distances must be from the outer boundaries of the Section.

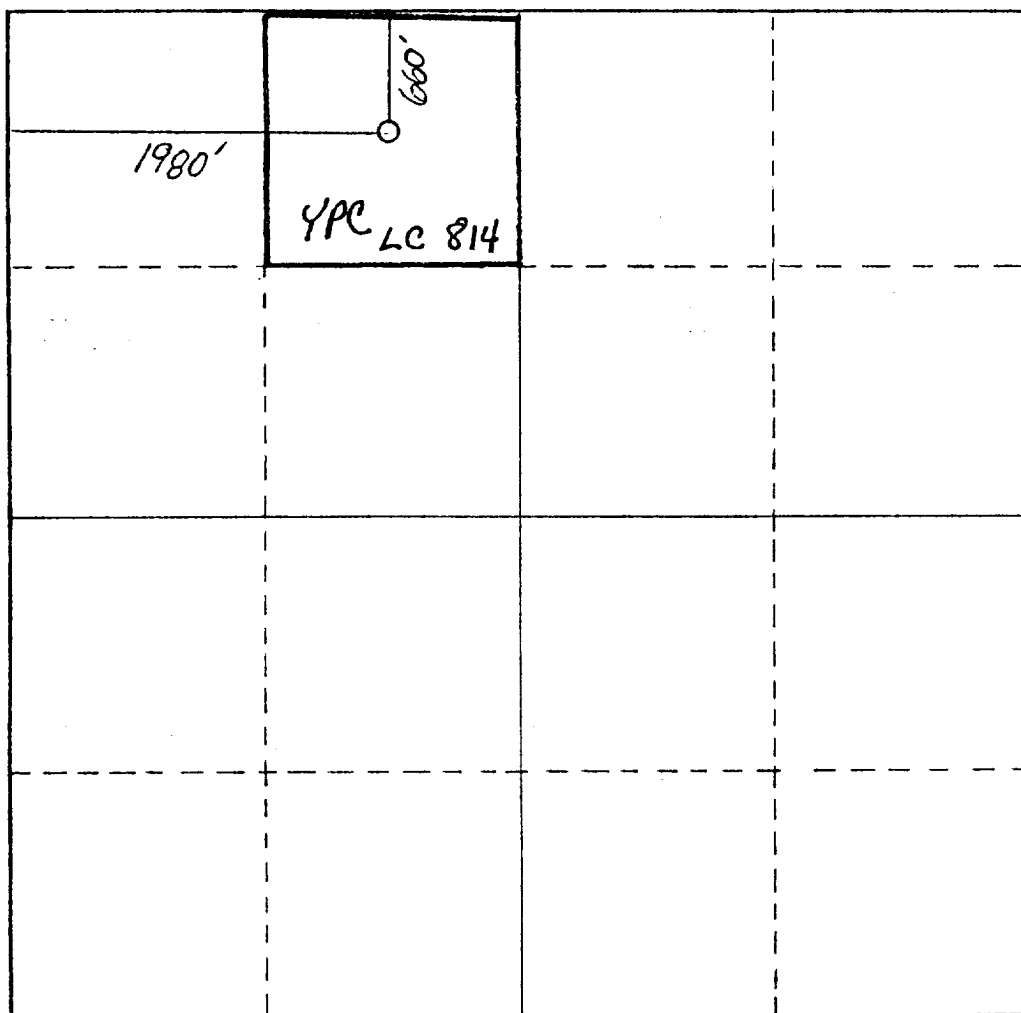
Operator YATES PETROLEUM CORPORATION			Lease Woodpecker "SY" State		Well No. 4
Unit Letter B/C	Section 21	Township 14 South	Range 33 East	County Lea	
Actual Footage Location of Well: 660 feet from the North line and 1980 feet from the West line					
Ground Level Elev. 4218.6' GL	Producing Formation PERMO-Penn		Pool UNDESIGNATED	Dedicated Acreage: 40 Acres	

1. Outline the acreage dedicated to the subject well by colored pencil or hachure marks on the plat below.
2. If more than one lease is dedicated to the well, outline each and identify the ownership thereof (both as to working interest and royalty).
3. If more than one lease of different ownership is dedicated to the well, have the interests of all owners been consolidated by communitization, unitization, force-pooling, etc?

☐ Yes ☐ No If answer is "yes," type of consolidation _____

If answer is "no," list the owners and tract descriptions which have actually been consolidated. (Use reverse side of this form if necessary.) _____

No allowable will be assigned to the well until all interests have been consolidated (by communitization, unitization, forced-pooling, or otherwise) or until a non-standard unit, eliminating such interests, has been approved by the Commission.



CERTIFICATION

I hereby certify that the information contained herein is true and complete to the best of my knowledge and belief.

Cy Cowan

Name

Cy Cowan

Position

Regulatory Coordinator

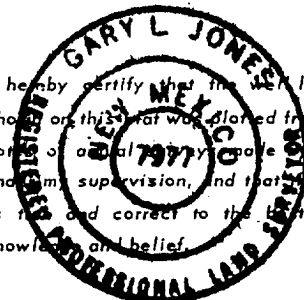
Company

Yates Petroleum Corp.

Date

9/16/82

I hereby certify that the well location shown on this plat was plotted from field notes of actual survey made by me or under my supervision, and that the same is true and correct to the best of my knowledge and belief.



Date Surveyed

September 15, 1982

Registered Professional Engineer and/or Land Surveyor

Day of Shaw

Certificate No.

7977

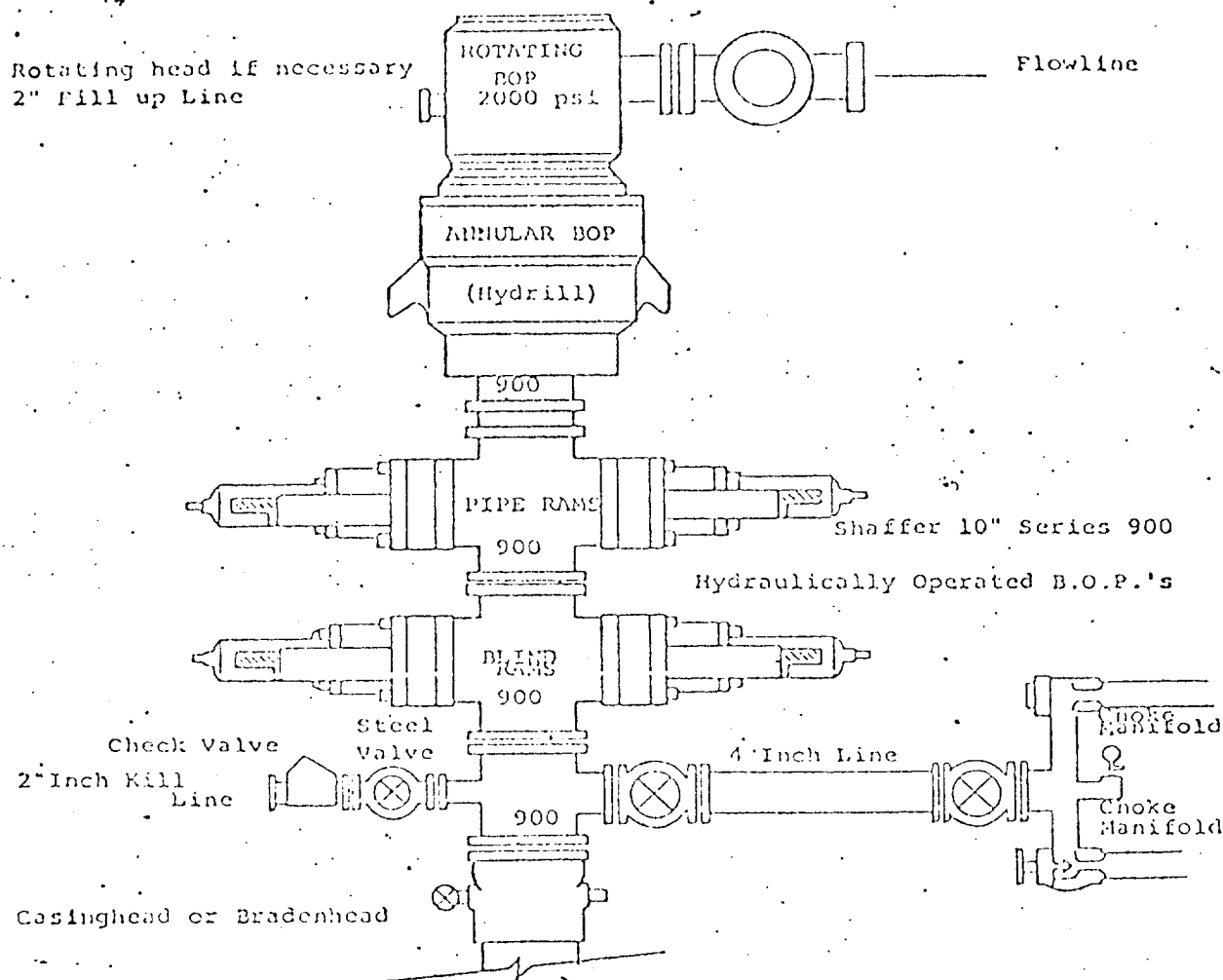
0 330 660 990 1320 1650 1980 2310 2640 2000 1500 1000 500 0

RECEIVED

SEP 20 1982

O.C.D.
HOBBS OFFICE

E. HIBIT B



THE FOLLOWING CONSTITUTE MINIMUM BLOWOUT PREVENTER REQUIREMENTS

1. All preventers to be hydraulically operated with secondary manual controls installed prior to drilling out from under casing.
2. Choke outlet to be a minimum of 4" diameter.
3. Kill line to be of all steel construction of 2" minimum diameter.
4. All connections from operating manifolds to preventers to be all steel, hole or tube a minimum of one inch in diameter.
5. The available closing pressure shall be at least 15% in excess of that required with sufficient volume to operate the B.O.P.'s.
6. All connections to and from preventer to have a pressure rating equivalent to that of the B.O.P.'s.
7. Inside blowout preventer to be available on rig floor.
8. Operating controls located a safe distance from the rig floor.
9. Hole must be kept filled on trips below intermediate casing. Operator not responsible for blowouts resulting from not keeping hole full.
10. D. P. float must be installed and used below zone of first gas intrusion.

RECEIVED

SEP 20 1982

G.C.D.
HOBBS OFFICE

173