

NEW MEXICO OIL CONSERVATION COMMISSION
WELL LOCATION AND ACREAGE DEDICATION PLAT

Form C-102
Supersedes C-128
Effective 1-1-85

All distances must be from the outer boundaries of the Section.

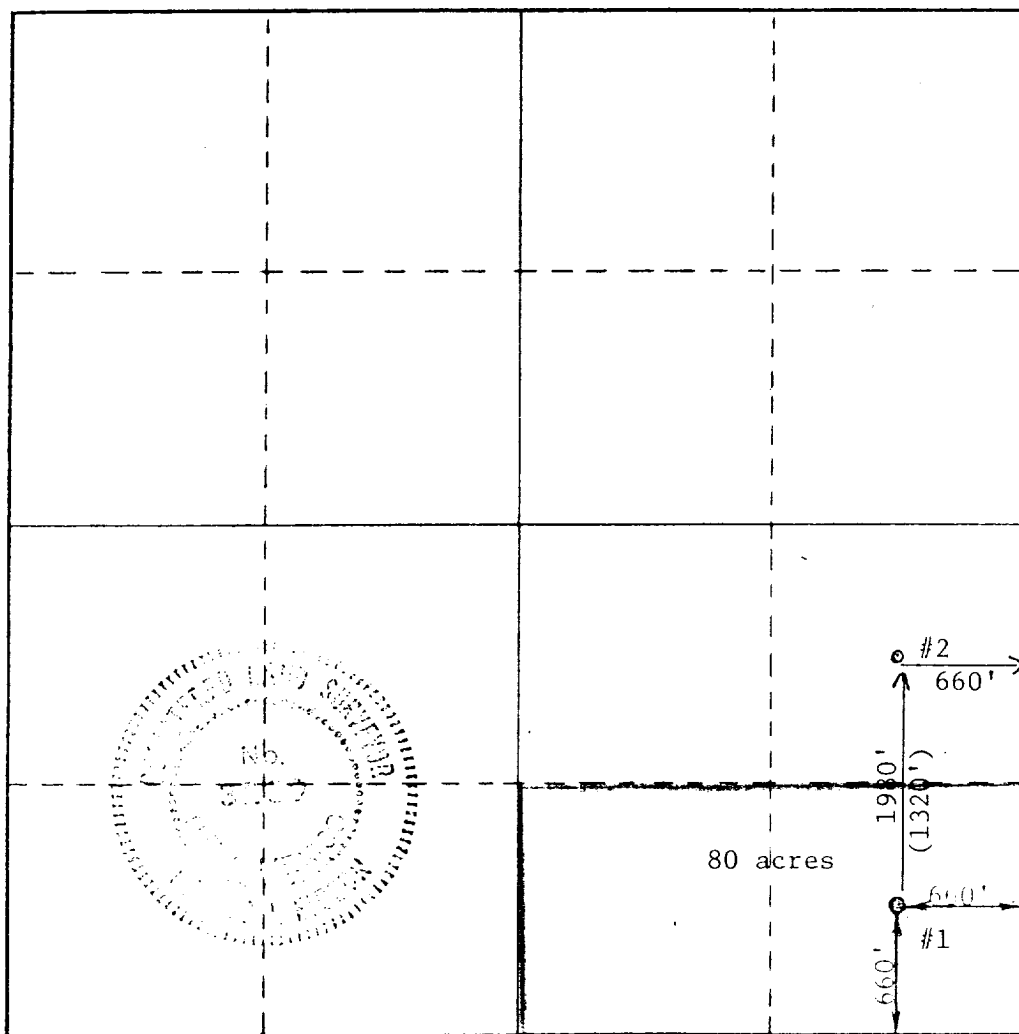
Operator M W J Producing Company			Lease Baum 17 B State Com		Well No. # 1
Unit Letter P	Section 17	Township 14 South	Range 33 East	County Lea	
Actual Footage Location of Well: 660' feet from the South line and 660' feet from the East line					
Ground Level Elev. 4230'	Producing Formation Penn	Pool Baum Upper Penn		Dedicated Acreage: 80	

1. Outline the acreage dedicated to the subject well by colored pencil or hachure marks on the plat below.
2. If more than one lease is dedicated to the well, outline each and identify the ownership thereof (both as to working interest and royalty).
3. If more than one lease of different ownership is dedicated to the well, have the interests of all owners been consolidated by communitization, unitization, force-pooling, etc?

☒ Yes ☐ No If answer is "yes," type of consolidation communitization

If answer is "no," list the owners and tract descriptions which have actually been consolidated. (Use reverse side of this form if necessary.)

No allowable will be assigned to the well until all interests have been consolidated (by communitization, unitization, forced-pooling, or otherwise) or until a non-standard unit, eliminating such interests, has been approved by the Commission.



CERTIFICATION

I hereby certify that the information contained herein is true and complete to the best of my knowledge and belief.

Name

Pat Drexler

Position

Agent

Company

MWJ PRODUCING COMPANY

Date

4/22/85

I hereby certify that the well location shown on this plat was plotted from field notes of actual surveys made by me or under my supervision, and that the same is true and correct to the best of my knowledge and belief.

Date Surveyed

October 27, 1982

Registered Professional Engineer and Land Surveyor

Ronald J. Eidson

Certificate No. JOHN W. WEST 676
PATRICK A. ROMERO 6663
Ronald J. Eidson 3239

0 330 660 990 1320 1650 1980 2310 2640 2970 3300 3630 3960 4290 4620 4950 5280 5610 5940 6270 6600

REMOVED

APR 24 1985

U.S. DEPT. OF JUSTICE
HOBBS OFFICE