

Submit 3 Copies To Appropriate
District Office
DISTRICT I
1625 N. French Dr., Hobbs, NM 88240
DISTRICT II
811 South First, Artesia NM 88210
DISTRICT III
1000 Rio Brazos Rd., Aztec, NM 87410
District IV
2040 S. Pacheco, Santa Fe, NM 87505

State of New Mexico
Energy, Minerals and Natural Resources

Form C-103
Revised March 25, 1999

OIL CONSERVATION DIVISION
2040 South Pacheco
Santa Fe, NM 87505

WELL API NO.
30-025-28082

5. Indicate Type of Lease
STATE ☒ FEE ☐

6. State Oil & Gas Lease No.
K-3657

7. Lease Name or Unit Agreement Name:

State of NM T

8. Well No. 3

9. Pool name or Wildcat
Baum Upper Penn

SUNDRY NOTICES AND REPORTS ON WELLS

(DO NOT USE THIS FORM FOR PROPOSALS TO DRILL OR TO DEEPEN OR PLUG BACK TO A DIFFERENT RESERVOIR. USE "APPLICATION FOR PERMIT" (FORM C-101) FOR SUCH PROPOSALS)

1. Type of Well:
Oil Well ☐ Gas Well ☒ Other ☐

2. Name of Operator
Louis Dreyfus Natural Gas Corporation

3. Address of Operator 14000 Quail Springs Parkway, Suite 600
Oklahoma City, OK 73134

4. Well Location
Unit letter D : 660 feet from the North line and 520 feet from the West line

Section 4 Township 14S Range 33E NMPM Lea County

10. Elevation (Show whether DF, RKB, RT, GR, etc.)
4241'

11. Check Appropriate Box to Indicate Nature of Notice, Report or Other Data

NOTICE OF INTENTION TO:

PERFORM REMEDIAL WORK ☐ PLUG AND ABANDON ☒
TEMPORARILY ABANDON ☐ CHANGE PLANS ☐
PULL OR ALTER CASING ☐ MULTIPLE COMPLETION ☐

OTHER: ☐

SUBSEQUENT REPORT OF:

REMEDIAL WORK ☐ ALTERING CASING ☐
COMMENCE DRILLING OPNS. ☐ PLUG AND ABANDONMENT ☐
CASING TEST AND CEMENT JOB ☐

OTHER: ☐

12. Describe proposed or completed operations. (Clearly state all pertinent details, and give pertinent dates, including estimated date of starting any proposed work). SEE RULE 1103. For Multiple Completions: Attach wellbore diagram of proposed completion or recompilation.

Set CIBP @ 9,675' (<75' above perfs @ 9,732'), tag CIBP with bailer, dump bail 35' cement. Circulate salt gel mud consisting of at least 9.5 pound brine with 25 pounds of gel per barrel between all plugs, every 3,000' spot 25 sx cement plug (1" at 6,640'). Circulate salt gel mud up to 4,050', cut and recover 5 1/2" at 4,080', spot 100' cement plug to cover 8 5/8" (4,050' - 4,150') casing shoe and 5 1/2" stub, tag plug. Circulate salt gel mud up to 1,050', spot 25 sx cement plug. Circulate salt gel mud to 370', set 100' cement plug across 13 3/8" shoe from 290' - 390' in 8 5/8" casing. Circulate salt mud up to 60' from surface, then set 10 sx cement plug to surface. Cut csg off 3' below ground level, weld plate on top with appropriate description, rect steel marker at leae 4" in diameter and at least 4' above ground level.

See Attached Worksheet.

I hereby certify that the information above is true and complete to the best of my knowledge and belief.

SIGNATURE Carla Christian TITLE Regulatory Technician DATE 12/12/00

Type or print name Carla Christian Telephone No. (405) 749-5263

(This space for State use)

APPROVED BY ORIGINAL SIGNED BY TITLE DATE
Conditions of approval, if any: FIELD REP. !!

THE COMMISSION MUST BE NOTIFIED 24 HOURS PRIOR TO THE BEGINNING OF PLUGGING OPERATIONS FOR THE C-103 TO BE APPROVED.

PLUGGING & ABANDONMENT WORKSHEET

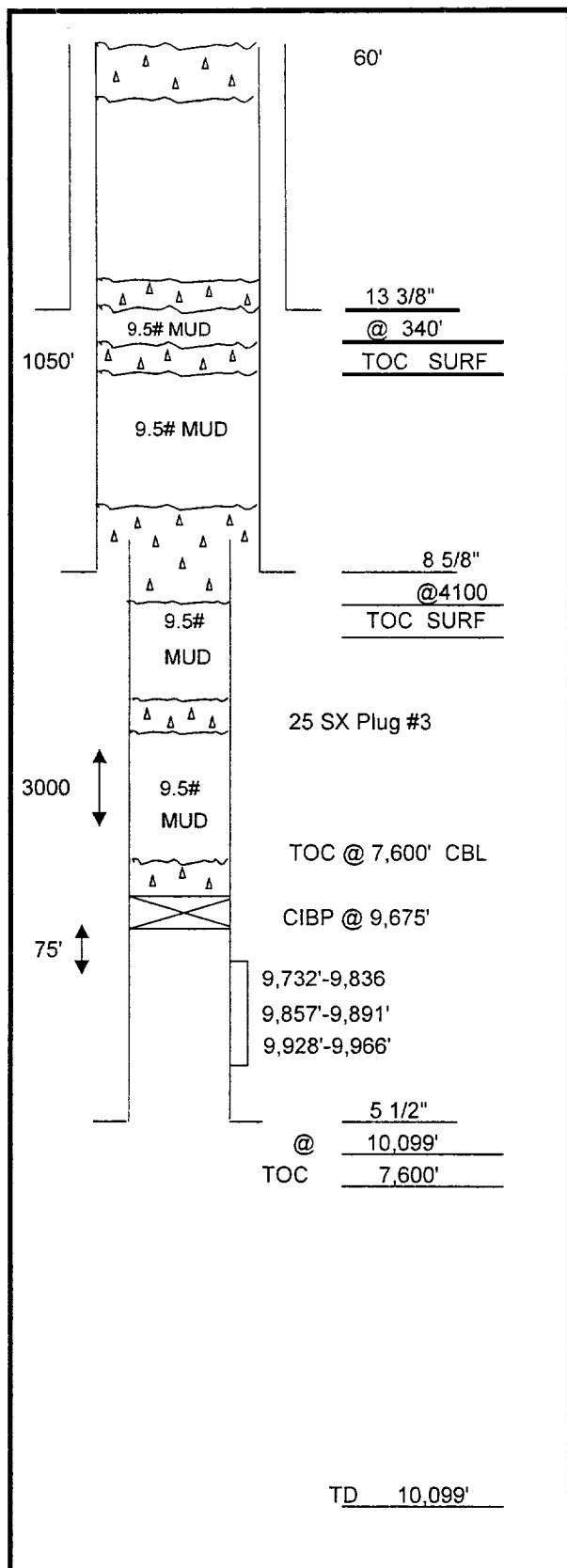
(3 STRING CSNG)

OPERATOR
LEASE NAME

Louis Dreyfus Natural Gas Corp
State of NM 'T' 3

SECT 4 TWN 14S
FROM 660' F N L 520'
TD: 10,099'
PBSD: 9,967'

WELL # T3
RNG 33E
F W L
@ TD Cisco
@ PBSD



	SIZE	SET @	TOC	TOC DETERMINED BY	
SURFACE	13 3/8"	340'	surf	w/420sxs circ to surf	
INTMED 1	8 5/8"	4,100'	surf	w/1750sxs circ to surf	
INTMED 2					
PROD	5 1/2 "	10,099'	7,600'	CBL	
	SIZE	TOP	BOT	TOC	DETERMINED BY
LINER 1					
LINER 2					
	CUT @ PULL @			TOP - BOTTOM	
INTMED 1	0		PERFS	9732'	9,966'
INTMED 2	0		OPENHOLE		
PROD	5 1/2"	4,080'			

* REQUIRED PLUGS DISTRICT 1

RUSTLER (ANHYD)	1690'	*
YATES	2600'	
QUEEN	3370'	
GRAYBURG		
SAN ANDRES	4025'	
CAPTAIN REEF		*
DELAWARE		
BELL CANYON		
CHERRY CANYON		
BRUSHY CANYON		
BONE SPRING		
GLORIETA		*
BLINEBRY		
TUBB	6927'	
DRINKARD		
ABO	7660'	
WC	9250'	
PENN	9718'	
STRAWN		
ATOKA		
MORROW		
MISS		
DEVONIAN		

PLUG	TYPE PLUG	SACKS CMT	DEPTH
EXAMPLES			
PLUG #1	OH	25 SXS	9850'
PLUG #2	SHOE	50 SXS	8700-8800'
PLUG #3	CIBP/35'		5300'
PLUG #4	CIBP	25 SXS	5300'
PLUG #5	STUB	50 SXS	4600-4700'
PLUG #6	RETNR SQZ	200 SXS	400
PLUG #7	SURF	10 SXS	0-10'
PLUG #1	CIBP	-	9675'
PLUG #2	ON CIBP	35'	9640'-9675'
PLUG #3	csg	25 sxs	6640'
PLUG #4	stub	100'	4050-4150'
PLUG #5	csg	25 sxs	1050'
PLUG #6	SHOE	100'	290-390'
PLUG #7	surf	60'	60'
PLUG #8			
PLUG #9			
PLUG #10			
PLUG #			
PLUG #			