

NO. OF COPIES RECEIVED	
DISTRIBUTION	
SANTA FE	
FILE	
U.S.G.S.	
LAND OFFICE	
OPERATOR	

NEW MEXICO OIL CONSERVATION COMMISSION

Form C-101
Revised 1-1-85

5A. Indicate Type of Lease	STATE <input checked="" type="checkbox"/> FEE <input type="checkbox"/>
5. State Oil & Gas Lease No.	LG-2670

APPLICATION FOR PERMIT TO DRILL, DEEPEN, OR PLUG BACK

1a. Type of Work		7. Unit Agreement Name	
b. Type of Well OIL WELL <input checked="" type="checkbox"/> GAS WELL <input type="checkbox"/> OTHER <input type="checkbox"/>		8. Farm or Lease Name Dove "VK" State	
2. Name of Operator Yates Petroleum Corporation		9. Well No. 3	
3. Address of Operator 207 S. 4th, Artesia, New Mexico 88210		10. Field and Pool, or Wildcat Unders. Lazy J Penn	
4. Location of Well UNIT LETTER M LOCATED 660 FEET FROM THE South LINE AND 660 FEET FROM THE West LINE OF SEC. 3 TWP. 14S RGE. 33E NMPM		11. County Lea	
18. Proposed Depth 10,250'		19A. Formation Permo-Penn	
21A. Kind & Status Plug. Bond Blanket		23. Rotary or C.T. Rotary	
21B. Drilling Contractor Ard #7		22. Approx. Date Work will start ASAP	
21. Elevations (Show whether DF, RT, etc.) 4228.1' GL			

PROPOSED CASING AND CEMENT PROGRAM

SIZE OF HOLE	SIZE OF CASING	WEIGHT PER FOOT	SETTING DEPTH	SACKS OF CEMENT	EST. TOP
17 1/2"	13 3/8"	48# J-55	450'	400 SX	circulated
12 1/4"	8 5/8"	24# J-55	4200'	1300 SX	400'
7 7/8"	5 1/2"	17# N-80-L	TD	450 SX	9200'
		17# N-55-L			
		17# N-55-S			
		17# N-80-L			

We propose to drill a 10,250' well and test the Permo-Penn and intermediate formations. Approximately 450' of surface casing will be set and cement circulated and approximately 4200' of intermediate will be set and cement circulated back to about 400'. Production casing will be set to TD and cemented back to approximately 9200'.

MUD PROGRAM: FW gel to 450', Native mud 4200', water/paper to 7500', starch/drispak/KCL to TD.

BOP PROGRAM: BOP's will be installed at the offset and tested daily.

IN ABOVE SPACE DESCRIBE PROPOSED PROGRAM: IF PROPOSAL IS TO DEEPEN OR PLUG BACK, GIVE DATA ON PRESENT PRODUCTIVE ZONE AND PROPOSED NEW PRODUCTIVE ZONE. GIVE BLOWOUT PREVENTER PROGRAM, IF ANY.

I hereby certify that the information above is true and complete to the best of my knowledge and belief.

Signed [Signature] Title Regulatory Agent Date 2/4/83

(This space for State Use)

ORIGINAL SIGNED BY JERRY SEXTON

APPROVED BY DISTRICT I SUPERVISOR

TITLE

DATE

FEB 8 1983

CONDITIONS OF APPROVAL, IF ANY:

APPROVAL VALID FOR 180 DAYS
PERMIT EXPIRES 8/8/83
UNLESS DRILLING UNDERWAY

RECEIVED
FEB 8 1983
O.C.D.
HOBBS OFFICE

**NEW MEXICO OIL CONSERVATION COMMISSION
WELL LOCATION AND ACREAGE DEDICATION PLAT**

Form C-102
Supersedes C-128
Effective 1-1-65

All distances must be from the outer boundaries of the Section.

Operator YATES PETROLEUM CORPORATION			Lease Dove "VK" State		Well No. 3
Unit Letter M	Section 3	Township 14 South	Range 33 East	County Lea	

Actual Footage Location of Well:

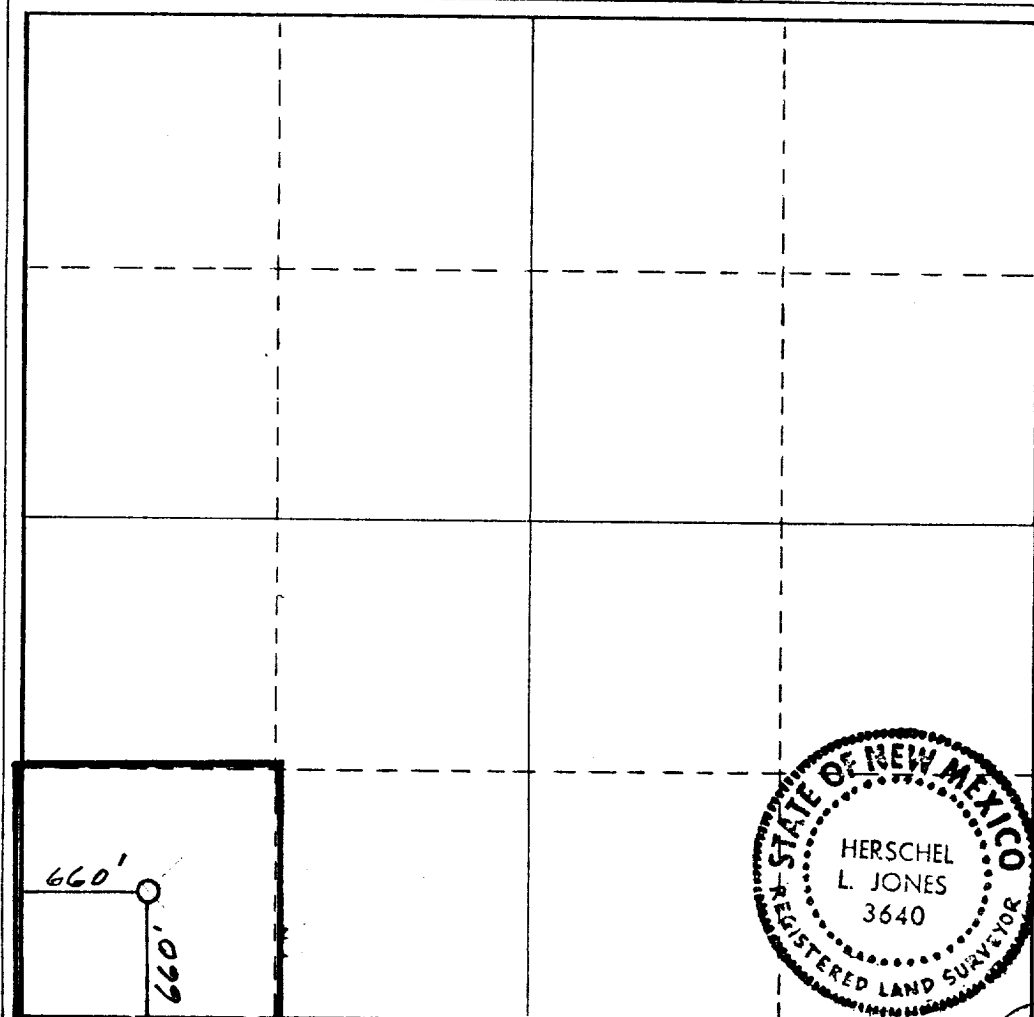
660 feet from the South line and 660 feet from the West line	
Ground Level Elev. 4228.1' GL	Producing Formation Permo-Penn
Pool Undes. Lazy J Penn	
Dedicated Acreage: 40 Acres	

1. Outline the acreage dedicated to the subject well by colored pencil or hachure marks on the plat below.
2. If more than one lease is dedicated to the well, outline each and identify the ownership thereof (both as to working interest and royalty).
3. If more than one lease of different ownership is dedicated to the well, have the interests of all owners been consolidated by communitization, unitization, force-pooling, etc.?

☐ Yes ☐ No If answer is "yes," type of consolidation _____

If answer is "no," list the owners and tract descriptions which have actually been consolidated. (Use reverse side of this form if necessary.) _____

No allowable will be assigned to the well until all interests have been consolidated (by communitization, unitization, forced-pooling, or otherwise) or until a non-standard unit, eliminating such interests, has been approved by the Commission.



CERTIFICATION

I hereby certify that the information contained herein is true and complete to the best of my knowledge and belief.

[Signature]
Name

Gliserio Rodriguez

Position

Regulatory Agent

Company

Yates Petroleum Corp.

Date

2/4/83

I hereby certify that the well location shown on this plat was plotted from field notes of actual surveys made by me or under my supervision, and that the same is true and correct to the best of my knowledge and belief.

Date Surveyed

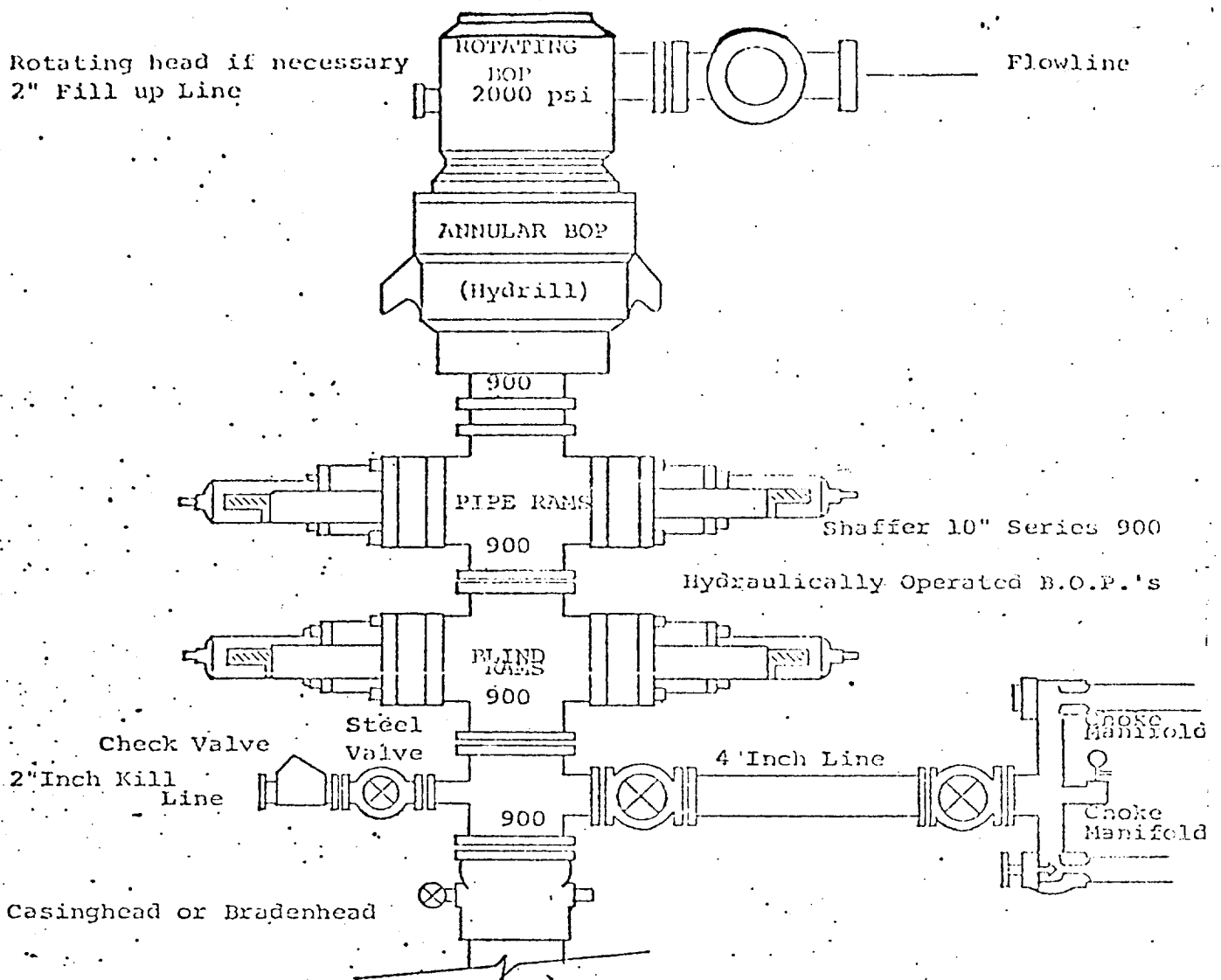
February 3, 1983

Registered Professional Engineer and/or Land Surveyor

[Signature]
Certificate No.
3640

0 330 660 990 1320 1650 1980 2310 2640 2000 1800 1000 500 0

RECEIVED
FEB 8 1983
O.C.D.
HOBBS OFFICE



THE FOLLOWING CONSTITUTE MINIMUM BLOWOUT PREVENTER REQUIREMENTS

1. All preventers to be hydraulically operated with secondary manual controls installed prior to drilling out from under casing.
2. Choke outlet to be a minimum of 4" diameter.
3. Kill line to be of all steel construction of 2" minimum diameter.
4. All connections from operating manifolds to preventers to be all steel. hole or tube a minimum of one inch in diameter.
5. The available closing pressure shall be at least 15% in excess of that required with sufficient volume to operate the B.O.P.'s.
6. All connections to and from preventer to have a pressure rating equivalent to that of the B.O.P.'s.
7. Inside blowout preventer to be available on rig floor.
8. Operating controls located a safe distance from the rig floor.
9. Hole must be kept filled on trips below intermediate casing. Operator not responsible for blowouts resulting from not keeping hole full.
10. D. P. float must be installed and used below zone of first gas intrusion.

RECEIVED
FEB 8 1983
O.C.D.
MOBES OFFICE

473