

NO. OF COPIES RECEIVED	
DISTRIBUTION	
SANTA FE	
FILE	
U.S.G.S.	
LAND OFFICE	
OPERATOR	

5A. Indicate Type of Lease
STATE <input checked="" type="checkbox"/> FEE <input type="checkbox"/>
5. State Oil & Gas Lease No.
LC-814

## APPLICATION FOR PERMIT TO DRILL, DEEPEN, OR PLUG BACK

a. Type of Work

DRILL ☒DEEPEN ☐PLUG BACK ☐

b. Type of Well

OIL WELL ☒GAS WELL ☐

OTHER

SINGLE ZONE ☐MULTIPLE ZONE ☐

7. Unit Agreement Name

8. Farm or Lease Name

Woodpecker "SY" St.

9. Well No.

6

10. Field and Pool, or Wildcat

Undes.  
Saunders Permo Upper Penn

1. Name of Operator

Yates Petroleum Corporation

2. Address of Operator

207 S. 4th, Artesia, New Mexico 88210

3. Location of Well

UNIT LETTER F LOCATED 1980 FEET FROM THE North LINE

AND 1980 FEET FROM THE West LINE OF SEC. 21 TWP. 14S RGE. 33E NMPM

17. County

Lea

4. Elevations (show whether DF, KT, etc.)

4255.7' GL

21A. Kind &amp; Status Plug. Bond

Blanket

19. Proposed Depth

10,500'

19A. Formation

Permo Penn

20. Rotary or C.T.

Rotary

21B. Drilling Contractor

Ard #7

22. Approx. Date Work will start

ASAP

3.

## PROPOSED CASING AND CEMENT PROGRAM

SIZE OF HOLE	SIZE OF CASING	WEIGHT PER FOOT	SETTING DEPTH	SACKS OF CEMENT	EST. TOP
17 1/2"	13 3/8"	48# J-55	450'	400 sx	circulated
12 1/4"	8 5/8"	24# J-55	4200'	1300 sx	400'
7 7/8"	5 1/2"	17# N-80-L	TD	450 sx	9200'
		17# K-55-L			
		17# K-55-S			
		17# N-80-L			

We propose to drill a 10,150' well and test the Permo-Penn and intermediate formations. Approximately 450' of surface casing will be set and cement circulated and approximately 4200' of intermediate will be set and cement circulated back to about 400'. Production casing will be set to TD and cemented back to approximately 9200'.

MUD PROGRAM: FW gel to 450', native mud 4200'; water & paper to 7500', starch/driskpak/KCL to TD.

BOP PROGRAM: BOP's will be installed at the offset and tested daily.

ABOVE SPACE DESCRIBE PROPOSED PROGRAM; IF PROPOSAL IS TO DEEPEN OR PLUG BACK, GIVE DATA ON PRESENT PRODUCTIVE ZONE AND PROPOSED NEW PRODUCTIVE ZONE. GIVE BLOWOUT PREVENTER PROGRAM, IF ANY.

I hereby certify that the information above is true and complete to the best of my knowledge and belief.

Signed Jerry Sexton Title Regulatory Agent

Date 3/4/83

(This space for State Use)

ORIGINAL SIGNED BY JERRY SEXTON

APPROVED BY DISTRICT 1 SUPERVISOR TITLE

DATE

MAR 4 1983

CONDITIONS OF APPROVAL, IF ANY:

APPROVAL VALID FOR 180 DAYS  
PERMIT EXPIRES 9/4/83  
UNLESS DRILLING UNDERWAY

**NEW MEXICO OIL CONSERVATION COMMISSION  
WELL LOCATION AND ACREAGE DEDICATION PLAT**

Form C-102  
Supersedes C-128  
Effective 1-1-65

All distances must be from the outer boundaries of the Section.

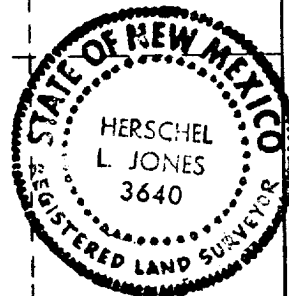
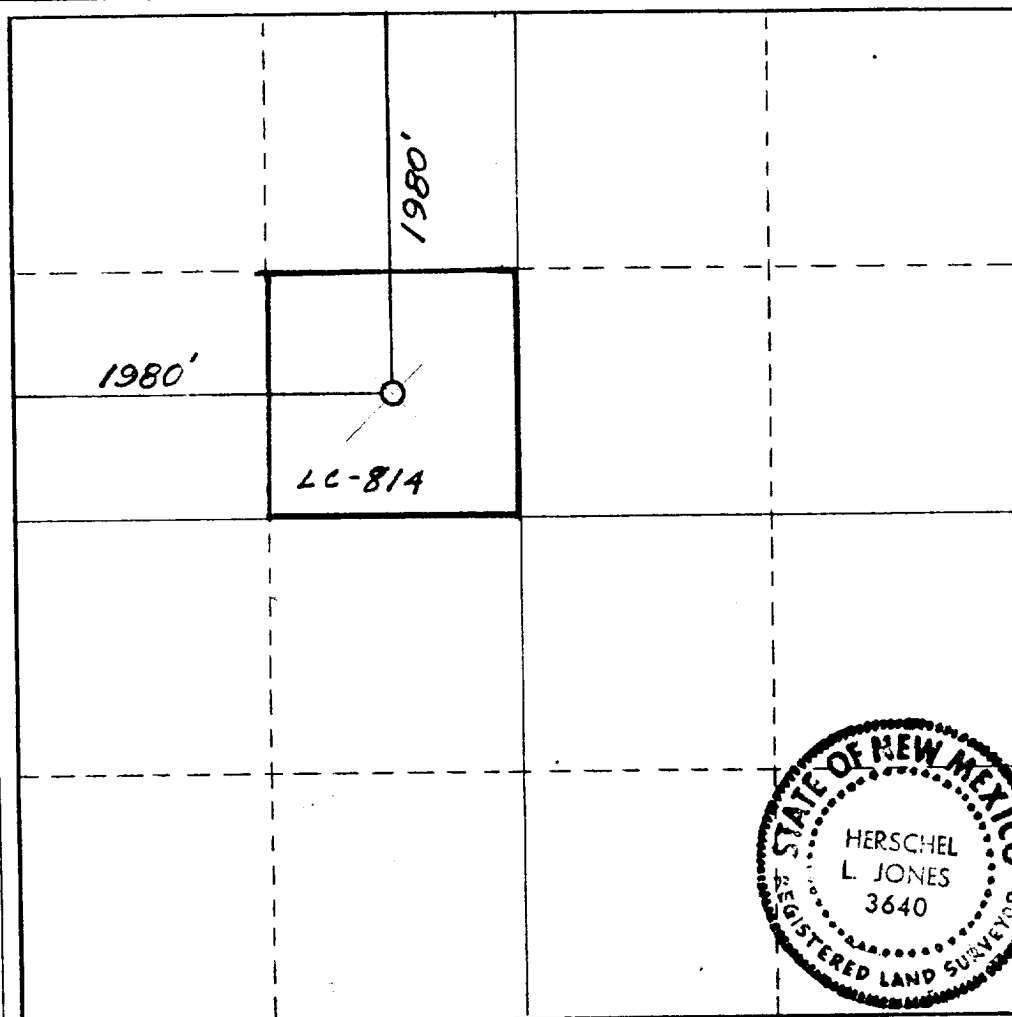
Operator <b>YATES PETROLEUM CORPORATION</b>			Lease <b>Woodpecker "SY" State</b>		Well No. <b>6</b>
Unit Letter <b>F</b>	Section <b>21</b>	Township <b>14 South</b>	Range <b>33 East</b>	County <b>Lea</b>	
Actual Footage Location of Well: <b>1980</b> feet from the <b>North</b> line and <b>1980</b> feet from the <b>West</b> line					
Ground Level Elev. <b>4255.7' GL</b>	Producing Formation <b>Permo Penn</b>	Pool <b>Undes. Saunders Permo Upper Penn</b>		Dedicated Acreage: <b>40</b> Acres	

1. Outline the acreage dedicated to the subject well by colored pencil or hachure marks on the plat below.
2. If more than one lease is dedicated to the well, outline each and identify the ownership thereof (both as to working interest and royalty).
3. If more than one lease of different ownership is dedicated to the well, have the interests of all owners been consolidated by communitization, unitization, force-pooling, etc?

☐ Yes    ☐ No    If answer is "yes," type of consolidation \_\_\_\_\_

If answer is "no," list the owners and tract descriptions which have actually been consolidated. (Use reverse side of this form if necessary.) \_\_\_\_\_

No allowable will be assigned to the well until all interests have been consolidated (by communitization, unitization, forced-pooling, or otherwise) or until a non-standard unit, eliminating such interests, has been approved by the Commission.



**CERTIFICATION**

I hereby certify that the information contained herein is true and complete to the best of my knowledge and belief.

*Gliserio Rodriguez*  
Name

Gliserio Rodriguez

Position

Regulatory Agent

Company

Yates Petroleum Corp.

Date

3/4/83

I hereby certify that the well location shown on this plat was plotted from field notes of actual surveys made by me or under my supervision, and that the same is true and correct to the best of my knowledge and belief.

Date Surveyed

March 3, 1983

Registered Professional Engineer  
and/or Land Surveyor

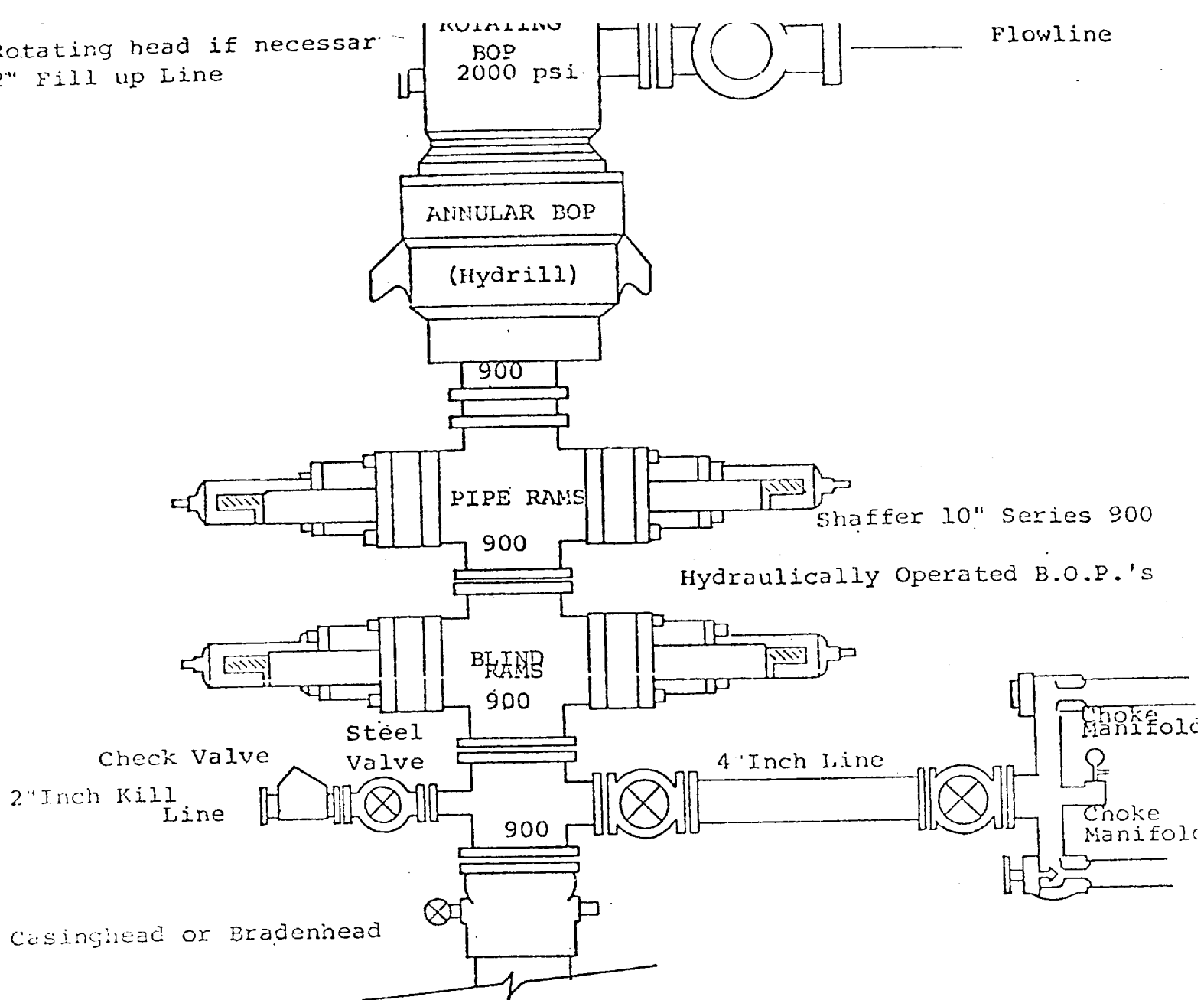
*Herschel L. Jones*  
Certificate No.

3640

0 330 660 990 1320 1650 1980 2310 2640 2970 3300 3600 0

RECEIVED  
MAR 4 1983  
O.C.D.  
HOBBS OFFICE

Rotating head if necessary  
2" Fill up Line



THE FOLLOWING CONSTITUTE MINIMUM BLOWOUT PREVENTER REQUIREMENTS

1. All preventers to be hydraulically operated with secondary manual control installed prior to drilling out from under casing.
2. Choke outlet to be a minimum of 4" diameter.
3. Kill line to be of all steel construction of 2" minimum diameter.
4. All connections from operating manifolds to preventers to be all steel. hole or tube a minimum of one inch in diameter.
5. The available closing pressure shall be at least 15% in excess of that required with sufficient volume to operate the B.O.P.'s.
6. All connections to and from preventer to have a pressure rating equivalent to that of the B.O.P.'s.
7. Inside blowout preventer to be available on rig floor.
8. Operating controls located a safe distance from the rig floor.
9. Hole must be kept filled on trips below intermediate casing.
10. D. P. float must be installed and used below zone of first gas intrusion

RECEIVED  
MAR 4 1983  
O.C.D.  
HOBBY OFFICE

