

NO. OF COPIES RECEIVED	
DISTRIBUTION	
SANTA FE	
FILE	
U.S.G.S.	
LAND OFFICE	
OPERATOR	

NEW MEXICO OIL CONSERVATION COMMISSION

30-025-28236

Form C-101
Revised 1-1-65

APPROVAL VALID FOR 180 DAYS
PERMIT EXPIRES 12/3/83
UNLESS DRILLING UNDERWAY

5A. Indicate Type of Lease
STATE <input checked="" type="checkbox"/> FEE <input type="checkbox"/>
5. State Oil & Gas Lease No.
B-9385

APPLICATION FOR PERMIT TO DRILL, DEEPEN, OR PLUG BACK

1a. Type of Work		7. Unit Agreement Name	
b. Type of Well DRILL <input checked="" type="checkbox"/> DEEPEN <input type="checkbox"/> PLUG BACK <input type="checkbox"/> OIL WELL <input checked="" type="checkbox"/> GAS WELL <input type="checkbox"/> OTHER <input type="checkbox"/> SINGLE ZONE <input checked="" type="checkbox"/> MULTIPLE ZONE <input type="checkbox"/>		8. Firm or Lease Name	
2. Name of Operator		9. Well No.	
Texaco Inc.		11	
3. Address of Operator		10. Field and Pool, or Wildcat	
P. O. Box 3109, Midland, Texas 79702		Saunders Penn Permo Upper	
4. Location of Well		12. County	
UNIT LETTER <u>D</u> LOCATED <u>660</u> FEET FROM THE <u>North</u> LINE AND <u>660</u> FEET FROM THE <u>West</u> LINE OF SEC. <u>22</u> TWP. <u>14-S</u> RSE. <u>33-E</u> NNPM		Lea	
11. Proposed Depth		19. Operator	
10,100'		Permo Upper Penn	
20. Rotary or C.T.		Rotary	
21. Elevations (Show whether DE, RT, etc.)		22. Approx. Date Work will start	
4205' Gr		Immediately	

23. PROPOSED CASING AND CEMENT PROGRAM

SIZE OF HOLE	SIZE OF CASING	WEIGHT PER FOOT	SETTING DEPTH	SACKS OF CEMENT	EST. TOP
17 1/2"	13 3/8"	48#, H-40	500'	600	Circulate
12 1/4"	8 5/8"	24#, K-55	4190'	2000	Circulate
		24#, S-80			
		28#, S-80			
7 7/8"	5 1/2"	17#, N-80	10,100'	1850	Circulate
		17#, K-55			

Surface Casing: 600 sxs Class "H" w/2% CaCl₂ (15.6 ppg, 1.18 ft³/sx).

Intermediate Casing: 1800 sxs HLW w/15# salt, 5# gilsonite & 1/4# flocele/sx (13.0 ppg, 2.00 ft³/sx) followed by 200 sxs Class "H" w/1/4# flocele/sx (15.6 ppg, 1.18 ft³/sx).

Production Casing: 1st Stage: 700 sxs HLW w/10# gilsonite, 1/4# flocele & 0.6% HALAD-9/sx (12.4 ppg, 1.99 ft³/sx) followed by 200 sxs 50:50 Pozmix Class "H" w/2% gel, 6# gilsonite, 1/4# flocele & 0.8% HALAD-9/sx (13.6 ppg, 1.40 ft³/sx). DV Tool at 7000'. 2nd Stage: 750 sxs HLW w/10# gilsonite, 1/4# flocele & 0.2% HR-4/sx (12.4 ppg, 1.99 ft³/sx) followed by 200 sxs 50:50 Pozmix Class "H" w/2% gel, 6# gilsonite, 1/4# flocele & 0.2% HR-4/sx (13.6 ppg, 1.40 ft³/sx).

IN ABOVE SPACE DESCRIBE PROPOSED PROGRAM: IF PROPOSAL IS TO DEEPEN OR PLUG BACK, LIST DATA ON PRESENT PRODUCTIVE ZONE AND PROPOSED NEW PRODUCTIVE ZONE. GIVE BLOWOUT PREVENTER PROGRAM, IF ANY.

I hereby certify that the information above is true and complete to the best of my knowledge and belief.

Signed R. S. Lane Title Assistant Petr. Engr. Manager Date May 27, 1983

(This space for State Use)

ORIGINAL SIGNED BY JERRY SEXTON

APPROVED BY DISTRICT I SUPERVISOR TITLE DATE

CONDITIONS OF APPROVAL, IF ANY:

JUN 3 1983

**NE MEXICO OIL CONSERVATION COMMISSION
WELL LOCATION AND ACREAGE DEDICATION PLAT**

Form C-102
Supersedes C-128
Effective 1-1-65

All distances must be from the outer boundaries of the Section.

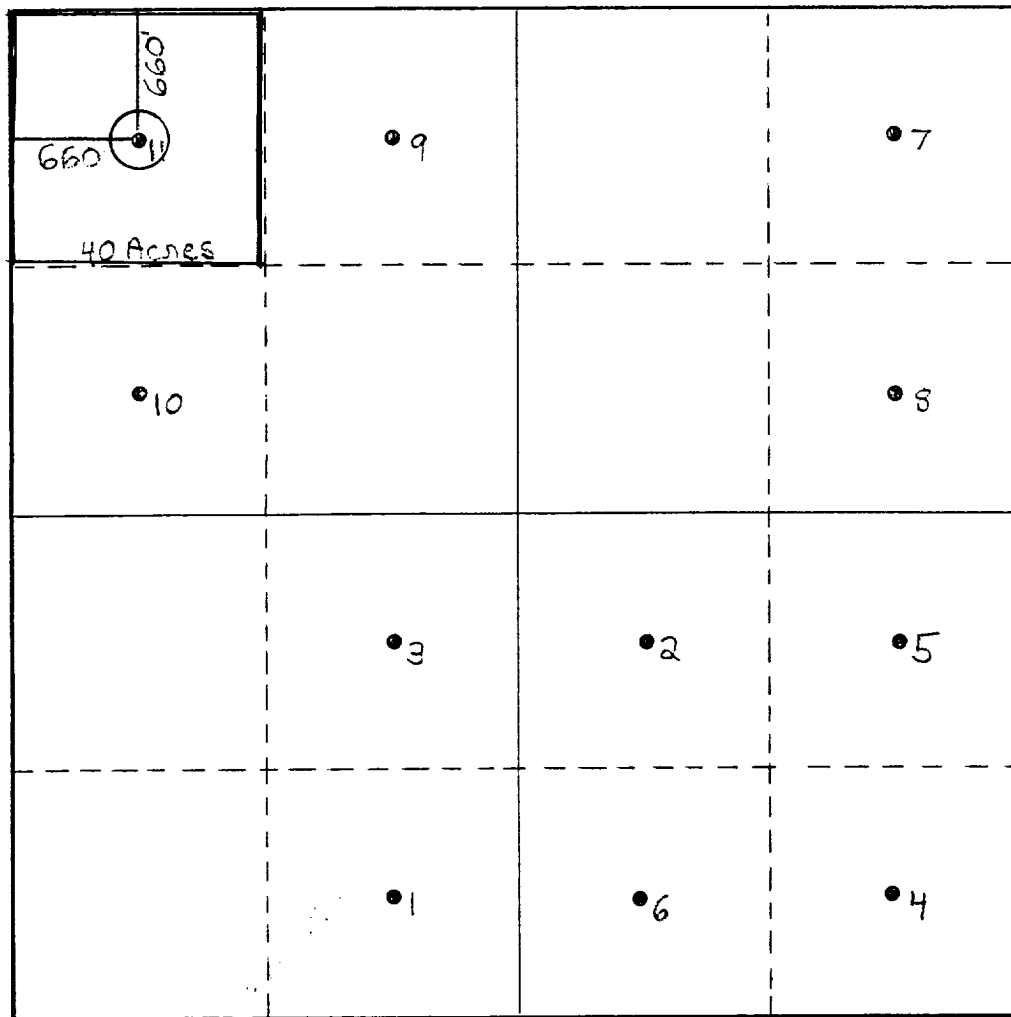
Operator Texaco Inc.		Lease New Mexico "AN" State		Well No. 11
Unit Letter D	Section 22	Township 14-S	Range 33-E	County Lea
Actual Footage Location of Well: 660 feet from the North line and 660 feet from the West line				
Ground Level Elev. 4205'	Producing Formation Permo Upper Penn	Pool Saunders Permo Upper Penn	Dedicated Acreage: 40 Acres	

1. Outline the acreage dedicated to the subject well by colored pencil or hachure marks on the plat below.
2. If more than one lease is dedicated to the well, outline each and identify the ownership thereof (both as to working interest and royalty).
3. If more than one lease of different ownership is dedicated to the well, have the interests of all owners been consolidated by communitization, unitization, force-pooling, etc?

☐ Yes ☐ No If answer is "yes," type of consolidation _____

If answer is "no," list the owners and tract descriptions which have actually been consolidated. (Use reverse side of this form if necessary.) _____

No allowable will be assigned to the well until all interests have been consolidated (by communitization, unitization, forced-pooling, or otherwise) or until a non-standard unit, eliminating such interests, has been approved by the Commission.



CERTIFICATION

I hereby certify that the information contained herein is true and complete to the best of my knowledge and belief.

B. L. Eiland

Name
B. L. Eiland

Position
Division Surveyor

Company
Texaco Inc.

Date
May 27, 1983

I hereby certify that the well location shown on this plat was plotted from field notes of actual surveys made by me or under my supervision, and that the same is true and correct to the best of my knowledge and belief.

Date Surveyed
May 27, 1983

Registered Professional Engineer and/or Land Surveyor

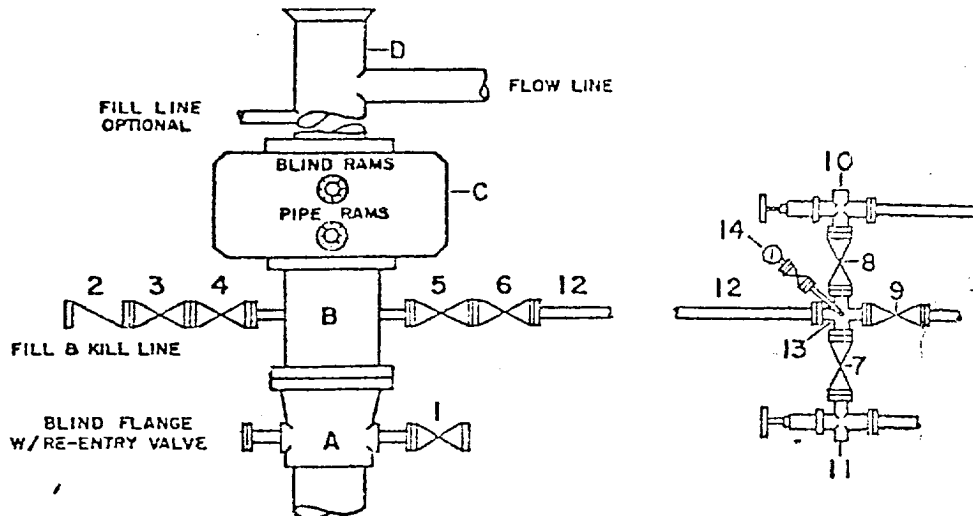
B. L. Eiland
B. L. Eiland

Certificate No.
4386



DRILLING CONTROL CONDITION II-3000 PSI WP

H₂S TRIM REQUIRED
YES _____ NO _____



DRILLING CONTROL

MATERIAL LIST - CONDITION II

- A Texaco Wellhead
- B 3000# W.P. drilling spool with a 2" minimum flanged outlet for kill-line and 3" minimum flanged outlet for choke line
- C 3000# W.P. Dual ram type preventer, hydraulic operated with 1" steel, 3000# W.P. control lines (where sub-structure height is adequate, 2-3000# W.P. single ram type preventers may be utilized.)
- D Bell nipple with flowline and fill-up outlets. (Kill line may also be used for fill-up line.)
- 1,3,4, 7,8 2" minimum 3000# W.P. flanged full opening steel gate valve, or Halliburton Lo Torc Plug valve.
- 2 2" minimum 3000# W.P. back pressure valve
- 5,6,9 3" minimum 3000# W.P. flanged full opening steel gate valve, or Halliburton Lo Torc Plug valve.
- 12 3" minimum schedule 80, Grade "B", seamless line pipe
- 13 2" minimum x 3" minimum 3000# W.P. flanged cross
- 10, 11 2" minimum 3000# W.P. adjustable choke bodies
- 14 Cameron Mud Gauge or equivalent (location optional in choke line.)



TEXACO, INC.
PRODUCING DEPARTMENT U S
MIDLAND, TEXAS



SCALE	DATE	EST NO	DRG NO
DRAWN BY			
CHECKED BY			
APPROVED BY			

EXHIBIT B

RECEIVED
JUN 2 1983
O.C.D.
HOBBS OFFICE

177