

OIL CONSERVATION DIVISION

P. O. BOX 2088

Form C-102
Revised 10-1-78STATE OF NEW MEXICO
ENERGY AND MINERALS DEPARTMENT

SANTA FE, NEW MEXICO 87501

All distances must be from the outer boundaries of the Section.

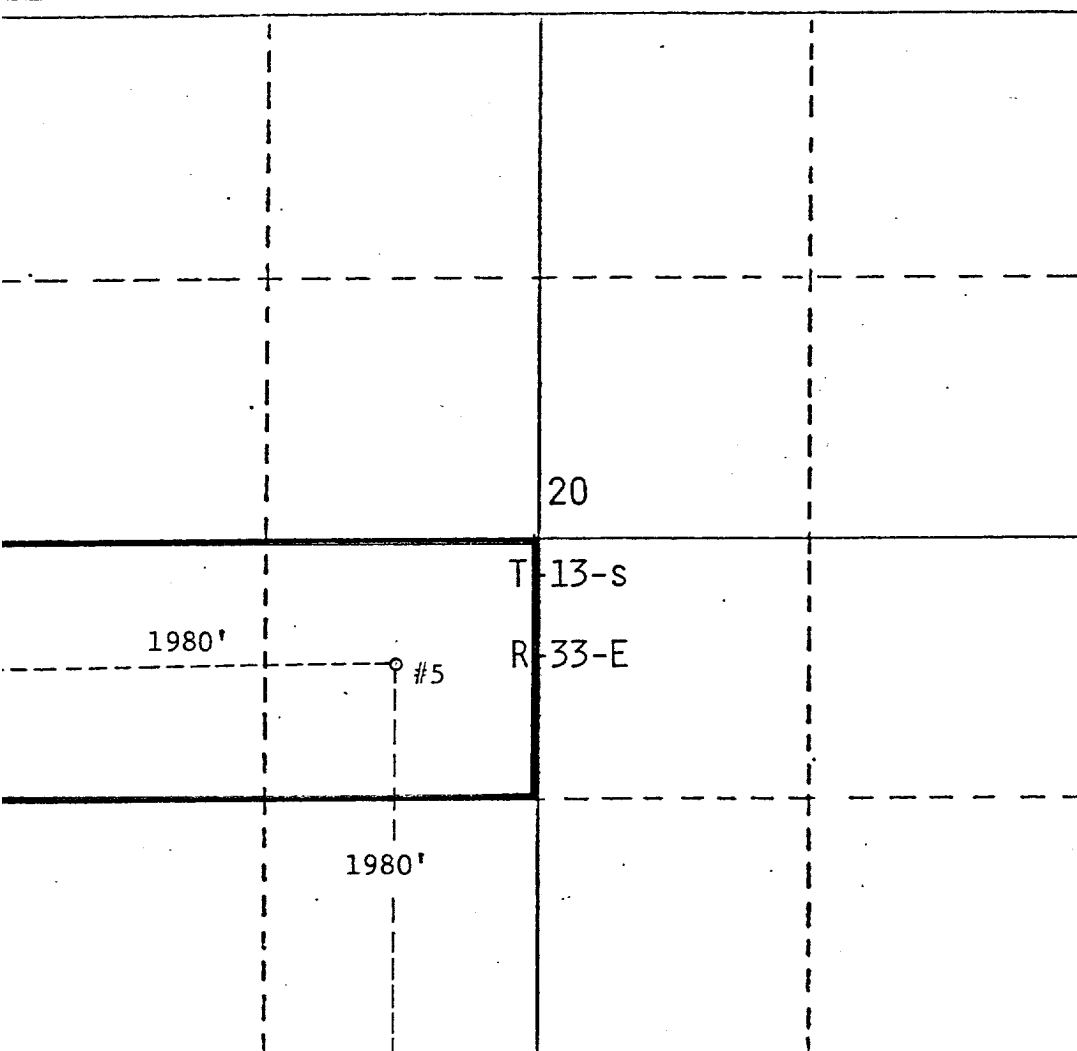
Operator COASTAL OIL & GAS CORP.		Lease FEDERAL "20"		Well No. #5
Unit Letter K	Section 20	Township 13 SOUTH	Range 33 EAST	County LEA
Actual Footage Location of Well: 1980' feet from the SOUTH line and 1980' feet from the WEST line				
Ground Level Elev. 4269'	Producing Formation Bough "B", Bough "C"	Pool Upper Penn.	Dedicated Acreage: 80 Acres	

1. Outline the acreage dedicated to the subject well by colored pencil or hatchure marks on the plat below.
2. If more than one lease is dedicated to the well, outline each and identify the ownership thereof (both as to working interest and royalty).
3. If more than one lease of different ownership is dedicated to the well, have the interests of all owners been consolidated by communitization, unitization, force-pooling, etc?

☐ Yes ☐ No If answer is "yes," type of consolidation _____

If answer is "no," list the owners and tract descriptions which have actually been consolidated. (Use reverse side of this form if necessary.) _____

No allowable will be assigned to the well until all interests have been consolidated (by communitization, unitization, forced-pooling, or otherwise) or until a non-standard unit, eliminating such interests, has been approved by the Division.



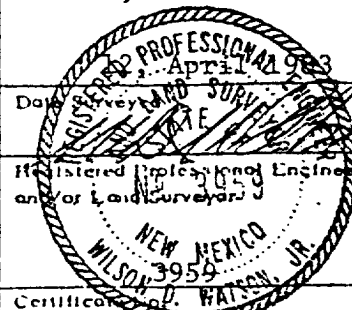
CERTIFICATION

I hereby certify that the information contained herein is true and complete to the best of my knowledge and belief.

Name **Tom C. Young**Position **Drilling Manager**Company **Coastal Oil & Gas Corporation**Date **5-5-83**

Date

I hereby certify that the well location shown on this plat was plotted from field notes of actual surveys made by me or under my supervision, and that the same is true and correct to the best of my knowledge and belief.



Certificate